

# Idaho State Police

## A Report to Our Citizens



Fiscal Year 2018: July 1, 2017–June 30, 2018



Service since 1939

## Agency Overview

Idaho State Police (ISP) fulfills its mission with the variety of services entrusted to our agency. Our primary programs consist of Patrol, Investigations, Alcohol Beverage Control (provides licensing, education, and enforcement services for over 5,000 liquor licenses), Police Services (Forensics, Criminal Justice Information Systems, Bureau of Criminal Identification), Management Services, Brands, Racing, and Peace Officer Standards and Training (POST), all divisions within ISP.

Additionally, ISP maintains the state's criminal history records, the statewide Public Safety and Security Information System, and backup data for other agencies.

The Director of ISP, Colonel Kedrick R. Wills, appointed by the Governor and confirmed by the Senate, oversees the operations throughout the state from the headquarters complex located in Meridian, which includes a forensics laboratory and the facilities for the Peace Officer Standards and Training Academy.

**Our Mission**  
Providing public safety across the State of Idaho through law enforcement excellence



### Strategic Objectives

Excellence in Law Enforcement Services

Effective and Efficient Agency Operation

Collaboration and Partnerships

Workforce Development

American Association of State Troopers  
Top Ten Winner - ISP Calendar Photo



[Visit our Website @www.isp.idaho.gov](http://www.isp.idaho.gov)

### INSIDE THIS REPORT

Agency Overview..... 1

Goals & Progress.....2

Revenues & Expenditures.....3

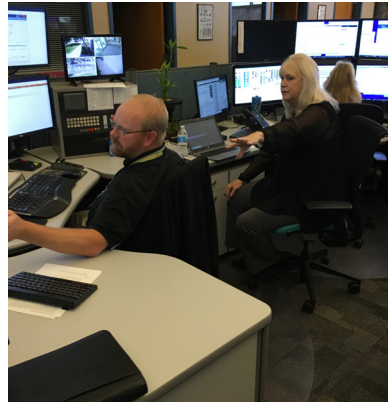
Planning for the future.....4

# GOALS & PROGRESS



## Customer-Focused Performance Measures

Fiscal Year Ending June 30	FY15	FY16	FY17	FY18
Regional Communications Centers				
North and South calls for Patrol Services	222,914	230,915	220,572	229,672
Requests from other law enforcement agencies for Patrol Services	5,820	5,685	5,778	5,950
Investigations self-initiated cases	80%	80%	76%	74%
Cases from other law enforcement agencies	20%	20%	24%	26%
Forensics laboratory cases submitted	9,456	10,524	11,220	12,280
Complaints of trooper conduct rising to the level of Office of Professional Standards (OPS) investigations	3.40%	3.70%	2.30%	2.10%
Annual number of Peace Officer Standards and Training Academies	20	18	18	18



Idaho State Police Troopers who patrol our state are now equipped with and trained on electroshock weapons, or Tasers, as of early 2018.

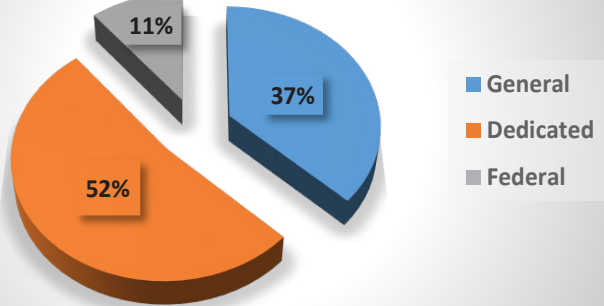
It is generally a less-than-lethal alternative to deadly force weapons and has been shown to enhance the effectiveness of restraint while minimizing harm, which is considered to be a superior alternative in many cases.

In August, ISP Regional Communications Centers welcomed a new communications era with an upgraded 911 system installation. Motorola installed equipment and trained our dispatchers on the new system, which will soon allow them to automatically locate cell phone callers who dial 911. Previously, when a local 911 call center transferred a call to one of our two communication centers, the caller's location could not be easily discerned, which have led to problems. Now, the data is seamlessly transferred to ISP using technology found in modern cell phones.

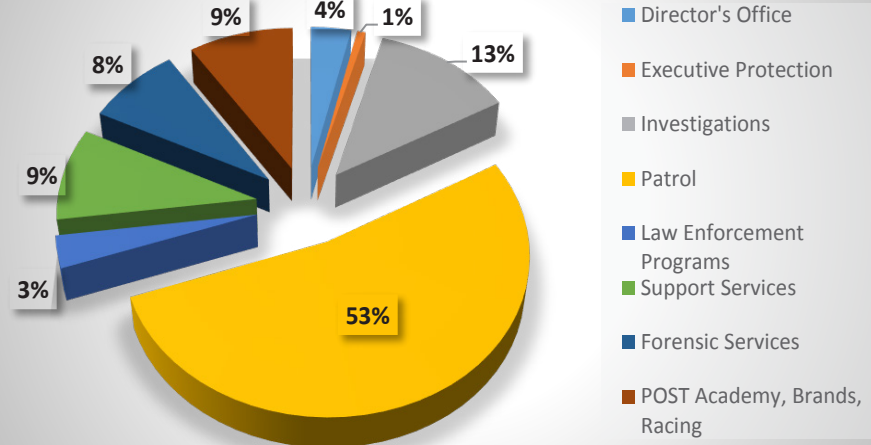
# REVENUES & EXPENDITURES



## Where does the money come from?



## How is the money spent?



	FY16	FY17	FY18	FY18%
<b>Appropriation by Fund</b>				
State General	25,581	27,353	29,162	37.0%
State Dedicated	33,498	38,131	37,353	47.4%
Federal Funds	8,359	8,733	8,523	10.8%
Brands State Dedicated	2,761	3,174	3,090	3.9%
Racing State Dedicated	611	626	650	0.8%
<b>Total Appropriation</b>	<b>\$70,810</b>	<b>\$78,017</b>	<b>\$78,778</b>	<b>100%</b>

	FY16	FY17	FY18	FY18%
<b>Expenditures by Program</b>				
Director's Office	2,484	2,626	2,635	3.6%
Executive Protection	466	571	538	0.7%
Investigations	8,383	9,179	9,226	12.5%
Patrol	33,883	36,054	39,020	52.8%
Law Enforcement Programs	2,051	2,269	2,425	3.3%
Support Services	6,880	7,645	6,987	9.5%
Forensic Services	4,914	6,013	6,178	8.4%
POST Academy	3,842	3,546	3,699	5.0%
Brands	2,520	2,723	2,742	3.7%
Racing	404	279	395	0.5%
<b>Total Expenditures</b>	<b>\$65,827</b>	<b>\$70,905</b>	<b>\$73,845</b>	<b>100%</b>

	FY16	FY17	FY18	FY18%
<b>Expenditures by Type</b>				
Personnel	42,885	46,514	48,593	65.8%
Operating Expense	13,703	14,216	15,738	21.3%
Capital Outlay	4,536	5,117	4,285	5.8%
Trustee/Benefit Payments	1,779	2,056	2,092	2.8%
Brands	2,520	2,723	2,742	3.7%
Racing	404	279	395	0.5%
<b>Total Expenditures</b>	<b>\$65,827</b>	<b>\$70,905</b>	<b>\$73,845</b>	<b>100%</b>

Idaho State Police receives the majority of revenue from dedicated funding sources. These sources include user fees or taxes that are collected to finance a specific service or project. Examples of dedicated funds of ISP are the fuel tax and monies collected from vehicle registration for patrol.

General funds are monies collected from taxes and fees imposed by the state, such as individual and corporate tax.

Federal funds received by ISP include those used directly for our programs, or passed through to other state and local governments for criminal justice activities.



**INTEGRITY  
SERVICE  
PROFESSIONALISM**

# LOOKING TO THE FUTURE



## A message from the desk of Colonel Kedrick R. Wills



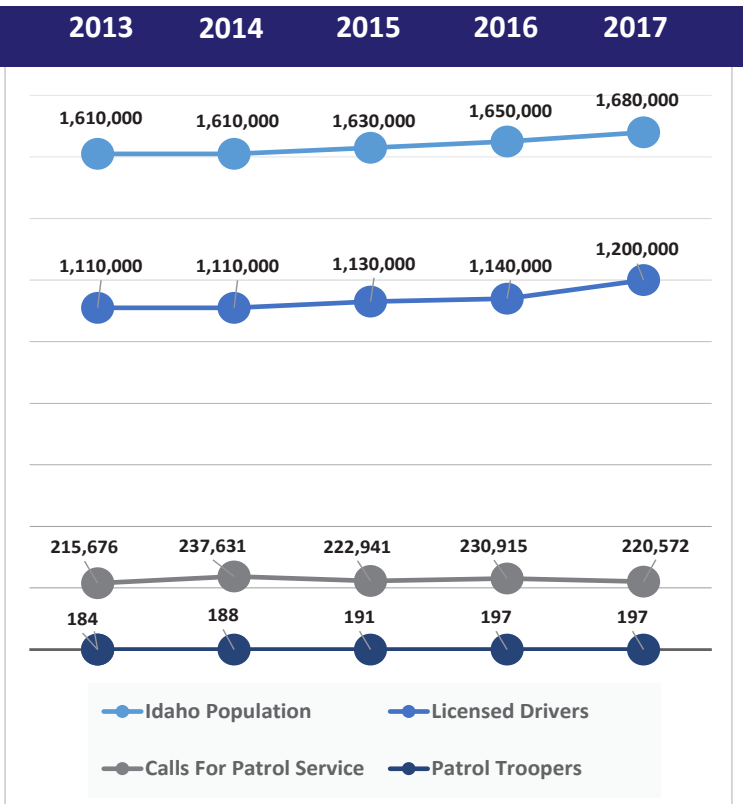
According to the U.S. Census Bureau, Idaho was the nation's fastest-growing state last year, with a population increase of 2.2% from July 2016 to July 2017. We now have some 1.7 million people in the Gem State, and there's no sign of a slowdown.

The Idaho State Police is working to keep up with this growth by increasing our own workforce. Since 2010, we've added additional detectives and patrol troopers to our ranks for a total of 311 commissioned personnel. We're working to keep up in other areas for which we're responsible, for example, with the Brand Inspection Division. With the human population increasing, our brand inspectors are busier than ever because that growth means more food is being produced in our



state and that includes livestock products headed to our dinner tables. Last year, our Brands team inspected over 2 million head of livestock, a task which will soon be made easier with technology. Inspectors will use hand-held computers to identify livestock, record brands, and trace potential carriers of livestock-borne diseases. This will make current processes faster and allow inspectors to quickly access a central repository database, all in the name of increasing efficiency, keeping our livestock safe and keeping up with growth. The anticipated go-live date for this technology is April 5, 2019.

ISP Troopers patrol 4,930 miles of roadways. Idaho Department of Transportation estimates the number of miles driven on State and Federal roadways is 17.15 billion miles in 2017. Idaho population and licensed drivers show a steady increase over the five year span as well. Requests for service from dispatch average 225,000 calls per year for service, which equates to 1,142 calls per Trooper. As the population and driver counts increase, the need to have highly qualified Troopers increases. ISP recruit academy is held once a year, and on occasion will be held twice. We encourage all those looking for a career in law enforcement to consider ISP.



Connect with the Idaho State Police  
@isp.idaho.gov



Subscribe to Idaho State Police in You-tube



Follow us @IdahoSTPolice