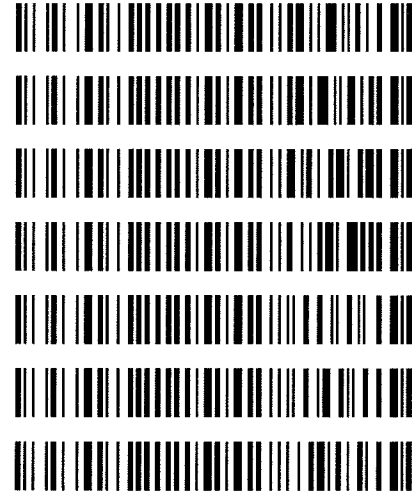




Worklist: 1608

<u>LAB CASE</u>	<u>ITEM</u>	<u>TASK ID</u>	<u>DESCRIPTION</u>
C2017-0444	1	79471	AM 3 Urine Carboxy-THC
C2017-0445	1	79472	AM 3 Urine Carboxy-THC
C2017-0460	1	79473	AM 3 Urine Carboxy-THC
C2017-0463	1	79474	AM 3 Urine Carboxy-THC
C2017-0470	1	79475	AM 3 Urine Carboxy-THC
C2017-0473	1	79478	AM 3 Urine Carboxy-THC
C2017-0486	1	79479	AM 3 Urine Carboxy-THC



Area Percent Report

Data Path : D:\DATA\2017\3-15-17 Gen Drug and c-thc\
 Data File : 02201002.D
 Acq On : 15 Mar 2017 16:25
 Operator : Instrument 65198
 Sample : negative control
 Misc : lot 12517; am 3
 ALS Vial : 22 Sample Multiplier: 1

Integration Parameters: autoint1.e
 Integrator: ChemStation

Method : D:\DATA\2016\852016a ta\psilocyn .D\TOXI-A 10115.M
 Title :

Signal : EIC Ion 371.00 (370.70 to 371.70): 02201002.D\data.ms

peak #	R.T. min	first scan	max scan	last scan	PK TY	peak height	corr. area	corr. % max.	% of total
1	3.812	3	6	15	PH	20536	410724	15.18%	10.816%
2	3.898	15	22	32	VV	193797	2704976	100.00%	71.233%
3	3.981	32	37	46	VV	7908	194081	7.17%	5.111%
4	4.075	46	54	65	VV	7559	226612	8.38%	5.968%
5	4.476	123	129	137	VV	9032	160301	5.93%	4.221%
6	4.629	152	158	165	VV 2	5670	100662	3.72%	2.651%

Sum of corrected areas: 3797355

Signal : EIC Ion 473.00 (472.70 to 473.70): 02201002.D\data.ms

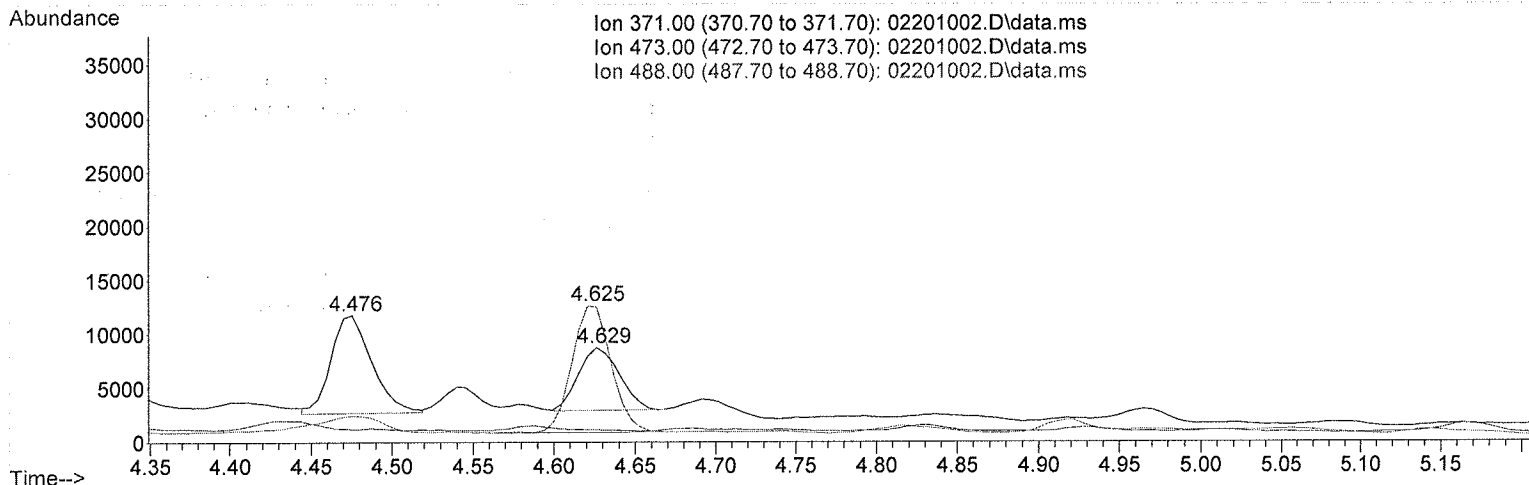
peak #	R.T. min	first scan	max scan	last scan	PK TY	peak height	corr. area	corr. % max.	% of total
No peaks were detected using the method integration parameters!									

No peaks were detected using the method integration parameters!
 Signal : EIC Ion 488.00 (487.70 to 488.70): 02201002.D\data.ms

peak #	R.T. min	first scan	max scan	last scan	PK TY	peak height	corr. area	corr. % max.	% of total
1	4.625	145	157	166	PB 2	11754	195360	100.00%	100.000%

Sum of corrected areas: 195360

TOXI-A 10115.M Wed Mar 15 22:38:55 2017



[Handwritten signature]

Area Percent Report

Data Path : D:\DATA\2017\3-15-17 Gen Drug and c-thc\
 Data File : 02101003.D
 Acq On : 15 Mar 2017 16:35
 Operator : Instrument 65198
 Sample : positive control
 Misc : FE03121501 in neg lot 31517; am 3
 ALS Vial : 21 Sample Multiplier: 1

Integration Parameters: autoint1.e
 Integrator: ChemStation

Method : D:\DATA\2016\852016a ta\psilocyn .D\TOXI-A 10115.M
 Title :

Signal : EIC Ion 371.00 (370.70 to 371.70): 02101003.D\data.ms

peak #	R.T. min	first scan	max scan	last scan	PK TY	peak height	corr. area	corr. % max.	% of total
1	3.812	3	6	15	BV	8796	97247	3.04%	1.991%
2	3.897	15	21	30	PV	103600	1303802	40.75%	26.690%
3	3.980	30	37	46	PV 3	4236	63766	1.99%	1.305%
4	4.074	46	54	66	VV	4297	78272	2.45%	1.602%
5	4.475	123	129	137	VV	5833	86259	2.70%	1.766%
6	4.627	152	157	161	VV	3387	55956	1.75%	1.145%
7	4.687	161	168	190	VV	191660	3199710	100.00%	65.501%

Sum of corrected areas: 4885012

Signal : EIC Ion 473.00 (472.70 to 473.70): 02101003.D\data.ms

peak #	R.T. min	first scan	max scan	last scan	PK TY	peak height	corr. area	corr. % max.	% of total
1	4.689	155	169	188	BV	89853	1503830	100.00%	100.000%

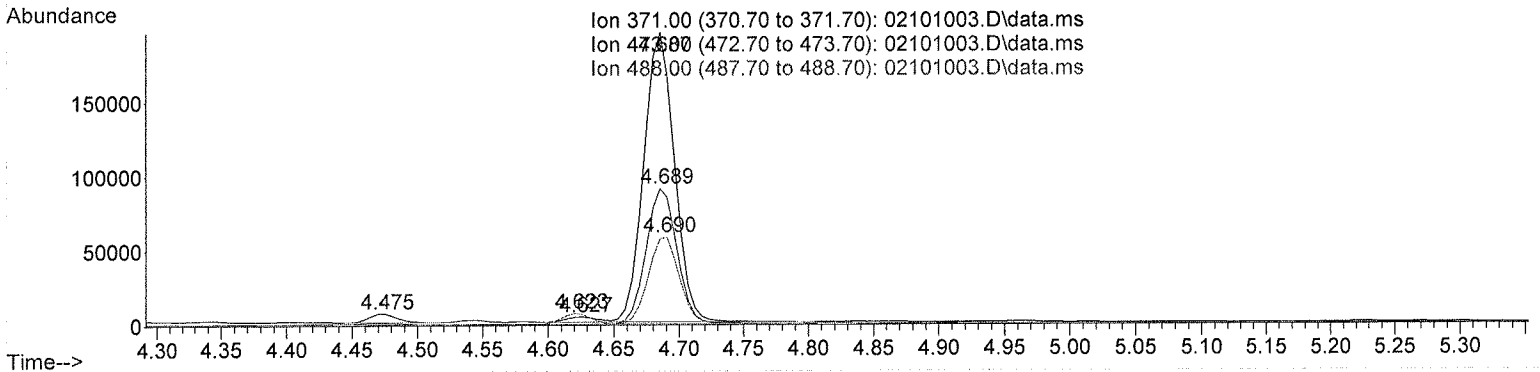
Sum of corrected areas: 1503830

Signal : EIC Ion 488.00 (487.70 to 488.70): 02101003.D\data.ms

peak #	R.T. min	first scan	max scan	last scan	PK TY	peak height	corr. area	corr. % max.	% of total
1	4.623	143	156	162	BV	6990	111930	11.55%	10.356%
2	4.690	162	169	185	VV	58612	968890	100.00%	89.644%

Sum of corrected areas: 1080820

TOXI-A 10115.M Wed Mar 15 22:38:21 2017



[Handwritten signature]

Area Percent Report

Data Path : D:\DATA\2017\3-15-17 Gen Drug and c-thc\
 Data File : 02101019.D
 Acq On : 15 Mar 2017 19:04
 Operator : Instrument 65198
 Sample : positive control
 Misc : FE03121501 in neg lot 31517; am 3
 ALS Vial : 21 Sample Multiplier: 1

Integration Parameters: autoint1.e
 Integrator: ChemStation

Method : D:\DATA\2016\852016a ta\psilocyn .D\TOXI-A 10115.M
 Title :

Signal : EIC Ion 371.00 (370.70 to 371.70): 02101019.D\data.ms

peak #	R.T. min	first scan	max scan	last scan	PK TY	peak height	corr. area	corr. % max.	% of total
1	3.813	3	6	15	BV 2	7260	85673	2.67%	1.650%
2	3.898	15	22	31	PV	125590	1632562	50.91%	31.450%
3	3.981	31	37	46	PV	3181	49564	1.55%	0.955%
4	4.074	46	54	65	VV	3829	74062	2.31%	1.427%
5	4.475	123	129	137	PV	5004	82293	2.57%	1.585%
6	4.629	152	157	161	VV 2	3571	59831	1.87%	1.153%
7	4.688	161	168	191	VB	198714	3206930	100.00%	61.780%

Sum of corrected areas: 5190915

Signal : EIC Ion 473.00 (472.70 to 473.70): 02101019.D\data.ms

peak #	R.T. min	first scan	max scan	last scan	PK TY	peak height	corr. area	corr. % max.	% of total
1	4.689	156	169	189	BV	93596	1502817	100.00%	100.000%

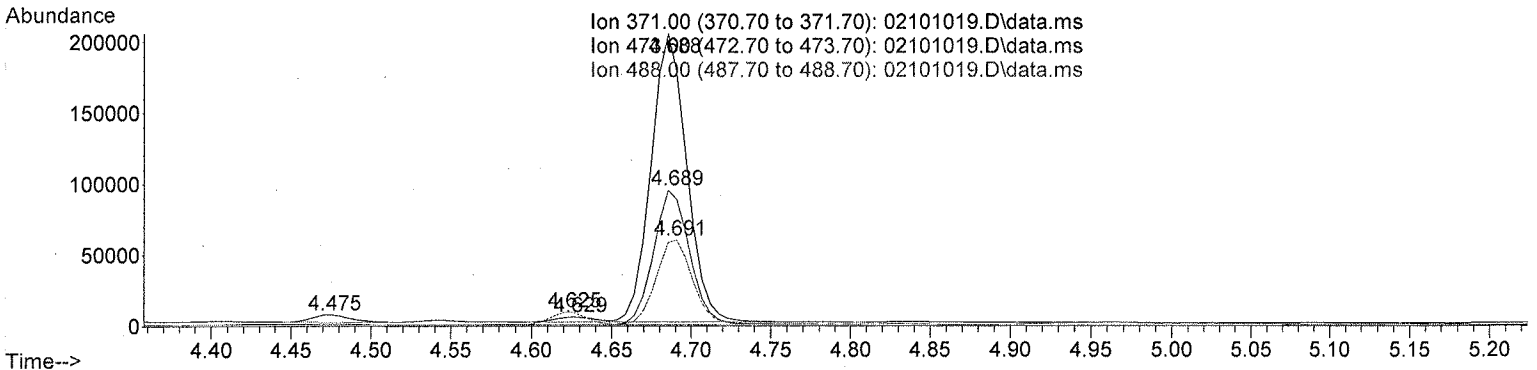
Sum of corrected areas: 1502817

Signal : EIC Ion 488.00 (487.70 to 488.70): 02101019.D\data.ms

peak #	R.T. min	first scan	max scan	last scan	PK TY	peak height	corr. area	corr. % max.	% of total
1	4.625	144	157	162	BV 2	8845	140706	14.60%	12.741%
2	4.691	162	169	185	VV	59427	963679	100.00%	87.259%

Sum of corrected areas: 1104384

TOXI-A 10115.M Wed Mar 15 22:38:38 2017



Handwritten signature

Area Percent Report

Data Path : D:\DATA\2017\3-15-17 Gen Drug and c-thc\
 Data File : 02301004.D
 Acq On : 15 Mar 2017 16:44
 Operator : Instrument 65198
 Sample : brc3 control
 Misc : lot 68430; am 3
 ALS Vial : 23 Sample Multiplier: 1

Integration Parameters: autoint1.e
 Integrator: ChemStation

Method : D:\DATA\2016\852016a ta\psilocyn .D\TOXI-A 10115.M
 Title :

Signal : EIC Ion 371.00 (370.70 to 371.70): 02301004.D\data.ms

peak #	R.T. min	first scan	max scan	last scan	PK TY	peak height	corr. area	corr. % max.	% of total
1	3.895	8	21	29	BV	3002	41351	4.79%	4.265%
2	4.687	147	168	189	BB	48987	862653	100.00%	88.984%
3	4.902	197	208	220	BB	3711	65446	7.59%	6.751%

Sum of corrected areas: 969450

Signal : EIC Ion 473.00 (472.70 to 473.70): 02301004.D\data.ms

peak #	R.T. min	first scan	max scan	last scan	PK TY	peak height	corr. area	corr. % max.	% of total
1	4.688	158	169	189	BB	23298	415295	100.00%	67.229%
2	4.905	201	209	218	BB	2701	47959	11.55%	7.764%
3	5.170	247	258	277	BB	7173	154482	37.20%	25.008%

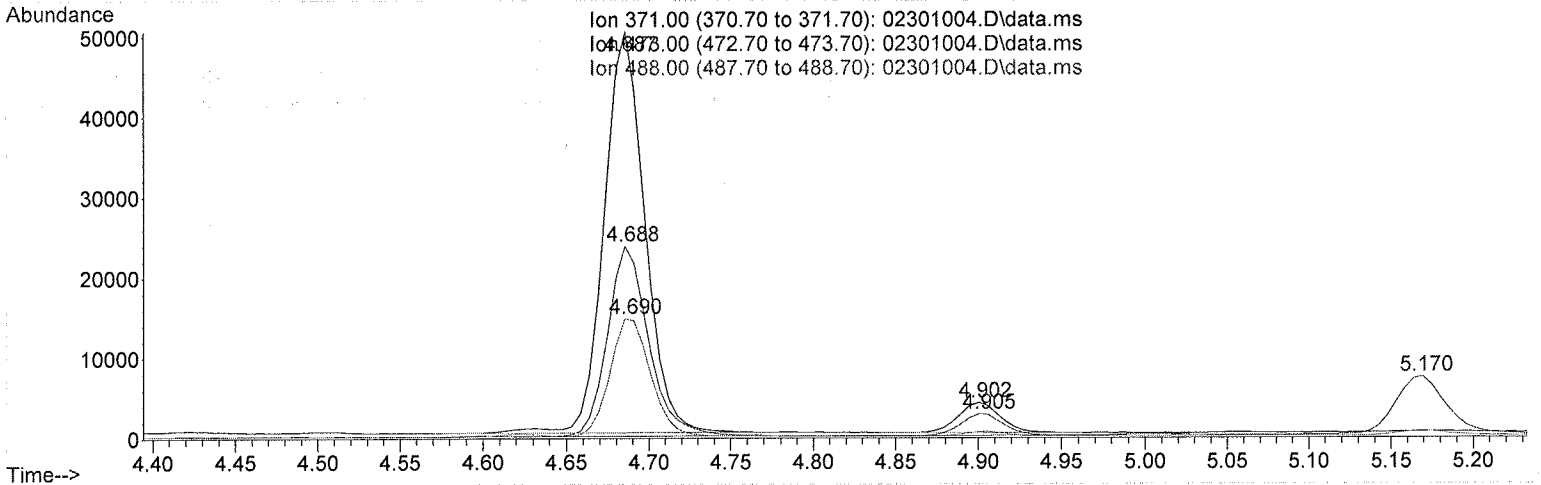
Sum of corrected areas: 617736

Signal : EIC Ion 488.00 (487.70 to 488.70): 02301004.D\data.ms

peak #	R.T. min	first scan	max scan	last scan	PK TY	peak height	corr. area	corr. % max.	% of total
1	4.690	162	169	179	PB	14729	251372	100.00%	100.000%

Sum of corrected areas: 251372

TOXI-A 10115.M Wed Mar 15 22:39:14 2017



[Handwritten signature]

2.4.4 Carboxy-THC QC Calculations

Run Date: 3/15/2017

Case Calculations:

Lab Case #: BRC3-68430

EIC Ion 371 Corr. Area:	<u>862653</u>	
EIC Ion 473 Corr. Area:	<u>415295</u>	473:371 Ratio: <u>0.481</u>
EIC Ion 488 Corr. Area:	<u>251372</u>	488:371 Ratio: <u>0.291</u>

Quality Control Calculations:

Retention Time acceptable range: 4.588 to 4.787

	<i>1st ctrl</i>	<i>2nd ctrl</i>
EIC Ion 371 Corr. Area:	<u>3199710</u>	<u>3206930</u>
EIC Ion 473 Corr. Area:	<u>1503830</u>	<u>1502817</u>
EIC Ion 488 Corr. Area:	<u>968890</u>	<u>963679</u>

Approximate minimum corrected area of 371 ion: ~ **639942**

Ratio of 473:371			
<i>1st ctrl</i>	<u>0.470</u>	<i>2nd ctrl</i>	<u>0.469</u>
		avg.	0.469

Accepted Range
(+/- 20%) 0.375 - 0.563

Ratio of 488:371			
<i>1st ctrl</i>	<u>0.303</u>	<i>2nd ctrl</i>	<u>0.300</u>
		avg	0.302

Accepted Range
(+/- 20%) 0.241 - 0.362

Carboxy-calculation sheet
Revision 0 effective date 10/23/13
Issuing authority: Quality Manager