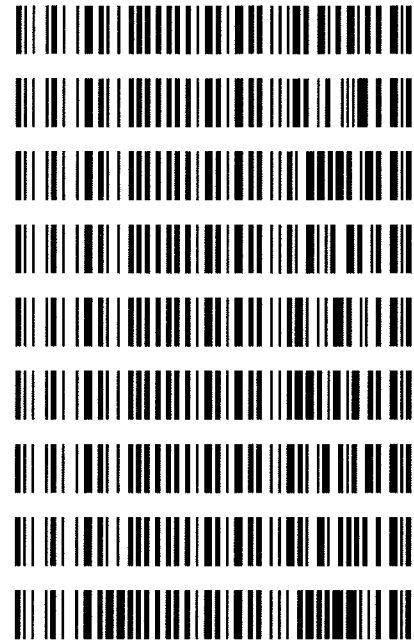




Worklist: 1644

<u>LAB CASE</u>	<u>ITEM</u>	<u>TASK ID</u>	<u>DESCRIPTION</u>
C2017-0564	3	81064	AM 3 Urine Carboxy-THC
C2017-0572	1	81065	AM 3 Urine Carboxy-THC
C2017-0580	1	81066	AM 3 Urine Carboxy-THC
C2017-0583	2	81067	AM 3 Urine Carboxy-THC
C2017-0600	1	81068	AM 3 Urine Carboxy-THC
C2017-0605	1	81069	AM 3 Urine Carboxy-THC
C2017-0620	1	81070	AM 3 Urine Carboxy-THC
C2017-0624	1	81071	AM 3 Urine Carboxy-THC
P2017-0645	2	81072	AM 3 Urine Carboxy-THC



Area Percent Report

Data Path : D:\DATA\2017\4-6-2017 BAW\
Data File : 02201079.D
Acq On : 06 Apr 2017 10:31
Operator : Instrument 65198
Sample : negative control
Misc : lot 42517; am 3 lot 31517
ALS Vial : 22 Sample Multiplier: 1

Integration Parameters: autoint1.e
Integrator: ChemStation

Method : D:\DATA\2016\852016a ta\psilocyn .D\TOXI-A 10115.M
Title :

Signal : EIC Ion 371.00 (370.70 to 371.70): 02201079.D\data.ms

peak #	R.T. min	first scan	max scan	last scan	PK TY	peak height	corr. area	corr. % max.	% of total
1	3.826	3	8	17	BV 2	6419	109208	22.67%	15.660%
2	3.909	17	24	32	PV	38075	481688	100.00%	69.073%
3	4.087	48	57	69	VV	2980	57342	11.90%	8.223%
4	4.642	149	160	166	BV	3136	49119	10.20%	7.044%

Sum of corrected areas: 697358

Signal : EIC Ion 473.00 (472.70 to 473.70): 02201079.D\data.ms

peak #	R.T. min	first scan	max scan	last scan	PK TY	peak height	corr. area	corr. % max.	% of total
--------	----------	------------	----------	-----------	-------	-------------	------------	--------------	------------

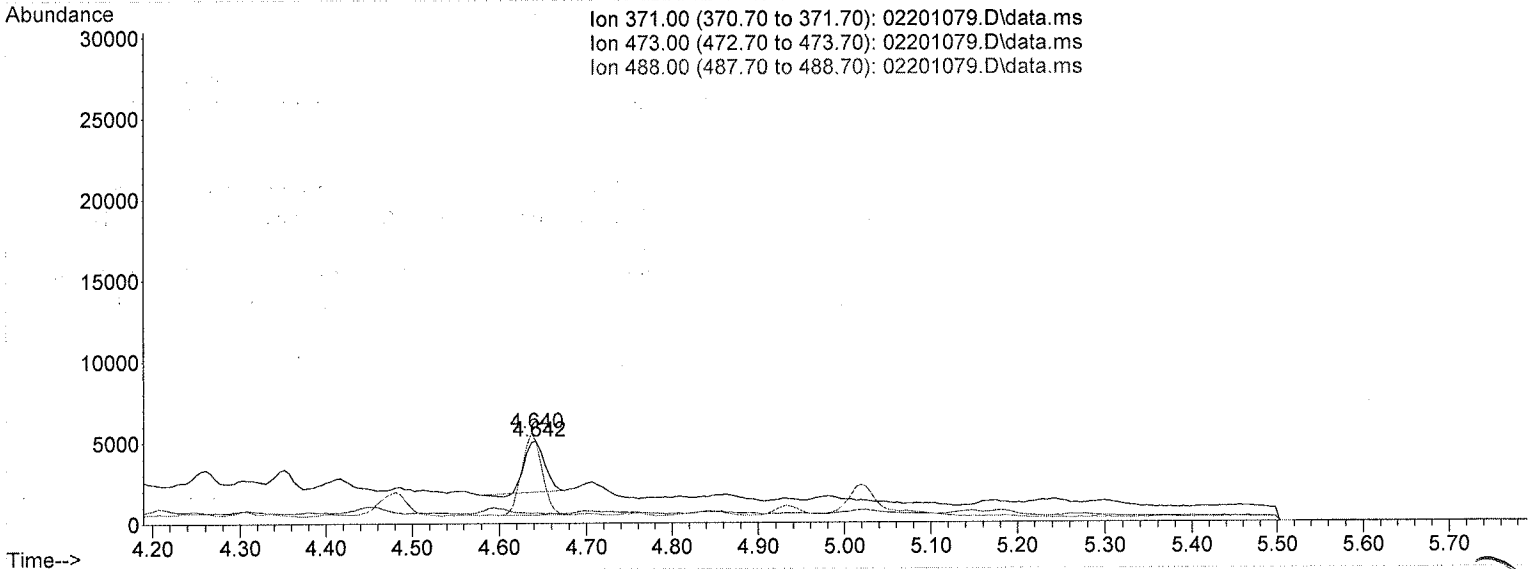
No peaks were detected using the method integration parameters!

Signal : EIC Ion 488.00 (487.70 to 488.70): 02201079.D\data.ms

peak #	R.T. min	first scan	max scan	last scan	PK TY	peak height	corr. area	corr. % max.	% of total
1	4.640	153	160	169	BB	4974	82052	100.00%	100.000%

Sum of corrected areas: 82052

TOXI-A 10115.M Thu Apr 06 11:41:31 2017



Area Percent Report

Data Path : D:\DATA\2017\4-6-2017 BAW\
 Data File : 02101080.D
 Acq On : 06 Apr 2017 10:40
 Operator : Instrument 65198
 Sample : positive control
 Misc : FE03121501 in neg lot 31517; am 3
 ALS Vial : 21 Sample Multiplier: 1

Integration Parameters: autoint1.e
 Integrator: ChemStation

Method : D:\DATA\2016\852016a ta\psilocyn .D\TOXI-A 10115.M
 Title :

Signal : EIC Ion 371.00 (370.70 to 371.70): 02101080.D\data.ms

peak #	R.T. min	first scan	max scan	last scan	PK TY	peak height	corr. area	corr. % max.	% of total
1	3.817	3	7	16	PH 2	10683	247477	8.22%	6.248%
2	3.899	16	22	31	VV	33757	474766	15.77%	11.985%
3	3.984	31	38	47	VV	3501	91854	3.05%	2.319%
4	4.077	47	55	65	VV	3617	78906	2.62%	1.992%
5	4.630	147	158	162	BV	3455	56899	1.89%	1.436%
6	<u>4.689</u>	162	169	192	VB	176509	<u>3011271</u>	100.00%	76.020%

Sum of corrected areas: 3961173

Signal : EIC Ion 473.00 (472.70 to 473.70): 02101080.D\data.ms

peak #	R.T. min	first scan	max scan	last scan	PK TY	peak height	corr. area	corr. % max.	% of total
1	4.690	159	169	191	BV	79076	<u>1355073</u>	100.00%	100.000%

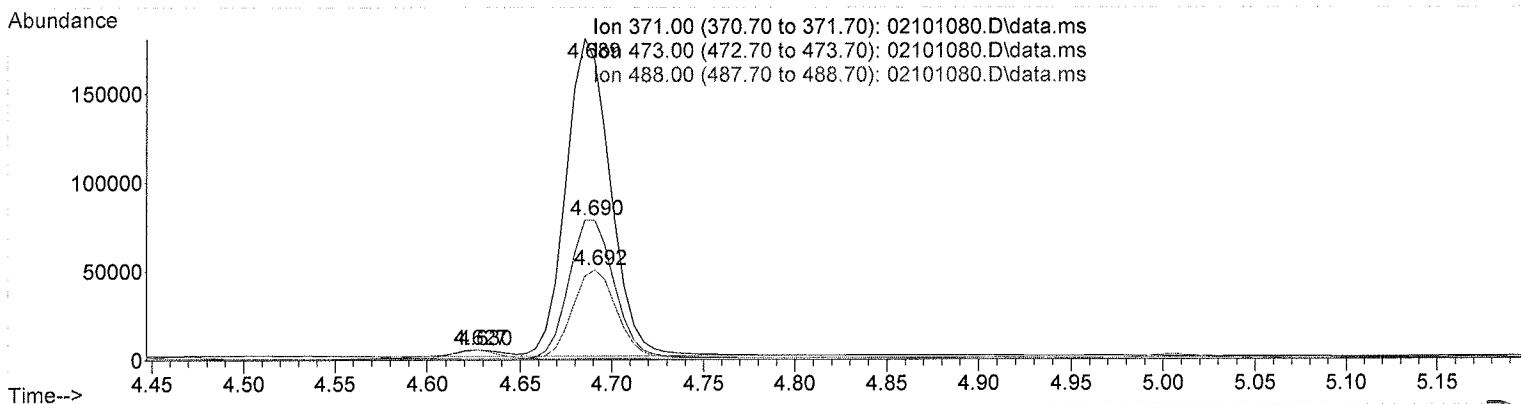
Sum of corrected areas: 1355073

Signal : EIC Ion 488.00 (487.70 to 488.70): 02101080.D\data.ms

peak #	R.T. min	first scan	max scan	last scan	PK TY	peak height	corr. area	corr. % max.	% of total
1	4.627	151	157	163	BV	5162	83645	9.93%	9.029%
2	4.692	163	169	187	VB	49363	<u>842749</u>	100.00%	90.971%

Sum of corrected areas: 926394

TOXI-A 10115.M Thu Apr 06 11:41:15 2017



[Handwritten signature]

Area Percent Report

Data Path : D:\DATA\2017\4-6-2017 BAW\
 Data File : 02101100.D
 Acq On : 06 Apr 2017 13:47
 Operator : Instrument 65198
 Sample : positive control
 Misc : FE03121501 in neg lot 31517; am 3
 ALS Vial : 21 Sample Multiplier: 1

Integration Parameters: autoint1.e
 Integrator: ChemStation

Method : D:\DATA\2016\852016a ta\psilocyn .D\TOXI-A 10115.M
 Title :

Signal : EIC Ion 371.00 (370.70 to 371.70): 02101100.D\data.ms

peak #	R.T. min	first scan	max scan	last scan	PK TY	peak height	corr. area	corr. % max.	% of total
1	3.822	3	8	17	BV 2	7286	111925	3.39%	2.701%
2	3.906	17	23	32	PV	41315	544141	16.46%	13.130%
3	3.990	32	39	48	PV 2	3019	51578	1.56%	1.245%
4	4.083	48	56	67	PV	3622	68392	2.07%	1.650%
5	4.639	147	159	163	BV	3935	61977	1.87%	1.496%
6	4.698	163	170	194	VV	194049	3306086	100.00%	79.778%

Sum of corrected areas: 4144099

Signal : EIC Ion 473.00 (472.70 to 473.70): 02101100.D\data.ms

peak #	R.T. min	first scan	max scan	last scan	PK TY	peak height	corr. area	corr. % max.	% of total
1	4.700	162	171	193	BV	87469	1491784	100.00%	100.000%

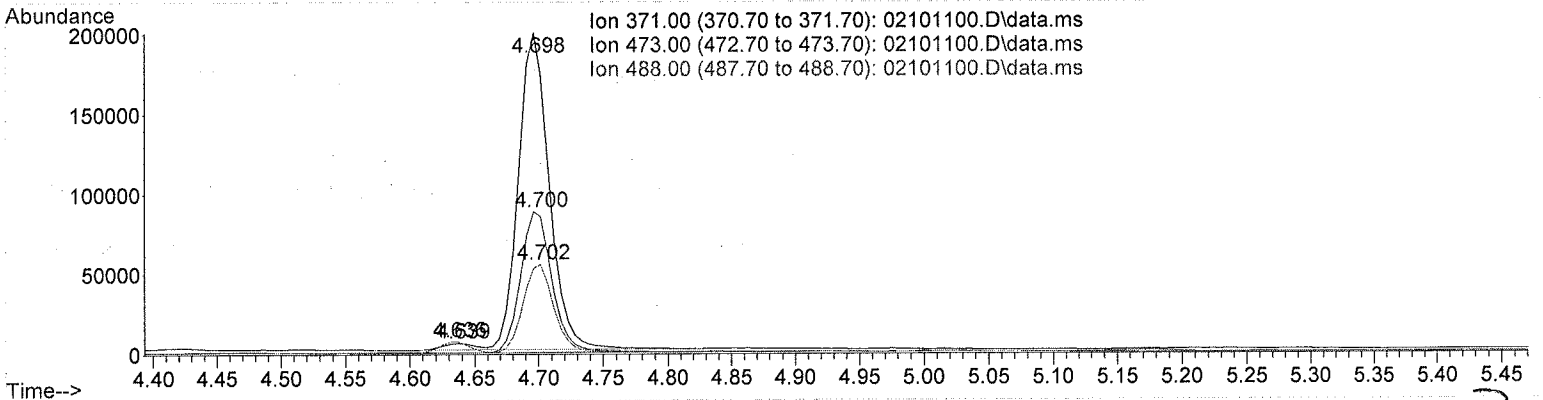
Sum of corrected areas: 1491784

Signal : EIC Ion 488.00 (487.70 to 488.70): 02101100.D\data.ms

peak #	R.T. min	first scan	max scan	last scan	PK TY	peak height	corr. area	corr. % max.	% of total
1	4.636	148	159	164	BV	7076	114392	12.33%	10.980%
2	4.702	164	171	190	VV	54665	927465	100.00%	89.020%

Sum of corrected areas: 1041858

TOXI-A 10115.M Thu Apr 06 14:27:12 2017



[Handwritten signature]

Area Percent Report

Data Path : D:\DATA\2017\4-6-2017 BAW\
 Data File : 02301081.D
 Acq On : 06 Apr 2017 10:50
 Operator : Instrument 65198
 Sample : brc3 control
 Misc : lot 68430; am 3
 ALS Vial : 23 Sample Multiplier: 1

Integration Parameters: autoint1.e
 Integrator: ChemStation

Method : D:\DATA\2016\852016a ta\psilocyn .D\TOXI-A 10115.M
 Title :

Signal : EIC Ion 371.00 (370.70 to 371.70): 02301081.D\data.ms

peak #	R.T. min	first scan	max scan	last scan	PK TY	peak height	corr. area	corr. % max.	% of total
1	3.899	14	22	30	PV	4222	72400	11.01%	9.917%
2	4.689	147	169	191	BB	38785	657655	100.00%	90.083%

Sum of corrected areas: 730056

Signal : EIC Ion 473.00 (472.70 to 473.70): 02301081.D\data.ms

peak #	R.T. min	first scan	max scan	last scan	PK TY	peak height	corr. area	corr. % max.	% of total
1	4.691	158	169	189	BB	17170	297952	100.00%	77.612%
2	5.172	243	258	274	BB	3883	85950	28.85%	22.388%

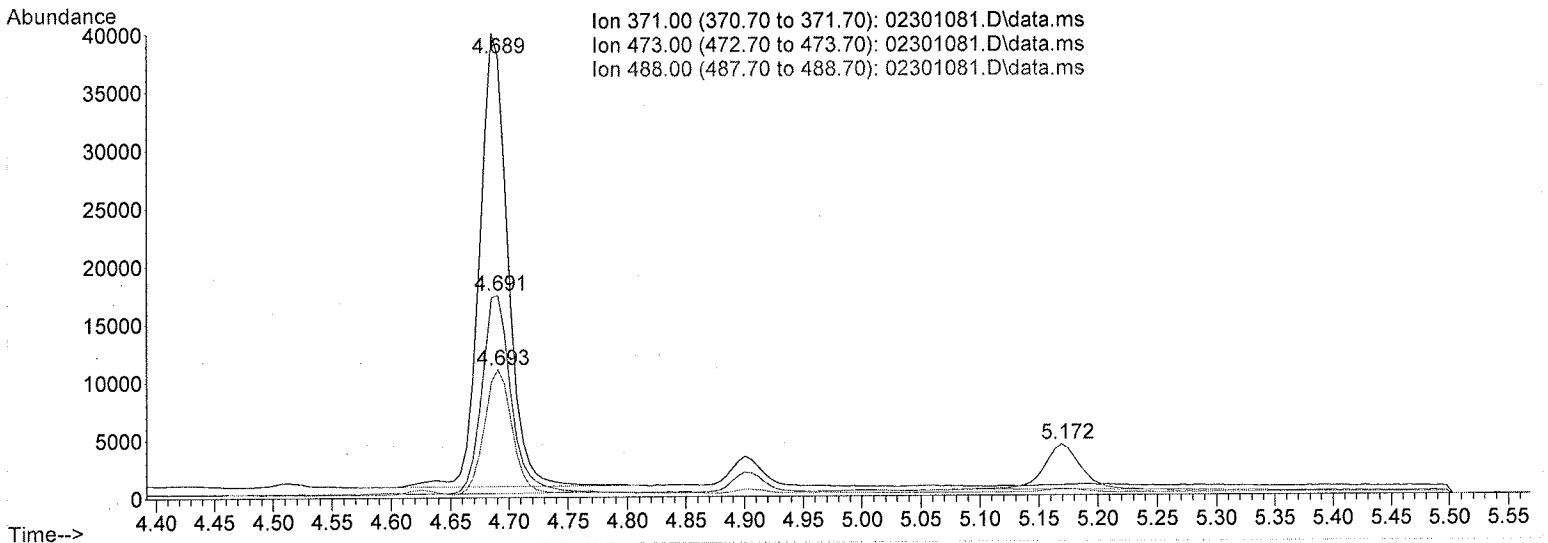
Sum of corrected areas: 383902

Signal : EIC Ion 488.00 (487.70 to 488.70): 02301081.D\data.ms

peak #	R.T. min	first scan	max scan	last scan	PK TY	peak height	corr. area	corr. % max.	% of total
1	4.693	162	169	179	PV	10537	174872	100.00%	100.000%

Sum of corrected areas: 174872

TOXI-A 10115.M Thu Apr 06 11:41:48 2017



Handwritten signature

2.4.4 Carboxy-THC QC Calculations

Run Date: 4/6/2017

Case Calculations:

Lab Case #: *BRC3-68430*

EIC Ion 371 Corr. Area:	657655		
EIC Ion 473 Corr. Area:	297952	473:371 Ratio:	0.453
EIC Ion 488 Corr. Area:	174872	488:371 Ratio:	0.266

Quality Control Calculations:

Retention Time acceptable range: 4.598 to 4.789

	<i>1st ctrl</i>	<i>2nd ctrl</i>
EIC Ion 371 Corr. Area:	3011271	3306086
EIC Ion 473 Corr. Area:	1355073	1491784
EIC Ion 488 Corr. Area:	842749	114392 <i>927465</i> <i>BW</i>

Approximate minimum corrected area of 371 ion: ~ **602254**

		<i>Ratio of 473:371</i>			
<i>1st ctrl</i>	<u>0.450</u>	<i>2nd ctrl</i>	<u>0.451</u>	avg.	0.451

Accepted Range (+/- 20%) **0.360 - 0.541**

		<i>Ratio of 488:371</i>			
<i>1st ctrl</i>	<u>0.280</u>	<i>2nd ctrl</i>	0.038 <i>0.281</i>	avg.	0.157 <i>0.280</i> <i>BW</i>

Accepted Range (+/- 20%) ~~**0.126 - 0.189**~~

0.224 - 0.336 *BW*

Carboxy-calculation sheet
Revision 0 effective date 10/23/13
Issuing authority: Quality Manager