



**Worklist: 1733**

<u>LAB CASE</u>	<u>ITEM</u>	<u>TASK ID</u>	<u>DESCRIPTION</u>
C2017-0890	1	85244	AM 3 Urine Carboxy-THC
C2017-0936	1	85245	AM 3 Urine Carboxy-THC
C2017-0937	1	85246	AM 3 Urine Carboxy-THC
C2017-0950	1	85247	AM 3 Urine Carboxy-THC
C2017-0969	1	85250	AM 3 Urine Carboxy-THC
M2017-2126	3	85248	AM 3 Urine Carboxy-THC
M2017-2131	3	85249	AM 3 Urine Carboxy-THC



Area Percent Report

Data Path : D:\DATA\2017\5-23-2017\  
 Data File : 02301030.D  
 Acq On : 23 May 2017 12:44  
 Operator : Instrument 65198  
 Sample : brc3 control  
 Misc : lot 68440; am 3  
 ALS Vial : 23 Sample Multiplier: 1

Integration Parameters: autoint1.e  
 Integrator: ChemStation

Method : D:\DATA\2017\2017 Reference Materials\Stimulant Drug Mix A.D\TOXI-A 10115.M  
 Title :

Signal : EIC Ion 371.00 (370.70 to 371.70): 02301030.D\data.ms

peak #	R.T. min	first scan	max scan	last scan	PK TY	peak height	corr. area	corr. % max.	% of total
1	3.877	5	18	46	BV	8342951	119735194	100.00%	98.204%
2	4.496	125	133	143	PV	14782	265083	0.22%	0.217%
3	4.600	143	152	157	VV	41593	664676	0.56%	0.545%
4	4.655	157	162	178	VV	71836	1196816	1.00%	0.982%
5	4.861	189	201	209	BV	3816	63308	0.05%	0.052%

Sum of corrected areas: 121925077

Signal : EIC Ion 473.00 (472.70 to 473.70): 02301030.D\data.ms

peak #	R.T. min	first scan	max scan	last scan	PK TY	peak height	corr. area	corr. % max.	% of total
1	4.204	67	79	92	VB 2	23280	321300	55.45%	31.788%
2	4.657	156	163	177	VV	33621	579427	100.00%	57.326%
3	4.863	194	201	211	BB	2794	48041	8.29%	4.753%
4	5.119	245	249	260	VB	3048	61980	10.70%	6.132%

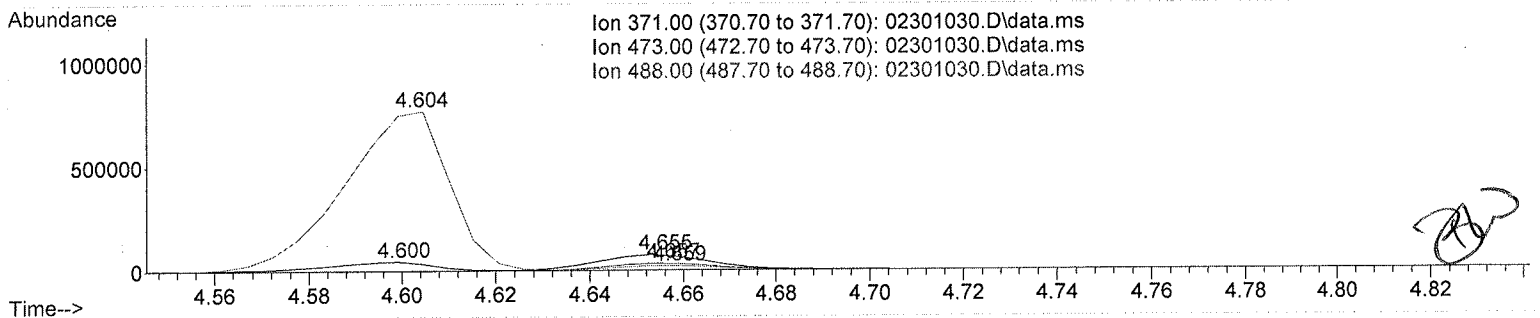
Sum of corrected areas: 1010749

Signal : EIC Ion 488.00 (487.70 to 488.70): 02301030.D\data.ms

peak #	R.T. min	first scan	max scan	last scan	PK TY	peak height	corr. area	corr. % max.	% of total
1	4.443	114	123	138	BV 2	33311	538365	4.43%	4.119%
2	4.604	138	153	159	VV	760605	12147761	100.00%	92.953%
3	4.659	159	163	183	VB	21705	382612	3.15%	2.928%

Sum of corrected areas: 13068738

TOXI-A 10115.M Tue May 23 14:18:59 2017



*Handwritten signature/initials*

Area Percent Report

Data Path : D:\DATA\2017\5-23-2017\  
 Data File : 02101028.D  
 Acq On : 23 May 2017 12:25  
 Operator : Instrument 65198  
 Sample : negative control  
 Misc : lot 42617; am 3  
 ALS Vial : 21 Sample Multiplier: 1

Integration Parameters: autoint1.e  
 Integrator: ChemStation

Method : D:\DATA\2017\2017 Reference Materials\Stimulant Drug Mix A.D\TOXI-A 10115.M  
 Title :

Signal : EIC Ion 371.00 (370.70 to 371.70): 02101028.D\data.ms

peak #	R.T. min	first scan	max scan	last scan	PK TY	peak height	corr. area	corr. % max.	% of total
1	3.821	3	7	13	PH	203886	3330156	2.56%	2.474%
2	3.891	13	20	48	VV	8419727	130051764	100.00%	96.607%
3	4.517	129	137	147	VV	30373	589744	0.45%	0.438%
4	4.617	147	155	163	VV	38858	648054	0.50%	0.481%

Sum of corrected areas: 134619718

Signal : EIC Ion 473.00 (472.70 to 473.70): 02101028.D\data.ms

peak #	R.T. min	first scan	max scan	last scan	PK TY	peak height	corr. area	corr. % max.	% of total
1	4.093	52	58	62	BV	2503	31889	2.17%	1.753%
2	4.221	73	82	96	BB	21316	318472	21.68%	17.502%
3	5.141	237	253	279	VB	70814	1469218	100.00%	80.745%

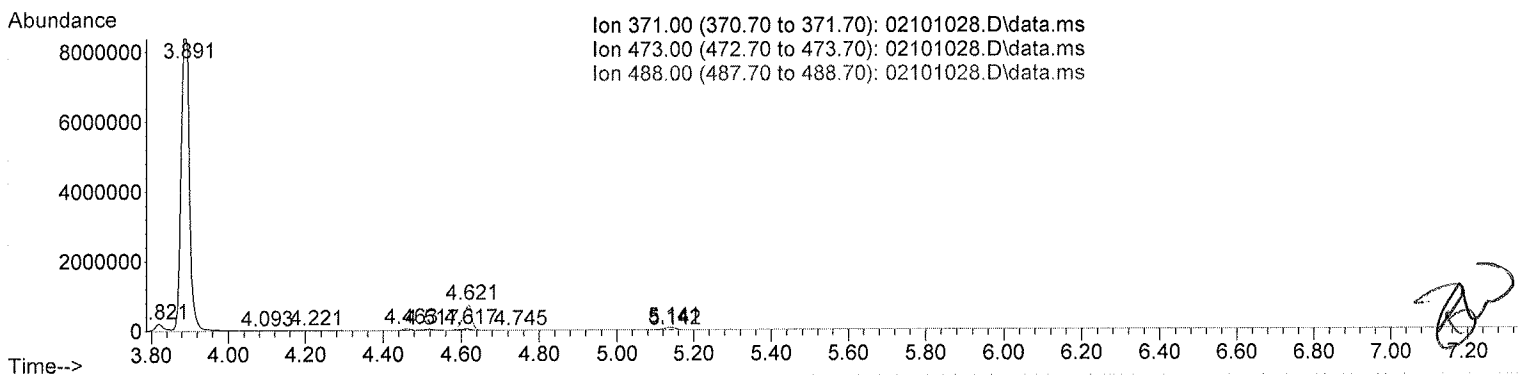
Sum of corrected areas: 1819580

Signal : EIC Ion 488.00 (487.70 to 488.70): 02101028.D\data.ms

peak #	R.T. min	first scan	max scan	last scan	PK TY	peak height	corr. area	corr. % max.	% of total
1	4.463	119	127	141	BV 2	56504	957611	8.28%	7.544%
2	4.621	141	156	168	VV	718182	11570064	100.00%	91.149%
3	4.745	175	179	193	VB 2	2795	51998	0.45%	0.410%
4	5.142	228	253	265	BB	5696	113860	0.98%	0.897%

Sum of corrected areas: 12693533

TOXI-A 10115.M Tue May 23 14:18:36 2017



Area Percent Report

Data Path : D:\DATA\2017\5-23-2017\  
 Data File : 02201029.D  
 Acq On : 23 May 2017 12:34  
 Operator : Instrument 65198  
 Sample : positive control  
 Misc : FE03121501 in neg lot 42617; am 3  
 ALS Vial : 22 Sample Multiplier: 1

Integration Parameters: autoint1.e  
 Integrator: ChemStation

Method : D:\DATA\2017\2017 Reference Materials\Stimulant Drug Mix A.D\TOXI-A 10115.M  
 Title :

Signal : EIC Ion 371.00 (370.70 to 371.70): 02201029.D\data.ms

peak #	R.T. min	first scan	max scan	last scan	PK TY	peak height	corr. area	corr. % max.	% of total
1	3.811	3	5	11	BV	147138	1473913	1.26%	1.187%
2	3.879	11	18	46	PV	8401150	117291280	100.00%	94.425%
3	4.503	126	134	144	VV	27218	466171	0.40%	0.375%
4	4.604	144	153	157	PV	39798	630776	0.54%	0.508%
5	4.662	157	164	179	VV	273035	4354128	3.71%	3.505%

Sum of corrected areas: 124216268

Signal : EIC Ion 473.00 (472.70 to 473.70): 02201029.D\data.ms

peak #	R.T. min	first scan	max scan	last scan	PK TY	peak height	corr. area	corr. % max.	% of total
1	4.081	50	56	60	BV 2	2485	30432	1.50%	0.804%
2	4.209	69	79	94	BB	22022	302821	14.95%	7.999%
3	4.663	156	164	179	VV	126501	2026005	100.00%	53.519%
4	5.124	223	250	279	VB	70614	1426295	70.40%	37.677%

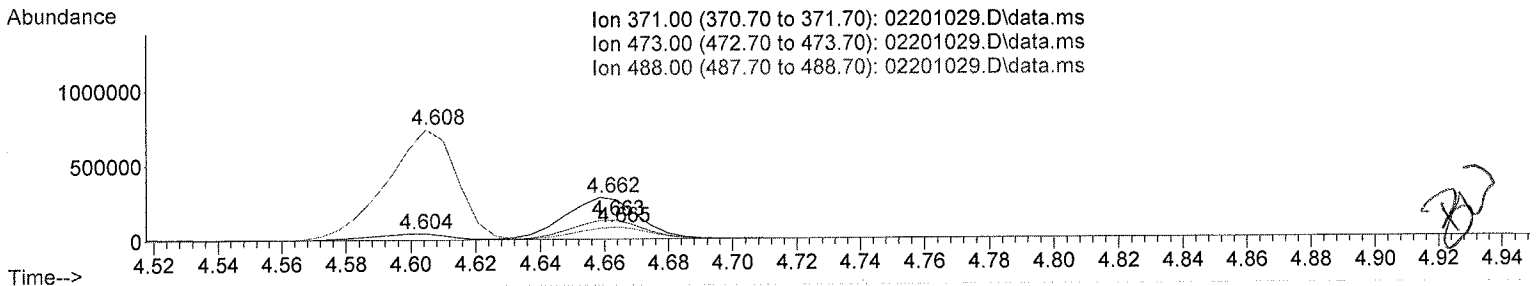
Sum of corrected areas: 3785553

Signal : EIC Ion 488.00 (487.70 to 488.70): 02201029.D\data.ms

peak #	R.T. min	first scan	max scan	last scan	PK TY	peak height	corr. area	corr. % max.	% of total
1	4.450	115	124	139	BV 2	49727	801247	7.12%	5.966%
2	4.608	139	154	159	PV	725714	11261030	100.00%	83.848%
3	4.665	159	164	172	VV	78590	1260959	11.20%	9.389%
4	5.125	228	250	261	BB	5579	106976	0.95%	0.797%

Sum of corrected areas: 13430212

TOXI-A 10115.M Tue May 23 14:18:49 2017



Area Percent Report

Data Path : D:\DATA\2017\5-23-2017\  
 Data File : 02201045.D  
 Acq On : 23 May 2017 15:03  
 Operator : Instrument 65198  
 Sample : positive control  
 Misc : FE03121501 in neg lot 42617; am 3  
 ALS Vial : 22 Sample Multiplier: 1

Integration Parameters: autoint1.e  
 Integrator: ChemStation

Method : D:\DATA\2017\2017 Reference Materials\Stimulant Drug Mix A.D\TOXI-A 10115.M  
 Title :

Signal : EIC Ion 371.00 (370.70 to 371.70): 02201045.D\data.ms

peak #	R.T. min	first scan	max scan	last scan	PK TY	peak height	corr. area	corr. % max.	% of total
1	3.874	5	17	65	BV	8330500	149655931	100.00%	96.836%
2	4.494	125	132	143	PV	8139	154488	0.10%	0.100%
3	4.604	143	153	157	PV	54861	950074	0.63%	0.615%
4	4.658	157	163	187	VV	207289	3784837	2.53%	2.449%

Sum of corrected areas: 154545331

Signal : EIC Ion 473.00 (472.70 to 473.70): 02201045.D\data.ms

peak #	R.T. min	first scan	max scan	last scan	PK TY	peak height	corr. area	corr. % max.	% of total
1	4.205	70	79	94	VB 2	28131	430092	24.88%	11.288%
2	4.659	156	163	179	VV	95084	1728740	100.00%	45.370%
3	5.119	207	249	278	BB	77895	1651493	95.53%	43.343%

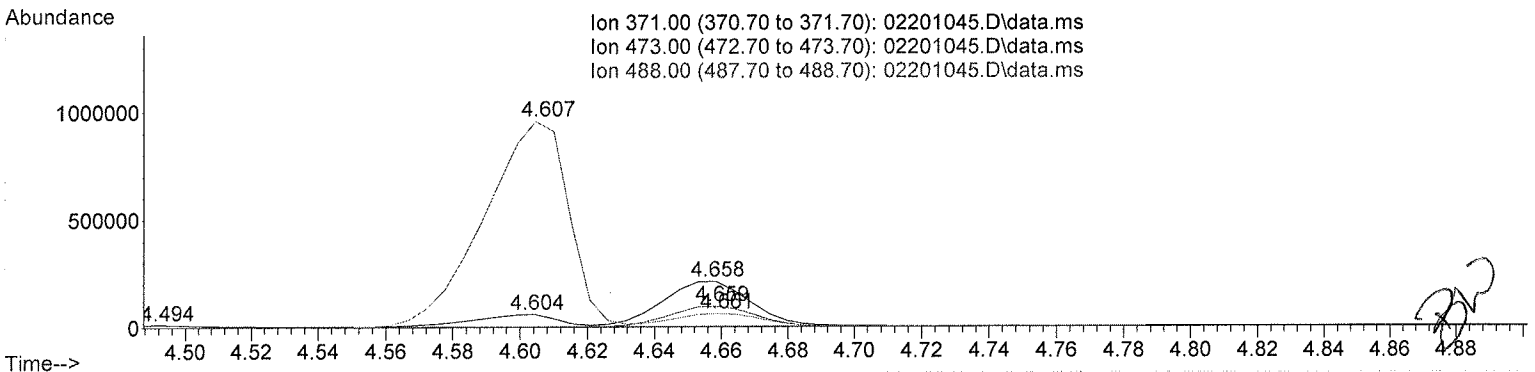
Sum of corrected areas: 3810325

Signal : EIC Ion 488.00 (487.70 to 488.70): 02201045.D\data.ms

peak #	R.T. min	first scan	max scan	last scan	PK TY	peak height	corr. area	corr. % max.	% of total
1	4.441	110	123	137	BV 2	19984	338827	2.04%	1.865%
2	4.607	137	154	159	PV	948206	16597086	100.00%	91.362%
3	4.661	159	163	172	VV	59921	1110940	6.69%	6.115%
4	5.121	236	249	263	BB	6250	119427	0.72%	0.657%

Sum of corrected areas: 18166280

TOXI-A 10115.M Tue May 23 15:30:22 2017



## 2.4.4 Carboxy-THC QC Calculations

Run Date: 5/23/2017

Case Calculations:

Lab Case #: BRC3- 68440

EIC Ion 371 Corr. Area:	<u>1196816</u>	
EIC Ion 473 Corr. Area:	<u>579427</u>	473:371 Ratio: <u>0.484</u>
EIC Ion 488 Corr. Area:	<u>382612</u>	488:371 Ratio: <u>0.320</u>

Quality Control Calculations:

Retention Time acceptable range: 4.562 to 4.758

	<i>1st ctrl</i>	<i>2nd ctrl</i>
EIC Ion 371 Corr. Area:	<u>4354128</u>	<u>3784837</u>
EIC Ion 473 Corr. Area:	<u>2026005</u>	<u>1728740</u>
EIC Ion 488 Corr. Area:	<u>1260959</u>	<u>1110940</u>

Approximate minimum corrected area of 371 ion: ~ **870826**

Ratio of 473:371			
<i>1st ctrl</i>	<u>0.465</u>	<i>2nd ctrl</i>	<u>0.457</u>
		avg.	<b>0.461</b>

Accepted Range  
(+/- 20%) 0.369 - 0.553

Ratio of 488:371			
<i>1st ctrl</i>	<u>0.290</u>	<i>2nd ctrl</i>	<u>0.294</u>
		avg	<b>0.292</b>

Accepted Range  
(+/- 20%) 0.233 - 0.350

Carboxy-calculation sheet  
Revision 0 effective date 10/23/13  
Issuing authority: Quality Manager

