

Worklist: 2267

<u>LAB_CASE</u>	<u>ITEM</u>	<u>TASK_ID</u>	<u>DESCRIPTION</u>	
C2018-0453	2	110719	AM 3 Urine Carboxy-THC	
M2018-0960	5	110708	AM 3 Urine Carboxy-THC	
P2018-0630	1	110720	AM 3 Urine Carboxy-THC	
P2018-0649	1	110709	AM 3 Urine Carboxy-THC	
P2018-0650	1	110710	AM 3 Urine Carboxy-THC	
P2018-0686	1	110711	AM 3 Urine Carboxy-THC	
P2018-0724	1	110721	AM 3 Urine Carboxy-THC	
P2018-0732	1	110712	AM 3 Urine Carboxy-THC	
P2018-0743	1	110713	AM 3 Urine Carboxy-THC	
P2018-0773	1	110714	AM 3 Urine Carboxy-THC	
P2018-0778	1	110715	AM 3 Urine Carboxy-THC	
P2018-0780	1	110716	AM 3 Urine Carboxy-THC	
P2018-0781	1	110717	AM 3 Urine Carboxy-THC	
P2018-0800	1	110718	AM 3 Urine Carboxy-THC	
P2018-0842	1	110722	AM 3 Urine Carboxy-THC	

Data Path : C:\My Files\cshrum\Desktop\Consolidated\Data\URINE\am 3 worklist 2267\
Data File : THC-NC.D
Acq On : 22 Mar 2018 07:28
Operator : ISP\datastor
Sample : Negative Control
Misc : Lot # POC112116; AM #3 Worklist 2267
ALS Vial : 76 Sample Multiplier: 1

Integration Parameters: events.e
Integrator: ChemStation

Method : C:\gcms\1\methods\TOX.M
Title :

Signal : EIC Ion 371.00 (370.70 to 371.70): THC-NC.D\data.ms

peak #	R.T. min	first scan	max scan	last scan	PK TY	peak height	corr. area	corr. % max.	% of total
1	5.281	49	68	82	BV 2	85	2185	20.03%	3.880%
2	5.600	171	179	195	VV	157	3266	29.93%	5.798%
3	5.742	216	228	240	PV	137	2537	23.25%	4.504%
4	5.932	286	294	322	VV	229	5205	47.70%	9.240%
5	6.072	322	343	356	PV	120	4226	38.74%	7.503%
6	6.222	376	395	409	VV	382	10911	100.00%	19.371%
7	6.294	409	420	435	VV	256	8514	78.03%	15.115%
8	6.362	435	444	456	VV	213	4550	41.70%	8.078%
9	6.427	456	466	494	VV	215	5369	49.21%	9.532%
10	6.601	494	527	557	PV	314	9564	87.66%	16.980%

Sum of corrected areas: 56327
Signal : EIC Ion 473.00 (472.70 to 473.70): THC-NC.D\data.ms

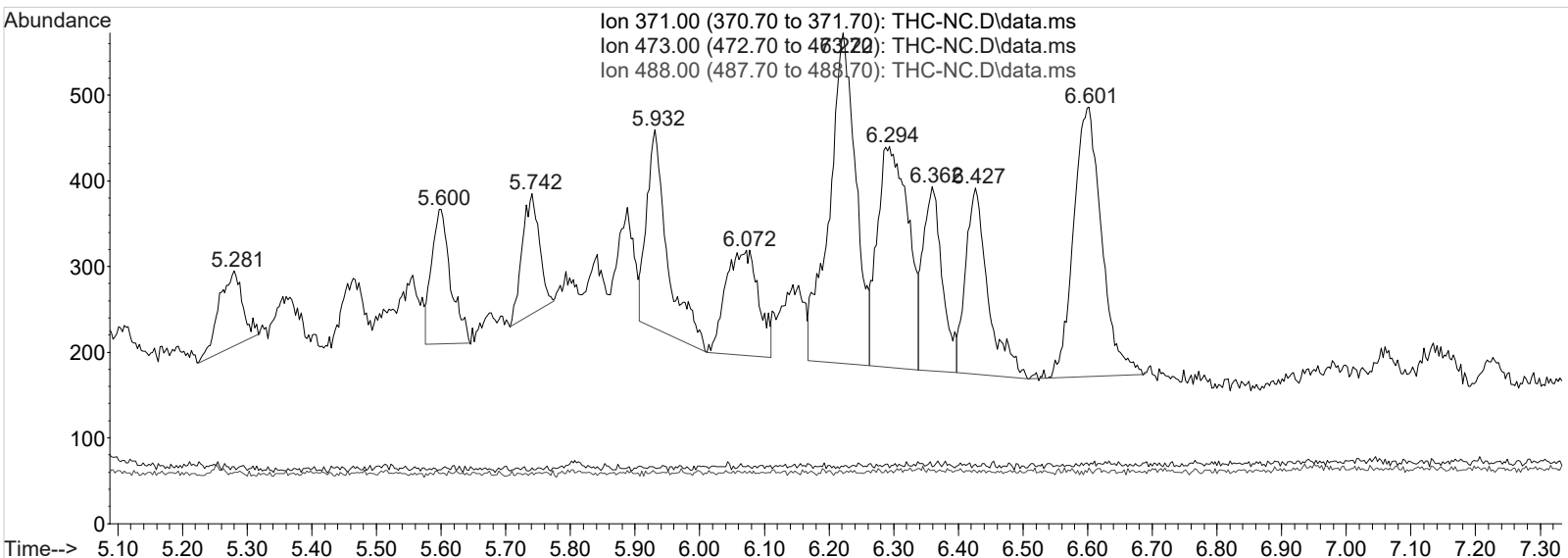
peak #	R.T. min	first scan	max scan	last scan	PK TY	peak height	corr. area	corr. % max.	% of total
--------	----------	------------	----------	-----------	-------	-------------	------------	--------------	------------

No peaks were detected using the method integration parameters!
Signal : EIC Ion 488.00 (487.70 to 488.70): THC-NC.D\data.ms

peak #	R.T. min	first scan	max scan	last scan	PK TY	peak height	corr. area	corr. % max.	% of total
--------	----------	------------	----------	-----------	-------	-------------	------------	--------------	------------

No peaks were detected using the method integration parameters!

TOX.M Thu Mar 22 15:07:01 2018



Data Path : C:\My Files\cshrum\Desktop\Consolidated\Data\URINE\am 3 worklist 2267\
 Data File : THC-PC1.D
 Acq On : 22 Mar 2018 07:39
 Operator : ISP\datastor
 Sample : Spiked Positive c-THC Control
 Misc : c-THC lot # 0497429 in Negative Lot # POC112116; Worklist 2267
 ALS Vial : 77 Sample Multiplier: 1

Integration Parameters: events.e
 Integrator: ChemStation

Method : C:\gcms\1\methods\TOX.M
 Title :

Signal : EIC Ion 371.00 (370.70 to 371.70): THC-PC1.D\data.ms

peak #	R.T. min	first scan	max scan	last scan	PK TY	peak height	corr. area	corr. % max.	% of total
1	5.331	73	86	117	VV	1340	24372	100.00%	49.970%
2	5.741	216	228	239	PV	105	1903	7.81%	3.901%
3	5.932	286	294	316	VV	161	2934	12.04%	6.015%
4	6.223	379	396	409	BV	245	5798	23.79%	11.888%
5	6.292	409	419	436	VV	161	4678	19.19%	9.591%
6	6.424	455	465	481	VV	129	2514	10.31%	5.154%
7	6.597	491	525	564	BV	212	6575	26.98%	13.481%

Sum of corrected areas: 48773

Signal : EIC Ion 473.00 (472.70 to 473.70): THC-PC1.D\data.ms

peak #	R.T. min	first scan	max scan	last scan	PK TY	peak height	corr. area	corr. % max.	% of total
1	5.331	73	86	114	BB	499	8406	100.00%	100.000%

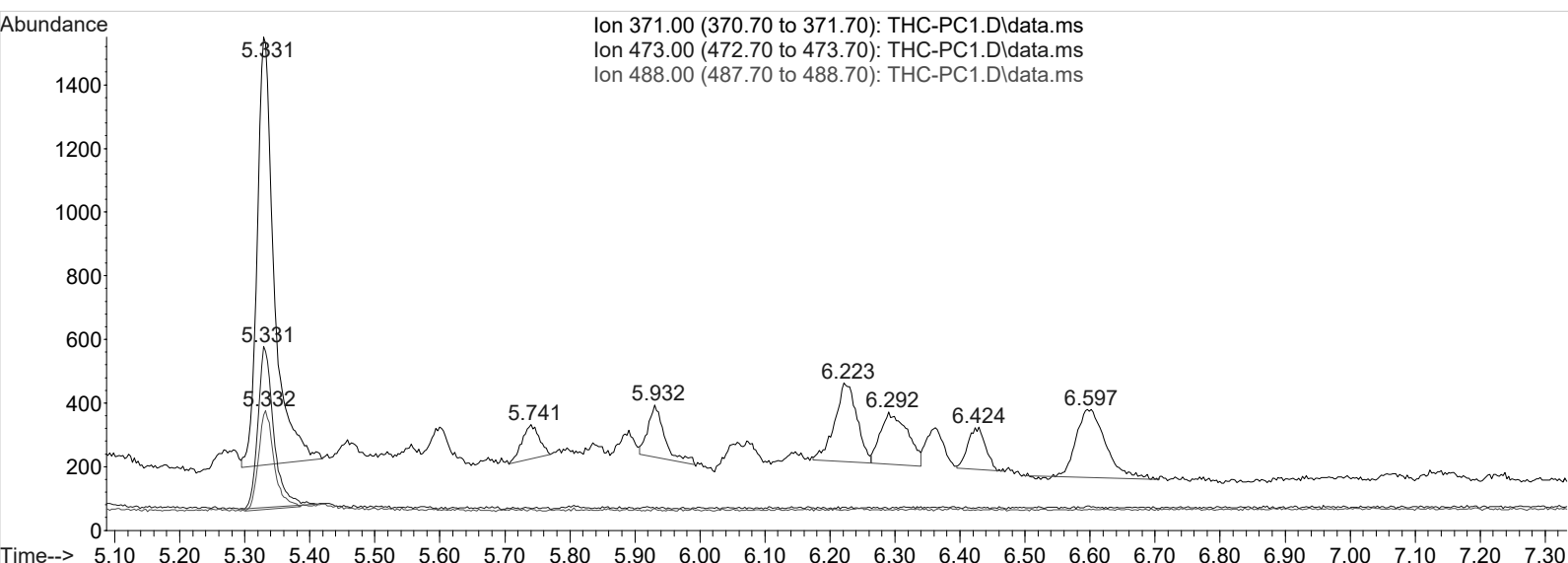
Sum of corrected areas: 8406

Signal : EIC Ion 488.00 (487.70 to 488.70): THC-PC1.D\data.ms

peak #	R.T. min	first scan	max scan	last scan	PK TY	peak height	corr. area	corr. % max.	% of total
1	5.332	75	86	105	BV	305	5035	100.00%	100.000%

Sum of corrected areas: 5035

TOX.M Thu Mar 22 15:02:43 2018



Data Path : C:\My Files\cshrum\Desktop\Consolidated\Data\URINE\am 3 worklist 2267\
Data File : THC-PC2.D
Acq On : 22 Mar 2018 15:10
Operator : ISP\datastor
Sample : Spiked Positive c-THC Control
Misc : c-THC lot # 0497429 in Negative Lot # POC112116; Worklist 2267
ALS Vial : 77 Sample Multiplier: 1

Integration Parameters: events.e
Integrator: ChemStation

Method : C:\gcms\1\methods\TOX.M
Title :

Signal : EIC Ion 371.00 (370.70 to 371.70): THC-PC2.D\data.ms

peak #	R.T. min	first scan	max scan	last scan	PK TY	peak height	corr. area	corr. % max.	% of total
1	5.282	49	69	73	PV 2	93	2161	3.11%	1.712%
2	5.327	73	84	116	VV	4531	69458	100.00%	55.022%
3	5.600	171	179	187	VV	138	2093	3.01%	1.658%
4	5.738	212	227	237	VV	175	3746	5.39%	2.967%
5	5.886	270	278	285	VV	162	3225	4.64%	2.555%
6	5.931	285	294	306	VV	258	5439	7.83%	4.309%
7	6.062	322	340	354	PV	119	3903	5.62%	3.092%
8	6.224	374	396	409	VV	396	10820	15.58%	8.571%
9	6.290	409	419	434	VV	249	7660	11.03%	6.068%
10	6.361	434	443	455	VV	200	3969	5.71%	3.144%
11	6.424	455	465	479	VV	201	3688	5.31%	2.921%
12	6.596	495	525	559	BV	323	10076	14.51%	7.982%

Sum of corrected areas: 126238
Signal : EIC Ion 473.00 (472.70 to 473.70): THC-PC2.D\data.ms

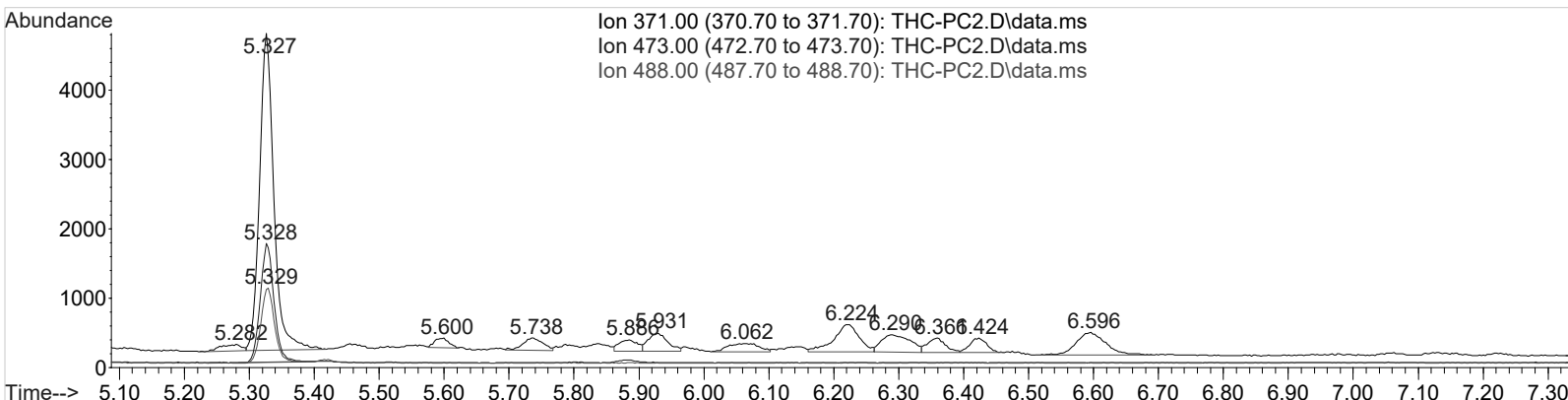
peak #	R.T. min	first scan	max scan	last scan	PK TY	peak height	corr. area	corr. % max.	% of total
1	5.328	69	85	109	BB	1700	25057	100.00%	100.000%

Sum of corrected areas: 25057
Signal : EIC Ion 488.00 (487.70 to 488.70): THC-PC2.D\data.ms

peak #	R.T. min	first scan	max scan	last scan	PK TY	peak height	corr. area	corr. % max.	% of total
1	5.329	53	85	105	BV	1067	15486	100.00%	100.000%

Sum of corrected areas: 15486

TOX.M Thu Mar 22 15:20:41 2018



Data Path : C:\My Files\cshrum\Desktop\Consolidated\Data\URINE\am 3 worklist 2267\
Data File : THC-C3.D
Acq On : 22 Mar 2018 09:20
Operator : ISP\datastor
Sample : Biorad C3 Control
Misc : C3 Lot # 68440; Worklist 2267
ALS Vial : 78 Sample Multiplier: 1

Integration Parameters: events.e
Integrator: ChemStation

Method : C:\gcms\1\methods\TOX.M
Title :

Signal : EIC Ion 371.00 (370.70 to 371.70): THC-C3.D\data.ms

peak #	R.T. min	first scan	max scan	last scan	PK TY	peak height	corr. area	corr. % max.	% of total
1	5.354	83	94	121	VV	1480	23529	100.00%	34.401%
2	5.622	164	187	204	BV 2	168	5042	21.43%	7.371%
3	5.765	224	236	248	BV	125	2539	10.79%	3.712%
4	5.960	296	304	333	VV	211	5228	22.22%	7.644%
5	6.103	333	354	364	PV	90	2901	12.33%	4.241%
6	6.251	386	405	420	BV	297	7592	32.27%	11.100%
7	6.321	420	429	445	VV	210	6111	25.97%	8.935%
8	6.392	445	454	466	VV	151	3068	13.04%	4.486%
9	6.459	466	478	491	PV	183	3336	14.18%	4.877%
10	6.628	516	536	566	PV	286	9052	38.47%	13.234%

Sum of corrected areas: 68398
Signal : EIC Ion 473.00 (472.70 to 473.70): THC-C3.D\data.ms

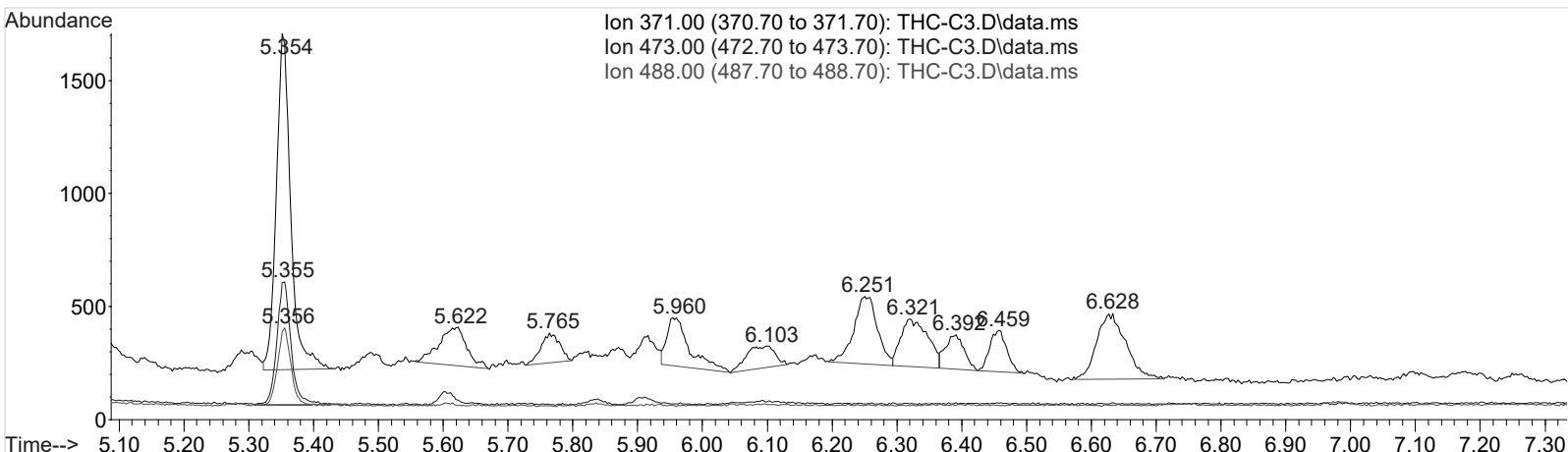
peak #	R.T. min	first scan	max scan	last scan	PK TY	peak height	corr. area	corr. % max.	% of total
1	5.355	79	94	125	BV	542	8440	100.00%	100.000%

Sum of corrected areas: 8440
Signal : EIC Ion 488.00 (487.70 to 488.70): THC-C3.D\data.ms

peak #	R.T. min	first scan	max scan	last scan	PK TY	peak height	corr. area	corr. % max.	% of total
1	5.356	82	94	109	BV	338	4931	100.00%	100.000%

Sum of corrected areas: 4931

TOX.M Thu Mar 22 15:03:58 2018



AM #3 Urine Carboxy-THC QC Calculations

Run Date: 3/22/2018

Case Calculations:
Lab Case #: BRC3 68440

<i>EIC Ion 371 Corr. Area:</i>	23529	
<i>EIC Ion 473 Corr. Area:</i>	8440	473:371 Ratio: 0.359
<i>EIC Ion 488 Corr. Area:</i>	4931	488:371 Ratio: 0.210

Quality Control Calculations:

Retention Time acceptable range: 5.231 to 5.427

	<i>1st ctrl</i>	<i>2nd ctrl</i>
<i>EIC Ion 371 Corr. Area:</i>	24372	69458
<i>EIC Ion 473 Corr. Area:</i>	8406	25057
<i>EIC Ion 488 Corr. Area:</i>	5035	15486

Approximate minimum corrected area of 371 ion: ~ 4874

<i>Ratio of 473:371</i>						
	<i>1st ctrl</i>	<u>0.345</u>	<i>2nd ctrl</i>	<u>0.361</u>	<i>avg.</i>	<u>0.353</u>
<i>Accepted Range</i> (+/- 20%)		<u>0.282 - 0.423</u>				

<i>Ratio of 488:371</i>						
	<i>1st ctrl</i>	<u>0.207</u>	<i>2nd ctrl</i>	<u>0.223</u>	<i>avg</i>	<u>0.215</u>
<i>Accepted Range</i> (+/- 20%):		<u>0.172 - 0.258</u>				

Carboxy-calculation sheet
Revision 0 effective date 10/23/13
Issuing authority: Quality Manager