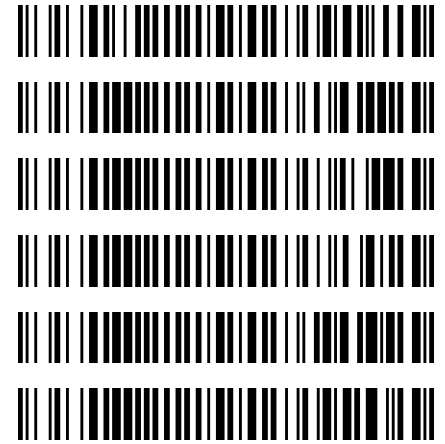


*Bylee*

*cg*

**Worklist: 2554**

<u>LAB_CASE</u>	<u>ITEM</u>	<u>TASK_ID</u>	<u>DESCRIPTION</u>
C2018-1269	2	120789	AM 3 Urine Carboxy-THC
P2018-1825	1	120790	AM 3 Urine Carboxy-THC
P2018-1840	1	120791	AM 3 Urine Carboxy-THC
P2018-1841	1	120792	AM 3 Urine Carboxy-THC
P2018-1854	1	120793	AM 3 Urine Carboxy-THC
P2018-1895	1	120794	AM 3 Urine Carboxy-THC



These samples were extracted on 7/10/18 but due to instrument issues, the samples failed to inject. The samples were re-extracted on 7/26/18. Samples for cases P2018-1966-2, P2018-2045-1, and P2018-2061-1 were not extracted on 7/10/18 but were included in the batch that was extracted on 7/26/18. *cg*

Data Path : C:\My Files\cshrum\Desktop\Consolidated\Data\URINE\AM 3 WORKLIST 2554\  
Data File : THC-NC.D  
Acq On : 26 Jul 2018 11:02  
Operator : ISP\datastor  
Sample : Negative Control  
Misc : Lot # POC112116; AM #3 Worklist 2554  
ALS Vial : 31 Sample Multiplier: 1

Integration Parameters: events.e  
Integrator: ChemStation

Method : C:\gcms\1\methods\TOX.M  
Title :

Signal : EIC Ion 371.00 (370.70 to 371.70): THC-NC.D\data.ms

peak #	R.T. min	first scan	max scan	last scan	PK TY	peak height	corr. area	corr. % max.	% of total
1	5.766	44	63	73	BV	286	4545	100.00%	100.000%

Sum of corrected areas: 4545

Signal : EIC Ion 473.00 (472.70 to 473.70): THC-NC.D\data.ms

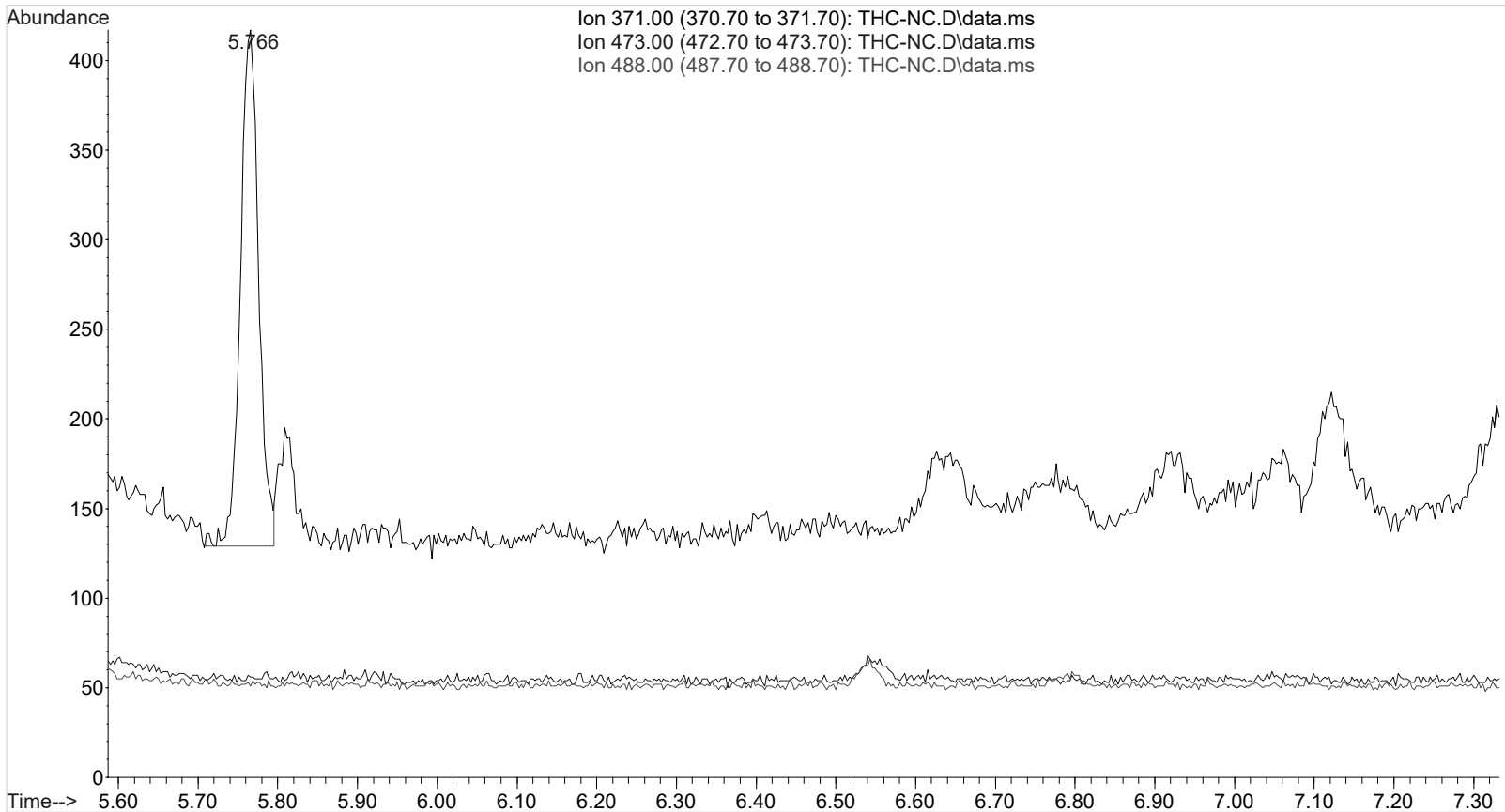
peak #	R.T. min	first scan	max scan	last scan	PK TY	peak height	corr. area	corr. % max.	% of total
--------	----------	------------	----------	-----------	-------	-------------	------------	--------------	------------

No peaks were detected using the method integration parameters!  
Signal : EIC Ion 488.00 (487.70 to 488.70): THC-NC.D\data.ms

peak #	R.T. min	first scan	max scan	last scan	PK TY	peak height	corr. area	corr. % max.	% of total
--------	----------	------------	----------	-----------	-------	-------------	------------	--------------	------------

No peaks were detected using the method integration parameters!

TOX.M Fri Jul 27 10:36:46 2018



Area Percent Report

CS

Data Path : C:\My Files\cshrum\Desktop\Consolidated\Data\URINE\AM 3 WORKLIST 2554\  
Data File : THC-PC1.D  
Acq On : 26 Jul 2018 11:14  
Operator : ISP\datastor  
Sample : Spiked Positive c-THC Control  
Misc : c-THC lot # 0497429 in Negative Lot # POC112116; Worklist 2554  
ALS Vial : 32 Sample Multiplier: 1

Integration Parameters: events.e  
Integrator: ChemStation

Method : C:\gcms\1\methods\TOX.M  
Title :

Signal : EIC Ion 371.00 (370.70 to 371.70): THC-PC1.D\data.ms

peak #	R.T. min	first scan	max scan	last scan	PK TY	peak height	corr. area	corr. % max.	% of total
1	5.768	42	64	73	PV	169	2434	9.10%	8.343%
2	6.682	351	381	402	BV 2	1359	26740	100.00%	91.657%

Sum of corrected areas: 29174

Signal : EIC Ion 473.00 (472.70 to 473.70): THC-PC1.D\data.ms

peak #	R.T. min	first scan	max scan	last scan	PK TY	peak height	corr. area	corr. % max.	% of total
1	6.683	365	382	408	BB 2	456	8551	100.00%	100.000%

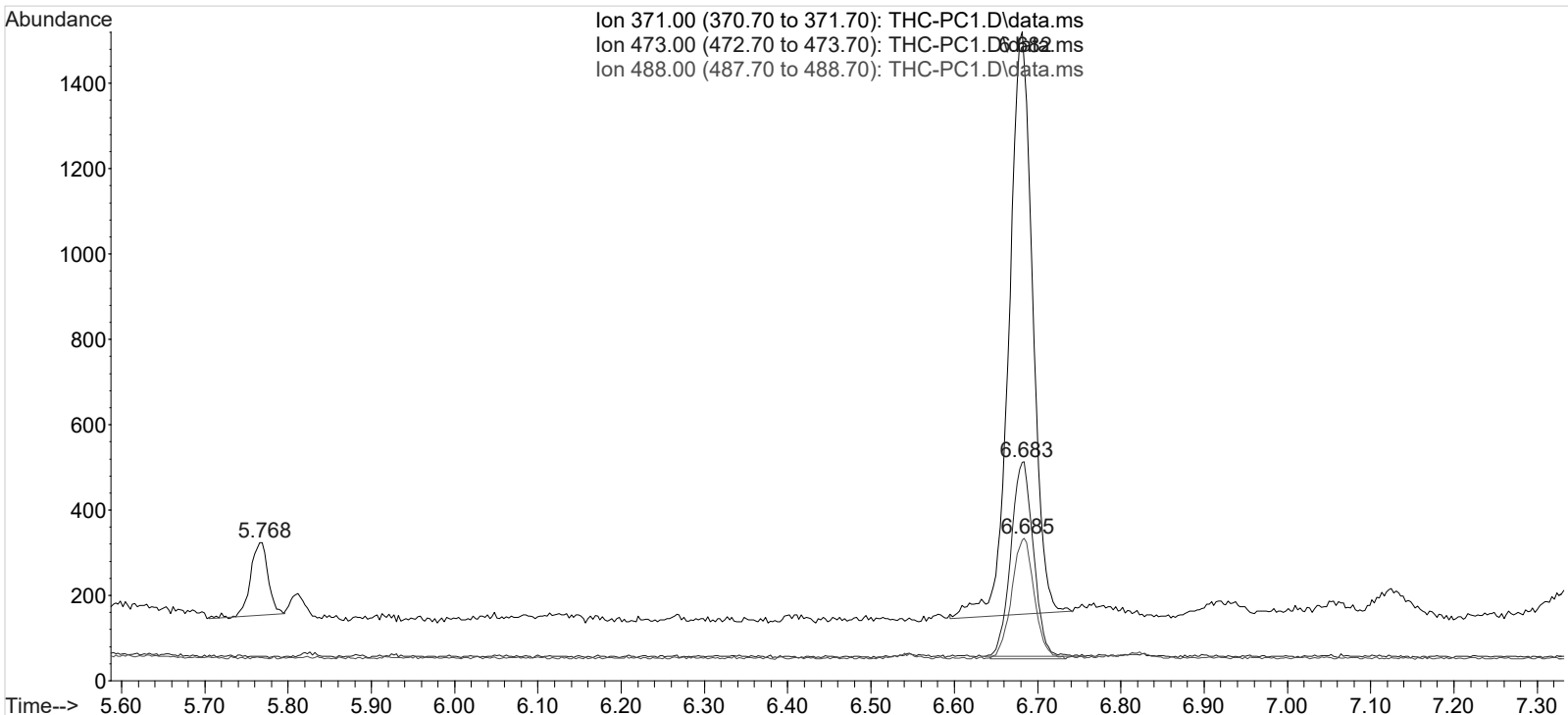
Sum of corrected areas: 8551

Signal : EIC Ion 488.00 (487.70 to 488.70): THC-PC1.D\data.ms

peak #	R.T. min	first scan	max scan	last scan	PK TY	peak height	corr. area	corr. % max.	% of total
1	6.685	368	382	399	BV 2	280	5304	100.00%	100.000%

Sum of corrected areas: 5304

TOX.M Fri Jul 27 10:35:22 2018



Area Percent Report

CS

Data Path : C:\My Files\cshrum\Desktop\Consolidated\Data\URINE\AM 3 WORKLIST 2554\  
Data File : THC-PC2.D  
Acq On : 26 Jul 2018 18:13  
Operator : ISP\datastor  
Sample : Spiked Positive c-THC Control  
Misc : c-THC lot # 0497429 in Negative Lot # POC112116; Worklist AM #3; Worklist 2554  
ALS Vial : 32 Sample Multiplier: 1

Integration Parameters: events.e  
Integrator: ChemStation

Method : C:\gcms\1\methods\TOX.M  
Title :

Signal : EIC Ion 371.00 (370.70 to 371.70): THC-PC2.D\data.ms

peak #	R.T. min	first scan	max scan	last scan	PK TY	peak height	corr. area	corr. % max.	% of total
1	6.681	333	381	398	PV	1485	28401	100.00%	100.000%

Sum of corrected areas: 28401

Signal : EIC Ion 473.00 (472.70 to 473.70): THC-PC2.D\data.ms

peak #	R.T. min	first scan	max scan	last scan	PK TY	peak height	corr. area	corr. % max.	% of total
1	6.682	364	381	401	BB	503	9310	100.00%	100.000%

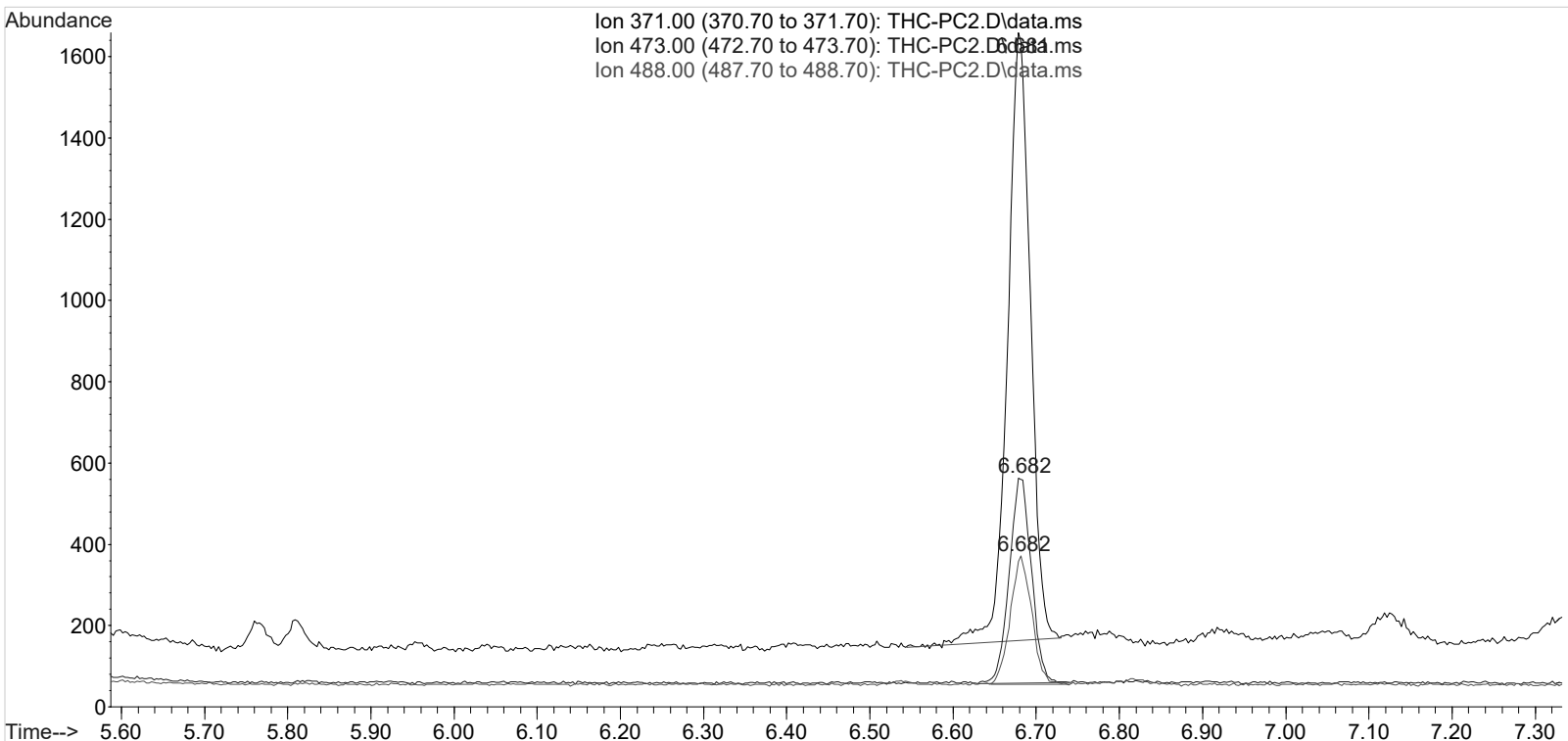
Sum of corrected areas: 9310

Signal : EIC Ion 488.00 (487.70 to 488.70): THC-PC2.D\data.ms

peak #	R.T. min	first scan	max scan	last scan	PK TY	peak height	corr. area	corr. % max.	% of total
1	6.682	369	381	401	BV	313	5641	100.00%	100.000%

Sum of corrected areas: 5641

TOX.M Fri Jul 27 10:36:17 2018



Area Percent Report

CS

Data Path : C:\My Files\cshrum\Desktop\Consolidated\Data\URINE\AM 3 WORKLIST 2554\  
Data File : THC-C3.D  
Acq On : 28 Jul 2018 12:52  
Operator : ISP\datastor  
Sample : Biorad C3 Control  
Misc : C3 Lot # 68440; Worklist 2554  
ALS Vial : 33 Sample Multiplier: 1

This sample failed to inject and was reinjected.

CS

Integration Parameters: events.e  
Integrator: ChemStation

Method : C:\gcms\1\methods\TOX.M  
Title :

Signal : EIC Ion 371.00 (370.70 to 371.70): THC-C3.D\data.ms

peak #	R.T. min	first scan	max scan	last scan	PK TY	peak height	corr. area	corr. % max.	% of total
1	6.680	344	380	395	PV	562	11696	100.00%	100.000%

Sum of corrected areas: 11696

Signal : EIC Ion 473.00 (472.70 to 473.70): THC-C3.D\data.ms

peak #	R.T. min	first scan	max scan	last scan	PK TY	peak height	corr. area	corr. % max.	% of total
1	6.680	351	381	402	BB	178	3450	100.00%	100.000%

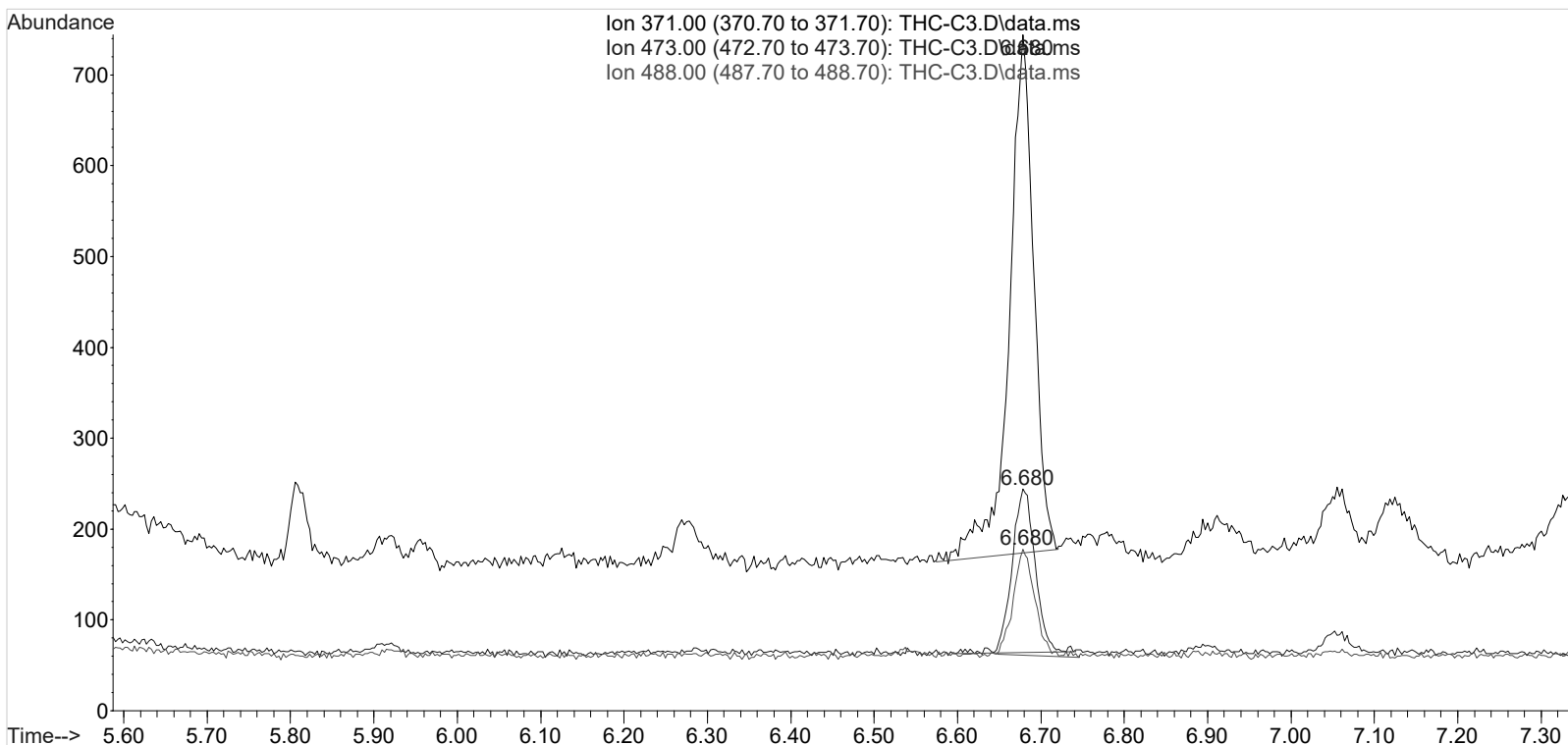
Sum of corrected areas: 3450

Signal : EIC Ion 488.00 (487.70 to 488.70): THC-C3.D\data.ms

peak #	R.T. min	first scan	max scan	last scan	PK TY	peak height	corr. area	corr. % max.	% of total
1	6.680	369	381	404	BB	115	2095	100.00%	100.000%

Sum of corrected areas: 2095

TOX.M Mon Jul 30 13:40:08 2018



## 2.4.4 Carboxy-THC QC Calculations (AM #3)<sub>cs</sub>

Run Date: **7/26/2018**

Case Calculations:  
Lab Case #: **BRC3 68440**

EIC Ion 371 Corr. Area:	11696	473:371 Ratio:	<b>0.295</b>
EIC Ion 473 Corr. Area:	3450	488:371 Ratio:	<b>0.179</b>
EIC Ion 488 Corr. Area:	2095		

### Quality Control Calculations:

Retention Time acceptable range: **6.378** to **6.573**

	<u>1st ctrl</u>	<u>2nd ctrl</u>
EIC Ion 371 Corr. Area:	26740	28401
EIC Ion 473 Corr. Area:	8551	9310
EIC Ion 488 Corr. Area:	5304	5641

Approximate minimum corrected area of 371 ion: ~ **5348**

Ratio of 473:371				
1st ctrl	<b><u>0.320</u></b>	2nd ctrl	<b><u>0.328</u></b>	avg. <b>0.324</b>
Accepted Range (+/- 20%) <b><u>0.259 - 0.389</u></b>				

Ratio of 488:371				
1st ctrl	<b><u>0.198</u></b>	2nd ctrl	<b><u>0.199</u></b>	avg. <b>0.198</b>
Accepted Range (+/- 20%) <b><u>0.159 - 0.238</u></b>				

Carboxy-calculation sheet  
Revision 0 effective date 10/23/13  
Issuing authority: Quality Manager