

**Worklist: 6775**

<u>LAB CASE</u>	<u>ITEM</u>	<u>ITEM TYPE</u>	<u>DESCRIPTION</u>	
M2024-1156	3	BCK	AM 25/AM 26 Blood MultiDrug/THC Screen by LC-QQQ	
M2024-1175	1	BCK	AM 25/AM 26 Blood MultiDrug/THC Screen by LC-QQQ	
M2024-1234	1	BCK	AM 25/AM 26 Blood MultiDrug/THC Screen by LC-QQQ	
M2024-1275	1	BCK	AM 25/AM 26 Blood MultiDrug/THC Screen by LC-QQQ	
M2024-1299	1	BCK	AM 25/AM 26 Blood MultiDrug/THC Screen by LC-QQQ	
M2024-1472	2	BCK	AM 25/AM 26 Blood MultiDrug/THC Screen by LC-QQQ	
P2024-0746	1	BCK	AM 25/AM 26 Blood MultiDrug/THC Screen by LC-QQQ	
P2024-0819	1	BCK	AM 25/AM 26 Blood MultiDrug/THC Screen by LC-QQQ	
P2024-0820	1	BCK	AM 25/AM 26 Blood MultiDrug/THC Screen by LC-QQQ	
P2024-0870	1	BCK	AM 25/AM 26 Blood MultiDrug/THC Screen by LC-QQQ	
P2024-1019	1	BCK	AM 25/AM 26 Blood MultiDrug/THC Screen by LC-QQQ	
P2024-1021	2	BCK	AM 25/AM 26 Blood MultiDrug/THC Screen by LC-QQQ	
P2024-1027	1	BCK	AM 25/AM 26 Blood MultiDrug/THC Screen by LC-QQQ	
P2024-1028	2	BCK	AM 25/AM 26 Blood MultiDrug/THC Screen by LC-QQQ	
P2024-1035	1	BCK	AM 25/AM 26 Blood MultiDrug/THC Screen by LC-QQQ	
P2024-1036	1	BCK	AM 25/AM 26 Blood MultiDrug/THC Screen by LC-QQQ	
P2024-1052	1	BCK	AM 25/AM 26 Blood MultiDrug/THC Screen by LC-QQQ	
P2024-1053	1	BCK	AM 25/AM 26 Blood MultiDrug/THC Screen by LC-QQQ	
P2024-1055	1	BCK	AM 25/AM 26 Blood MultiDrug/THC Screen by LC-QQQ	
P2024-1056	1	BCK	AM 25/AM 26 Blood MultiDrug/THC Screen by LC-QQQ	
P2024-1083	1	BCK	AM 25/AM 26 Blood MultiDrug/THC Screen by LC-QQQ	



















	1	2	3	4	5	6
a	cal 1ng	QC 2	P2024-0746-1	P2024-1035-1	P2024-1088-1	
b	cal 3 ng	NEG CTRL	P2024-0819-1	P2024-1036-1	P2024-1090-1	
c	cal 5 ng	M2024-1156-3	P2024-0820-1	P2024-1052-1	P2024-1095-1	
d	cal 10ng	M2024-1175-1	P2024-0870-1	P2024-1053-1	P2024-1099-1	
e	cal 25 ng	M2024-1234-1	P2024-1019-1	P2024-1055-1	P2024-1112-1	
f	cal 50 ng	M2024-1275-1	P2024-1021-2	P2024-1056-1	P2024-1113-1	
g	cal 100 ng	M2024-1299-1	P2024-1027-1	P2024-1083-1	P2024-1115-1	
h	QC 1	M2024-1472-2	P2024-1028-2	P2024-1087-1		









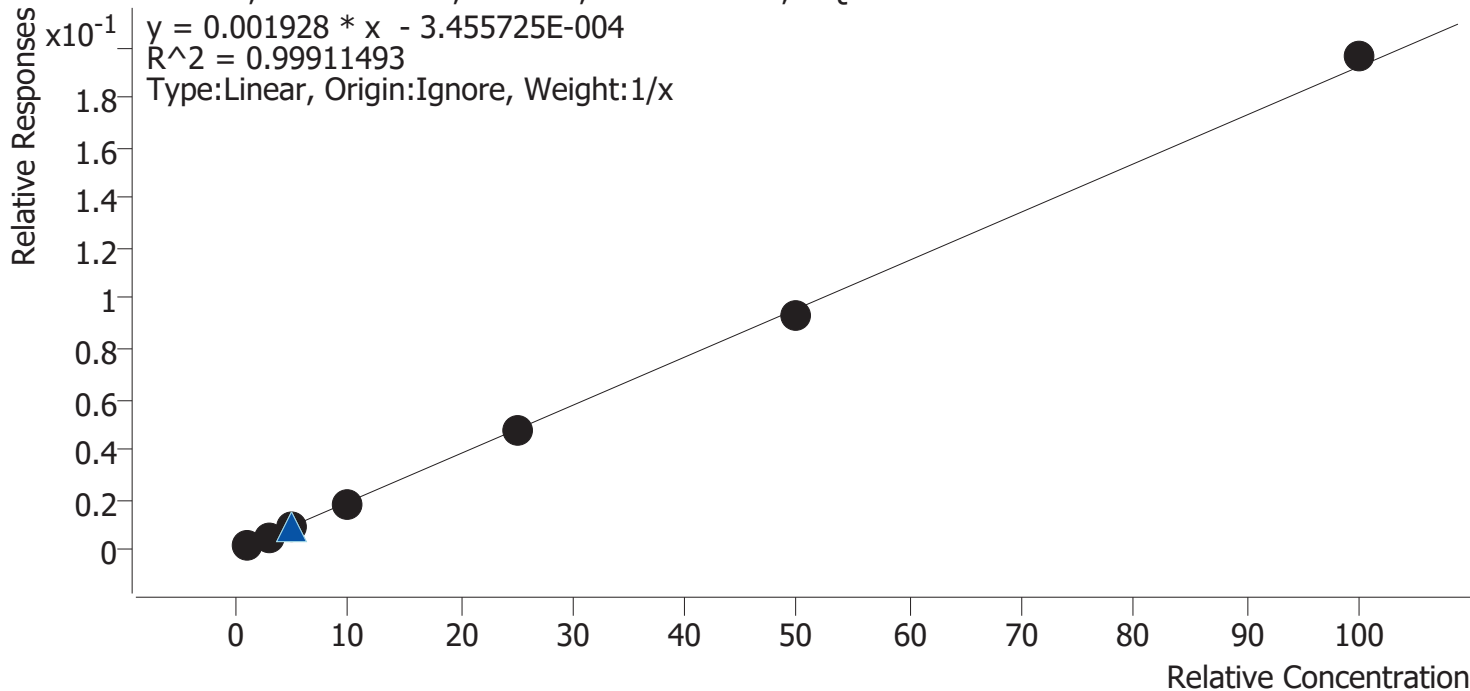




# AM #26 Cannabinoids Screen Calibration Curve Report

**Batch results** D:\MassHunter\Data\2024\AM 25 26\041624 AM 25 26 CS\QuantResults\AM 26.batch.bin  
**Last Cal. Update** 4/18/2024 1:51 PM  
**Analyst Name** ISP\datastor  
**Analyte** THC-OH **Internal Standard** THC-OH-D3

THC-OH - 7 Levels, 7 Levels Used, 7 Points, 7 Points Used, 2 QCs



Sample	Level	Enabled	Expected Concentration	Final Concentration	Accuracy
MJ Cal 1	1	✓	1.0	1.2	117.4
MJ Cal 2	2	✓	3.0	2.7	91.0
MJ Cal 3	3	✓	5.0	4.8	95.8
MJ Cal 4	4	✓	10.0	9.7	97.3
MJ Cal 5	5	✓	25.0	24.7	98.8
MJ Cal 6 r	6	✓	50.0	48.8	97.6
MJ Cal 7 r	7	✓	100.0	102.1	102.1



# AM #26 Cannabinoids Screen Results



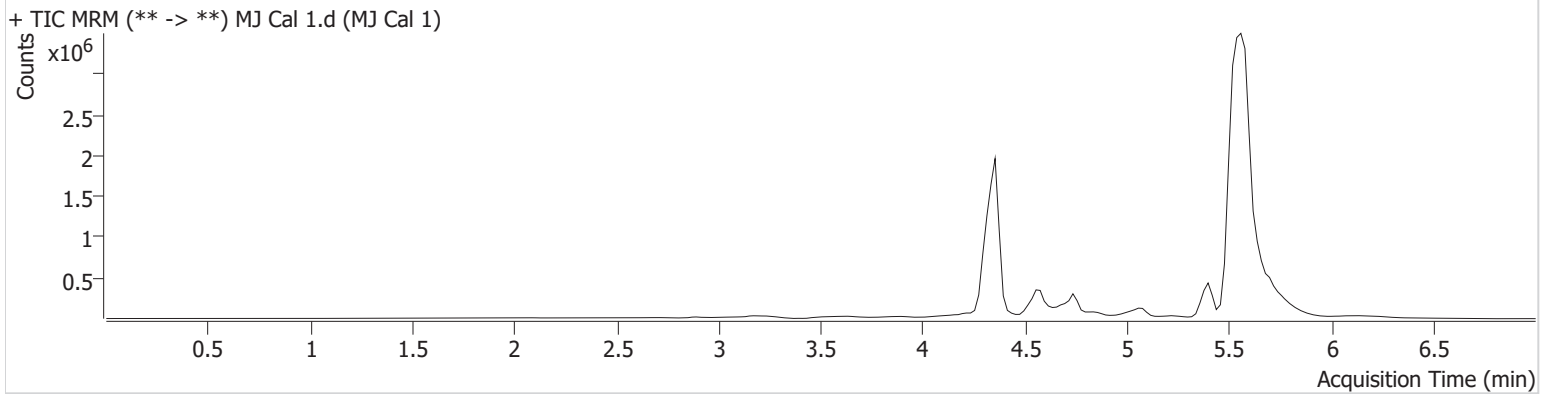
**Batch results** D:\MassHunter\Data\2024\AM 25 26\041624 AM 25 26 CS\QuantResults\AM 26.batch.bin  
**Calibration Last Update** 4/18/2024 1:51:32 PM

**Instrument** Falco (069901)  
**Type** Cal  
**Acq. Method** AM 26 THC.m  
**Sample Position** P1-A1  
**Injection Volume** 10  
**Acq. Date-Time** 4/16/2024 12:49:14 PM  
**Sample Info.**

**Data File** MJ Cal 1.d  
**Sample** MJ Cal 1  
**Operator** Celena Shrum  
**Comment**

Only drugs and concentrations listed on the laboratory report itself are appropriate to be used for interpretation purposes. Any drugs or values included in the notes but not included on the report are used by laboratory personnel to make determinations/reach conclusions within the confines of the methods.

## Sample Chromatogram



Name	RT	Resp.	ISTD Resp.	Final Conc.
THC	5.489	3186	758808	0.83 ng/ml <b>Low</b>
THC-COOH	4.596	73478	1265033	4.88 ng/ml <b>Low</b>
THC-OH	4.362	16310	8506353	1.17 ng/ml <b>Low</b>

# AM #26 Cannabinoids Screen Results



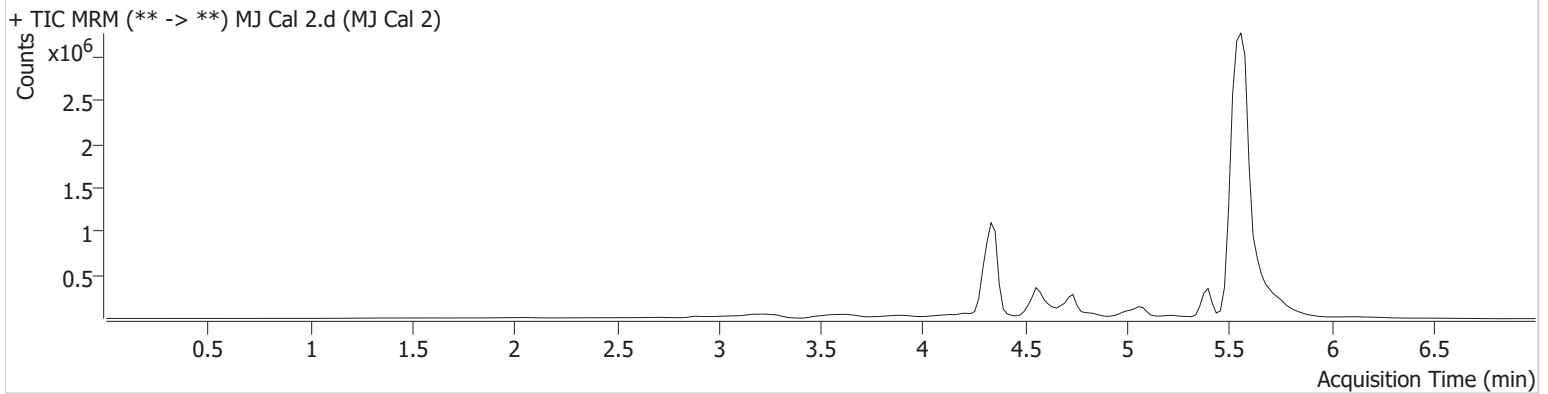
**Batch results** D:\MassHunter\Data\2024\AM 25 26\041624 AM 25 26 CS\QuantResults\AM 26.batch.bin  
**Calibration Last Update** 4/18/2024 1:51:32 PM

**Instrument** Falco (069901)  
**Type** Cal  
**Acq. Method** AM 26 THC.m  
**Sample Position** P1-B1  
**Injection Volume** 10  
**Acq. Date-Time** 4/16/2024 12:56:58 PM  
**Sample Info.**

**Data File** MJ Cal 2.d  
**Sample** MJ Cal 2  
**Operator** Celena Shrum  
**Comment**

Only drugs and concentrations listed on the laboratory report itself are appropriate to be used for interpretation purposes. Any drugs or values included in the notes but not included on the report are used by laboratory personnel to make determinations/reach conclusions within the confines of the methods.

## Sample Chromatogram



Name	RT	Resp.	ISTD Resp.	Final Conc.
THC	5.509	11087	851442	2.87 ng/ml <b>Low</b>
THC-COOH	4.596	133962	1016245	10.61 ng/ml
THC-OH	4.362	23727	4825059	2.73 ng/ml <b>Low</b>

# AM #26 Cannabinoids Screen Results



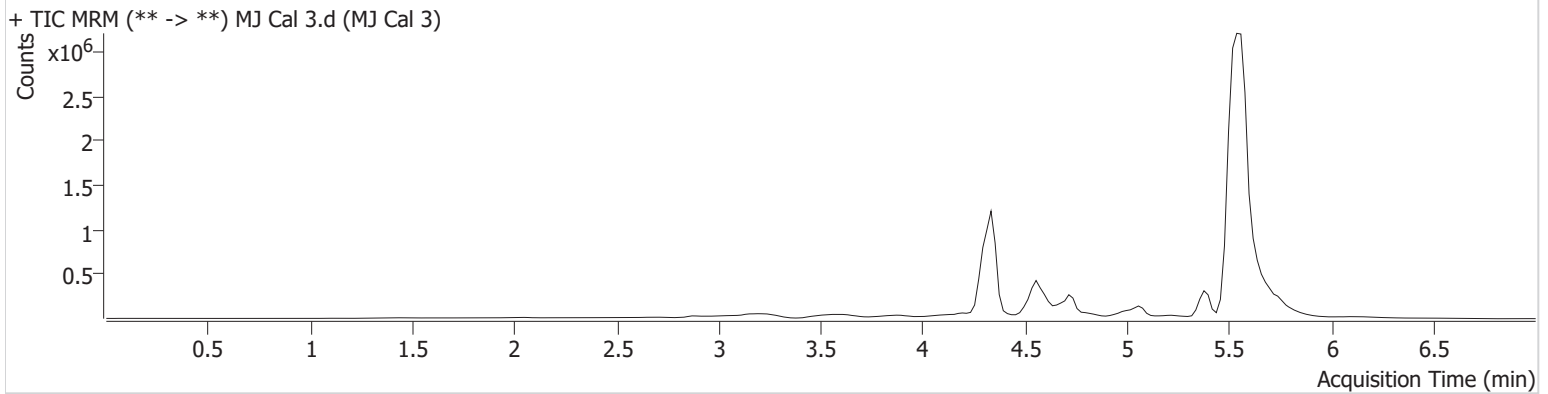
**Batch results** D:\MassHunter\Data\2024\AM 25 26\041624 AM 25 26 CS\QuantResults\AM 26.batch.bin  
**Calibration Last Update** 4/18/2024 1:51:32 PM

**Instrument** Falco (069901)  
**Type** Cal  
**Acq. Method** AM 26 THC.m  
**Sample Position** P1-C1  
**Injection Volume** 10  
**Acq. Date-Time** 4/16/2024 1:04:33 PM  
**Sample Info.**

**Data File** MJ Cal 3.d  
**Sample** MJ Cal 3  
**Operator** Celena Shrum  
**Comment**

Only drugs and concentrations listed on the laboratory report itself are appropriate to be used for interpretation purposes. Any drugs or values included in the notes but not included on the report are used by laboratory personnel to make determinations/reach conclusions within the confines of the methods.

## Sample Chromatogram



Name	RT	Resp.	ISTD Resp.	Final Conc.
THC	5.489	17713	802845	4.96 ng/ml
THC-COOH	4.596	287228	1165714	19.51 ng/ml
THC-OH	4.342	45965	5169164	4.79 ng/ml

# AM #26 Cannabinoids Screen Results



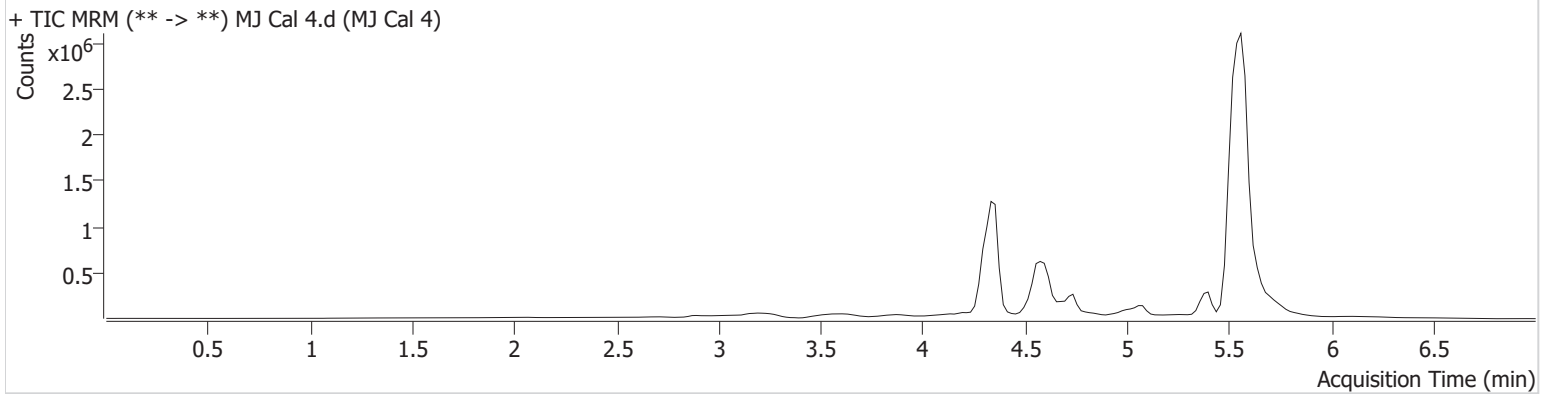
**Batch results** D:\MassHunter\Data\2024\AM 25 26\041624 AM 25 26 CS\QuantResults\AM 26.batch.bin  
**Calibration Last Update** 4/18/2024 1:51:32 PM

**Instrument** Falco (069901)  
**Type** Cal  
**Acq. Method** AM 26 THC.m  
**Sample Position** P1-D1  
**Injection Volume** 10  
**Acq. Date-Time** 4/16/2024 1:12:08 PM  
**Sample Info.**

**Data File** MJ Cal 4.d  
**Sample** MJ Cal 4  
**Operator** Celena Shrum  
**Comment**

Only drugs and concentrations listed on the laboratory report itself are appropriate to be used for interpretation purposes. Any drugs or values included in the notes but not included on the report are used by laboratory personnel to make determinations/reach conclusions within the confines of the methods.

## Sample Chromatogram



Name	RT	Resp.	ISTD Resp.	Final Conc.
THC	5.510	38290	777139	11.26 ng/ml
THC-COOH	4.596	799799	1268988	49.32 ng/ml
THC-OH	4.362	101390	5509611	9.73 ng/ml

# AM #26 Cannabinoids Screen Results



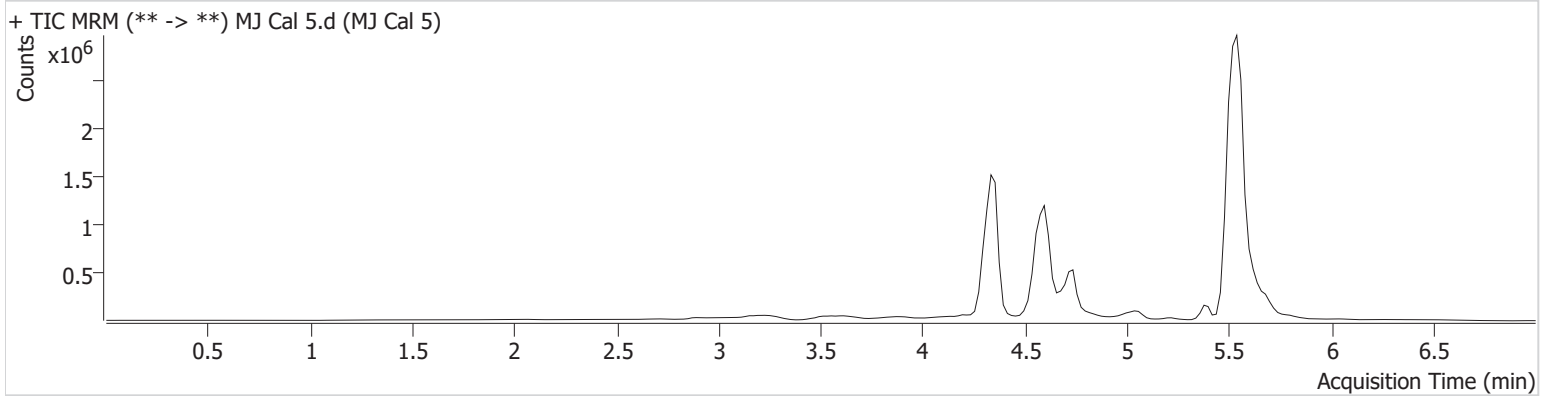
**Batch results** D:\MassHunter\Data\2024\AM 25 26\041624 AM 25 26 CS\QuantResults\AM 26.batch.bin  
**Calibration Last Update** 4/18/2024 1:51:32 PM

**Instrument** Falco (069901)  
**Type** Cal  
**Acq. Method** AM 26 THC.m  
**Sample Position** P1-E1  
**Injection Volume** 10  
**Acq. Date-Time** 4/16/2024 1:19:42 PM  
**Sample Info.**

**Data File** MJ Cal 5.d  
**Sample** MJ Cal 5  
**Operator** Celena Shrum  
**Comment**

Only drugs and concentrations listed on the laboratory report itself are appropriate to be used for interpretation purposes. Any drugs or values included in the notes but not included on the report are used by laboratory personnel to make determinations/reach conclusions within the confines of the methods.

## Sample Chromatogram



Name	RT	Resp.	ISTD Resp.	Final Conc.
THC	5.489	78917	699021	25.99 ng/ml
THC-COOH	4.596	1779500	1378933	100.60 ng/ml
THC-OH	4.362	238563	5046715	24.70 ng/ml

# AM #26 Cannabinoids Screen Results



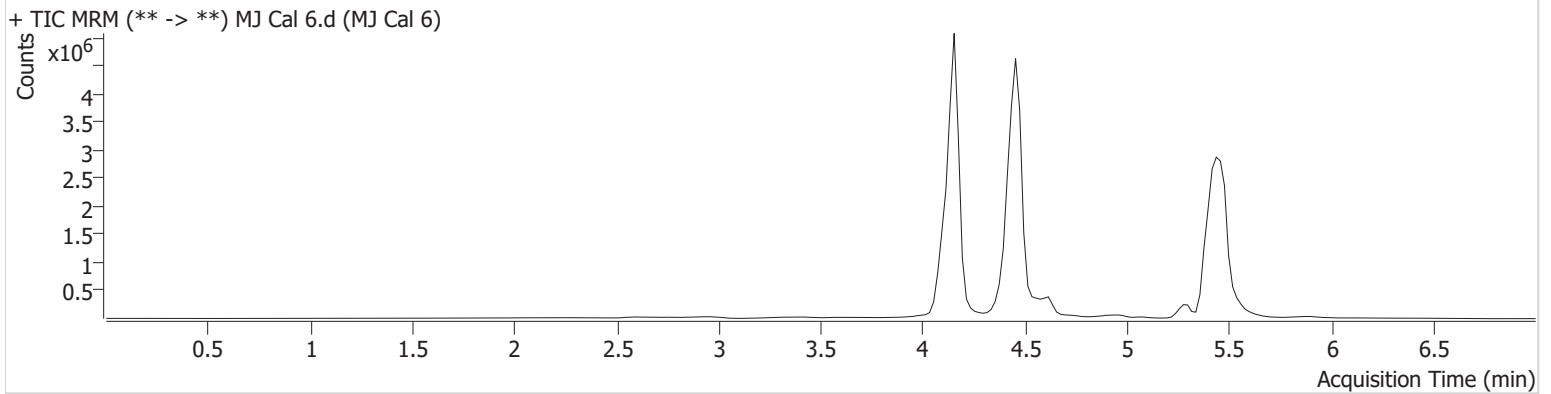
**Batch results** D:\MassHunter\Data\2024\AM 25 26\041624 AM 25 26 CS\QuantResults\AM 26.batch.bin  
**Calibration Last Update** 4/18/2024 1:51:32 PM

**Instrument** Falco (069901)  
**Type** Sample  
**Acq. Method** AM 26 THC.m  
**Sample Position** P1-F1  
**Injection Volume** 10  
**Acq. Date-Time** 4/16/2024 1:27:15 PM  
**Sample Info.**

**Data File** MJ Cal 6.d  
**Sample** MJ Cal 6  
**Operator** Celena Shrum  
**Comment**

Only drugs and concentrations listed on the laboratory report itself are appropriate to be used for interpretation purposes. Any drugs or values included in the notes but not included on the report are used by laboratory personnel to make determinations/reach conclusions within the confines of the methods.

## Sample Chromatogram



Name	RT	Resp.	ISTD Resp.	Final Conc.
THC	5.509	8900	1316463	1.42 ng/ml <b>Low</b>

# AM #26 Cannabinoids Screen Results



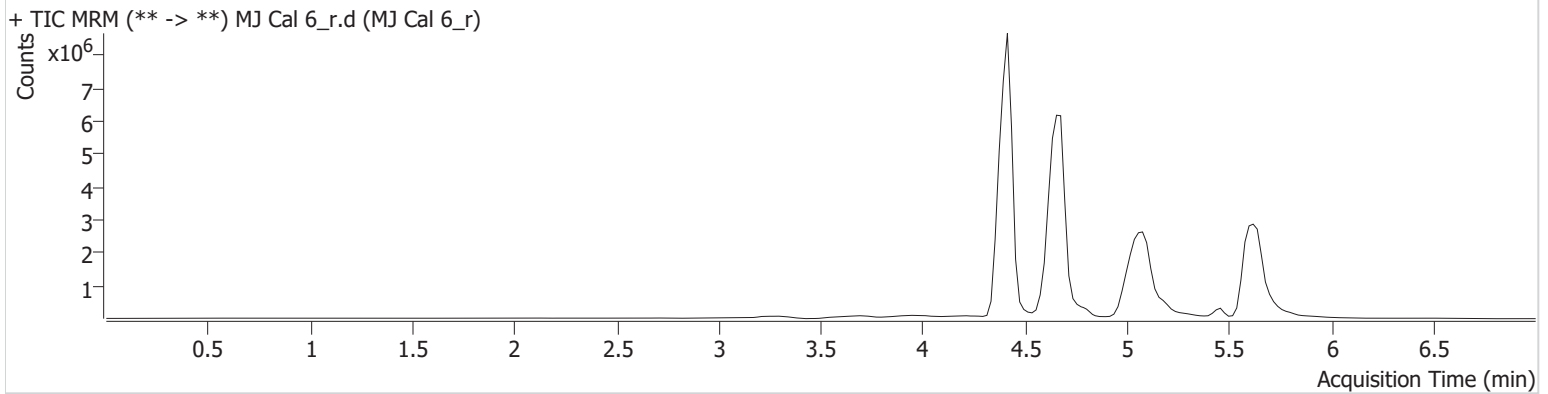
**Batch results** D:\MassHunter\Data\2024\AM 25 26\041624 AM 25 26 CS\QuantResults\AM 26.batch.bin  
**Calibration Last Update** 4/18/2024 1:51:32 PM

**Instrument** Falco (069901)  
**Type** Cal  
**Acq. Method** AM 26 THC.m  
**Sample Position** P1-F1  
**Injection Volume** 10  
**Acq. Date-Time** 4/16/2024 2:40:37 PM  
**Sample Info.**

**Data File** MJ Cal 6\_r.d  
**Sample** MJ Cal 6\_r  
**Operator** Celena Shrum  
**Comment**

Only drugs and concentrations listed on the laboratory report itself are appropriate to be used for interpretation purposes. Any drugs or values included in the notes but not included on the report are used by laboratory personnel to make determinations/reach conclusions within the confines of the methods.

## Sample Chromatogram



Name	RT	Resp.	ISTD Resp.	Final Conc.
THC	5.570	149845	602041	57.47 ng/ml
THC-COOH	4.676	9546404	7628922	97.56 ng/ml
THC-OH	4.422	2013641	21487123	48.80 ng/ml

# AM #26 Cannabinoids Screen Results



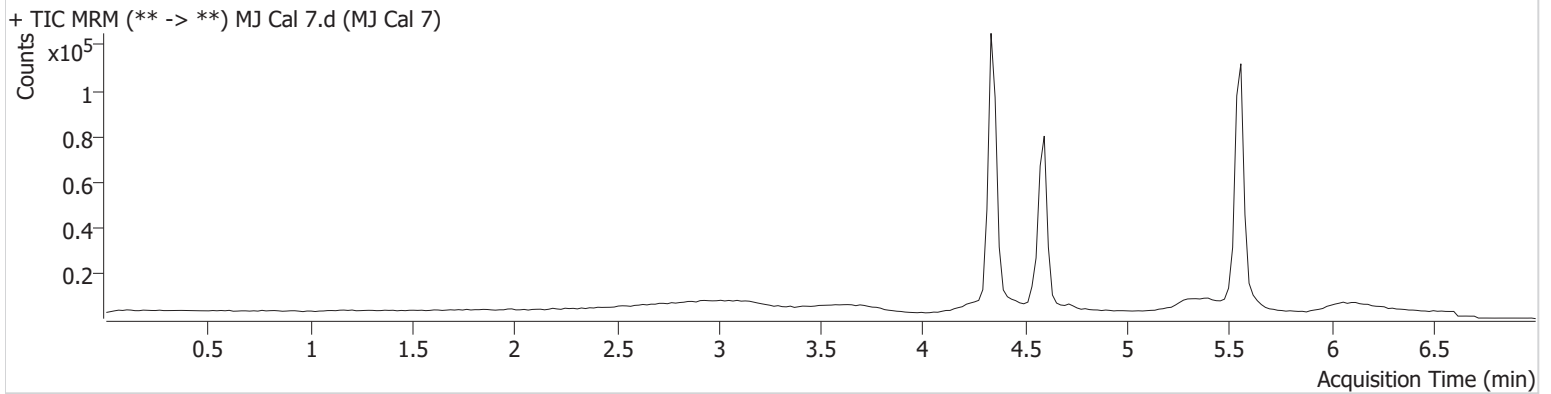
**Batch results** D:\MassHunter\Data\2024\AM 25 26\041624 AM 25 26 CS\QuantResults\AM 26.batch.bin  
**Calibration Last Update** 4/18/2024 1:51:32 PM

**Instrument** Falco (069901)  
**Type** Sample  
**Acq. Method** AM 26 THC.m  
**Sample Position** P1-G1  
**Injection Volume** 10  
**Acq. Date-Time** 4/16/2024 1:34:50 PM  
**Sample Info.**

**Data File** MJ Cal 7.d  
**Sample** MJ Cal 7  
**Operator** Celena Shrum  
**Comment**

Only drugs and concentrations listed on the laboratory report itself are appropriate to be used for interpretation purposes. Any drugs or values included in the notes but not included on the report are used by laboratory personnel to make determinations/reach conclusions within the confines of the methods.

## Sample Chromatogram



Name	RT	Resp.	ISTD Resp.	Final Conc.
THC	5.530	4767	7032	156.78 ng/ml
THC-COOH	4.596	83123	26748	241.73 ng/ml
THC-OH	4.342	25447	134741	98.15 ng/ml



# AM #26 Cannabinoids Screen Results



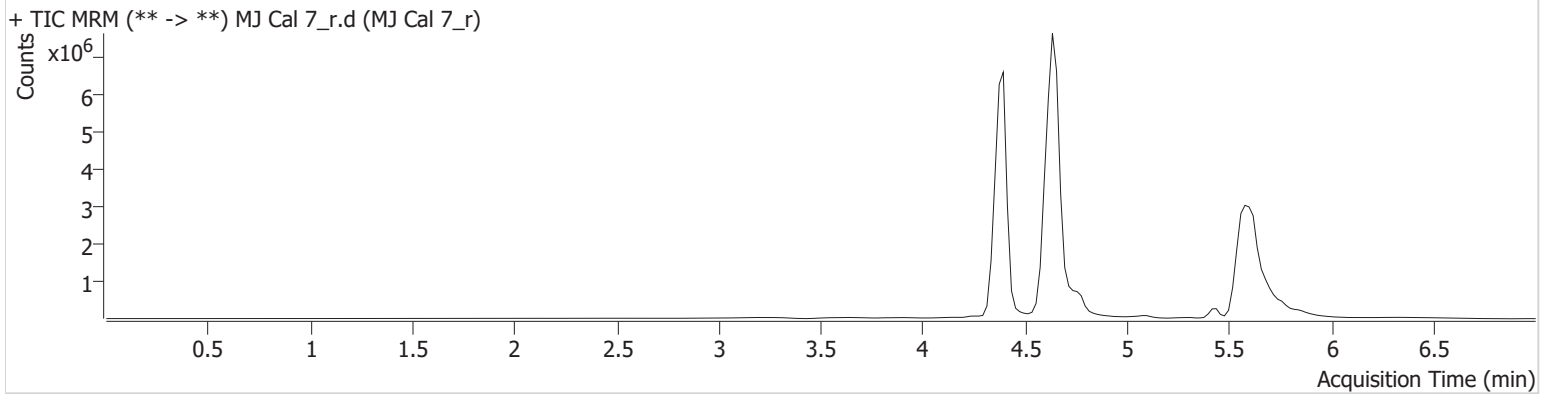
**Batch results** D:\MassHunter\Data\2024\AM 25 26\041624 AM 25 26 CS\QuantResults\AM 26.batch.bin  
**Calibration Last Update** 4/18/2024 1:51:32 PM

**Instrument** Falco (069901)  
**Type** Cal  
**Acq. Method** AM 26 THC.m  
**Sample Position** P1-G1  
**Injection Volume** 10  
**Acq. Date-Time** 4/16/2024 2:56:36 PM  
**Sample Info.**

**Data File** MJ Cal 7\_r.d  
**Sample** MJ Cal 7\_r  
**Operator** Celena Shrum  
**Comment**

Only drugs and concentrations listed on the laboratory report itself are appropriate to be used for interpretation purposes. Any drugs or values included in the notes but not included on the report are used by laboratory personnel to make determinations/reach conclusions within the confines of the methods.

## Sample Chromatogram



Name	RT	Resp.	ISTD Resp.	Final Conc.
THC	5.530	270546	690003	90.62 ng/ml
THC-COOH	4.636	12905144	2968221	338.04 ng/ml
THC-OH	4.402	1964252	10000218	102.08 ng/ml