

Worklist: 7105

| <u>LAB CASE</u> | <u>ITEM</u> | <u>ITEM TYPE</u> | <u>DESCRIPTION</u>                               |   |
|-----------------|-------------|------------------|--|---|
| C2025-0499      | 1           | UCK              | AM 25/AM 26 Urine MultiDrug/THC Screen by LC-QQQ |    |
| C2025-0576      | 1           | BCK              | AM 25/AM 26 Blood MultiDrug/THC Screen by LC-QQQ |    |
| C2025-0577      | 1           | BCK              | AM 25/AM 26 Blood MultiDrug/THC Screen by LC-QQQ |    |
| C2025-0579      | 1           | BCK              | AM 25/AM 26 Blood MultiDrug/THC Screen by LC-QQQ |    |
| C2025-0582      | 1           | BCK              | AM 25/AM 26 Blood MultiDrug/THC Screen by LC-QQQ |    |
| C2025-0593      | 2           | BCK              | AM 25/AM 26 Blood MultiDrug/THC Screen by LC-QQQ |    |
| C2025-0594      | 1           | UCK              | AM 25/AM 26 Urine MultiDrug/THC Screen by LC-QQQ |    |
| C2025-0603      | 1           | BCK              | AM 25/AM 26 Blood MultiDrug/THC Screen by LC-QQQ |    |
| C2025-0608      | 1           | BCK              | AM 25/AM 26 Blood MultiDrug/THC Screen by LC-QQQ |    |
| C2025-0611      | 2           | BCK              | AM 25/AM 26 Blood MultiDrug/THC Screen by LC-QQQ |   |
| C2025-0613      | 1           | BCK              | AM 25/AM 26 Blood MultiDrug/THC Screen by LC-QQQ |  |
| C2025-0615      | 1           | BCK              | AM 25/AM 26 Blood MultiDrug/THC Screen by LC-QQQ |  |
| C2025-0631      | 3           | BCK              | AM 25/AM 26 Blood MultiDrug/THC Screen by LC-QQQ |  |
| C2025-0635      | 1           | BCK              | AM 25/AM 26 Blood MultiDrug/THC Screen by LC-QQQ |  |
| C2025-0636      | 1           | BCK              | AM 25/AM 26 Blood MultiDrug/THC Screen by LC-QQQ |  |
| C2025-0637      | 1           | BCK              | AM 25/AM 26 Blood MultiDrug/THC Screen by LC-QQQ |  |
| C2025-0638      | 2           | BCK              | AM 25/AM 26 Blood MultiDrug/THC Screen by LC-QQQ |  |
| C2025-0660      | 1           | BCK              | AM 25/AM 26 Blood MultiDrug/THC Screen by LC-QQQ |  |
| C2025-0670      | 1           | BCK              | AM 25/AM 26 Blood MultiDrug/THC Screen by LC-QQQ |  |
| M2024-4699      | 1           | BCK              | AM 25/AM 26 Blood MultiDrug/THC Screen by LC-QQQ |  |

Web

## AM# 25: Multi-Drug Screen in Blood and Urine by LC-MS/MS

Extraction Date: 4/22/2025

Plate lot#: 240925

Mobile phase A: 10mM Amm Form

Blank Blood Lot: 25A52551

LCMS-QQQ ID: 69679

Analyst: Mikel Buffaloe

Plate Retest Date: 3/25/25

Mobile phase B: 0.1% Formic Acid in MeOH

Blank Urine Lot: 1224

Column: Agilent Phenyl Hexyl (4.6x50mm, 2.7um)

### Pre-Analytic:

- ☒ 1. Check levels of mobile phases and needle wash refill as needed. Ensure waste is not full.
- ☒ 2. Ensure correct column is installed and begin mobile phase flow allow to equilibrate ~ 30 minutes.

### Analytic:

- ☒ 1. Remove standards, plate, controls, and samples from cold storage. Allow to reach room temperature.
- ☒ 2. Using a calibrated pipette, pipette **250µL blood and urine** (if applicable) into wells of analytical (standards) plate.  
**Pipette ID: 390993** Urine samples add 40µL BG Turbo, and 100µL Instant Buffer I. Place on plate shaker for 5 minutes
- ☒ 3. Pipette **250µL 0.5 M ammonium hydroxide** in wells of analytical plate.
- ☒ 4. Place on shaking incubator at ambient temp., 900rpm for 15 minutes.
- ☒ 5. Transfer **200-450µL of blood+base and urine+base (if applicable)** mixture to corresponding wells of SLE+ plate.  
Amount transferred: 250
- ☒ 6. Apply positive pressure for approx. 10-15 seconds (or until no liquid remains on top of sorbent).  
**(Load at 85-100 PSI- Selector to the right).**
- ☒ 7. Wait 5 minutes.
- ☒ 8. Add **900uL ethyl acetate**.
- ☒ 9. Wait 5 minutes.
- ☒ 10. Apply positive pressure for approx. 15 seconds. **(10-15 PSI- Selector to the left).**
- ☒ 11. Add **900uL ethyl acetate**.
- ☒ 12. Wait 5 minutes.
- ☒ 13. Apply positive pressure for approx. 15 seconds. **(10-15 PSI- Selector to the left).**
- ☒ 14. Remove plate containing eluate. Place on SPE Dry and evaporate to dryness at approx. 35°C. ☒ If run contains urine or at the analyst's discretion, add 50µL 1% HCl in MeOH to wells and place plate cover on plate before drying (optional). SPE Dry ID: 75401
- ☒ 15. Reconstitute in **100µL 20% LC MeOH** and heat seal plate with foil. Place in autosampler and run worklist.

### Post-Analytic

- ☒ 1. Open quantitation software and create a new quantitation batch.
- ☒ 2. Make necessary changes to integration limits
- ☒ 3. Evaluate samples, S/N of primary transition >5 and S/N of secondary transition >3 or evaluation of peak symmetry and resolution. Within +/- 2% or 0.1 min RT of administrative control. Calculated concentration of 5 or greater or 2-5 for discretionary range.
- ☒ 4. Did all QCs pass for each analyte? If no, describe issue in comments (below).
- ☒ 5. Central File Packet to include: LIMS Worklist, Method Checklist, Calibration and Control Reports

### COMMENTS:

External controls (lot B33125 and U42225) are included in run.

Internal urine control was injected 4/23/25 due to it being left off the instrument worklist.

*Gabapentin was not evaluated in this run, due to poor response on the calibrator.*

*Case 2025-0499-1 was submitted as a urine kit, but a blood tube was also included in the kit. Both the urine and blood were tested.*

WAB

|   | 1                      | 2                | 3      | 4          | 5                      | 6 | 7 | 8 | 9 | 10 | 11 | 12 |
|---|------------------------|------------------|--------|------------|------------------------|---|---|---|---|----|----|----|
| A | cal 1                  | neg blood        | 0582-1 | 0635-1     | external urine control |   |   |   |   |    |    |    |
| B |                        | external control | 0593-2 | 0636-1     | 0499-1                 |   |   |   |   |    |    |    |
| C | internal urine control | 0576-1           | 0603-1 | 0637-1     | 0499-1.2               |   |   |   |   |    |    |    |
| D |                        | 0577-1           | 0608-1 | 0638-2     |                        |   |   |   |   |    |    |    |
| E |                        | 0579-1           | 0611-2 | 0660-1     |                        |   |   |   |   |    |    |    |
| F | 0594-1                 |                  | 0613-1 | 0670-1     |                        |   |   |   |   |    |    |    |
| G |                        |                  | 0615-1 | M2024-4699 |                        |   |   |   |   |    |    |    |
| H |                        |                  | 0631-3 | Neg urine  |                        |   |   |   |   |    |    |    |

C2025-\_\_\_\_-\_\_

plate position 2



Idaho State Police  
Forensic Services

Web

**AM #25 Multidrug Screen and AM #28 Confirmation  
Multidrug Control Prep Sheet**

**Methanol External Control Working Solution (Lot: WS33125)**

50 µL 1mg/ml Methamphetamine, Codeine, and Midazolam in ~4850 µL MeOH

*Approximate concentration 10000ng/ml of each compound*

| <i>Component</i> | <i>Source</i>  | <i>Source Lot Number</i> | <i>Expiration Date</i> |
|------------------|----------------|--------------------------|------------------------|
| Methamphetamine  | Cerilliant     | FE03132001               | 7/1/2025               |
| Codeine          | Cerilliant     | FE03012215               | 10/1/2027              |
| Midazolam        | Cerilliant     | FE12282101               | 1/1/2027               |
|                  |                |                          |                        |
| Prepared:        | 3/31/2025      |                          |                        |
| Expires:         | 07/1/2025      |                          |                        |
| Prepared By:     | Mikel Buffaloe |                          |                        |

**Urine External Control Solution**

250 ul of methanol external control working solution to 2250 ul of urine.

*Approximately 1000 ng/ml of each compound*

| <i>Negative urine source and lot number</i> | <i>Date prepared</i> | <i>Expiration</i> | <i>Lot number</i> | <i>Prepared by</i> | <i>Out of use</i> |
|---|----------------------|-------------------|-------------------|--------------------|-------------------|
| 1224  | 4/22/2025            | 7/1/2025          | U42225            | Mikel Buffaloe     |                   |
|   |                      |                   |                   |                    |                   |
|   |                      |                   |                   |                    |                   |

**Blood External Control Solution**

50 ul of methanol external control working solution to 4950 ul of blood.

*Approximately 100ng/ml of each compound*

| <i>Negative blood source and lot number</i> | <i>Date prepared</i> | <i>Expiration</i> | <i>Lot number</i> | <i>Prepared by</i> | <i>Out of use</i> |
|---|----------------------|-------------------|-------------------|--------------------|-------------------|
| Lampire 25A52551                            | 3/31/2025            | 7/1/2025          | B33125            | Mikel Buffaloe     |                   |

MB

# AM #25 Multi-Drug Screen. Results

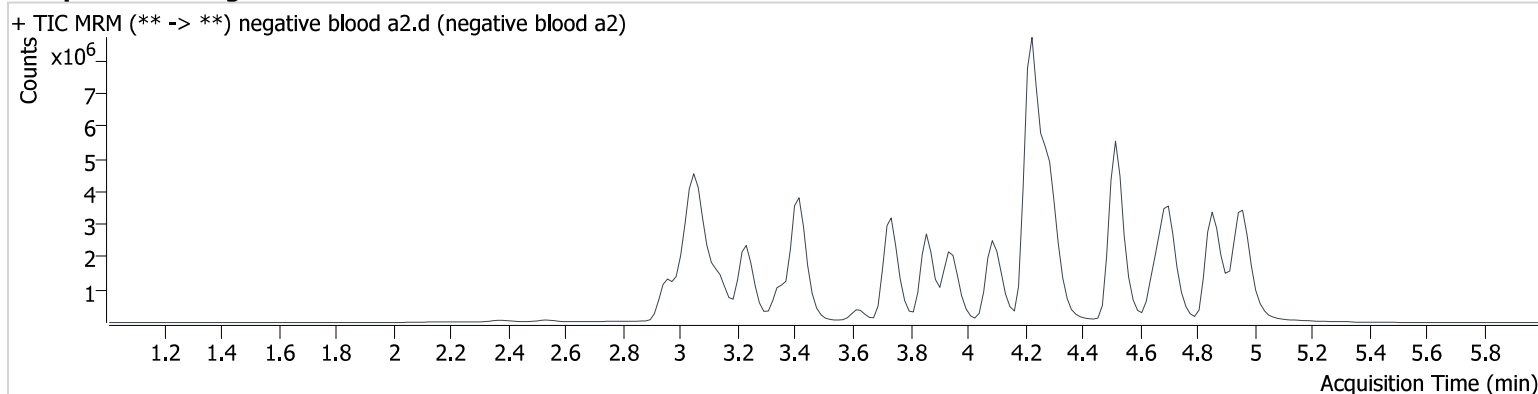
**Batch results** D:\MassHunter\Data\2025\am 25 - 26\042225\QuantResults\am25.batch.bin  
**Calibration Last Update** 4/23/2025 9:20:39 AM

**Instrument** 69679  
**Type** Sample  
**Acq. Method** mds 4125.m  
**Sample Position** P2-A2  
**Injection Volume** 2.5  
**Acq. Date-Time** 4/22/2025 12:20:58 PM  
**Sample Info.**

**Data File** negative blood a2.d  
**Sample** negative blood a2  
**Operator** Mikel Buffaloe  
**Comment**

Only drugs and concentrations listed on the laboratory report itself are appropriate to be used for interpretation purposes. Any drugs or values included in the notes but not included on the report are used by laboratory personnel to make determinations/reach conclusions within the confines of the methods.

## Sample Chromatogram



MB

# AM #25 Multi-Drug Screen. Results

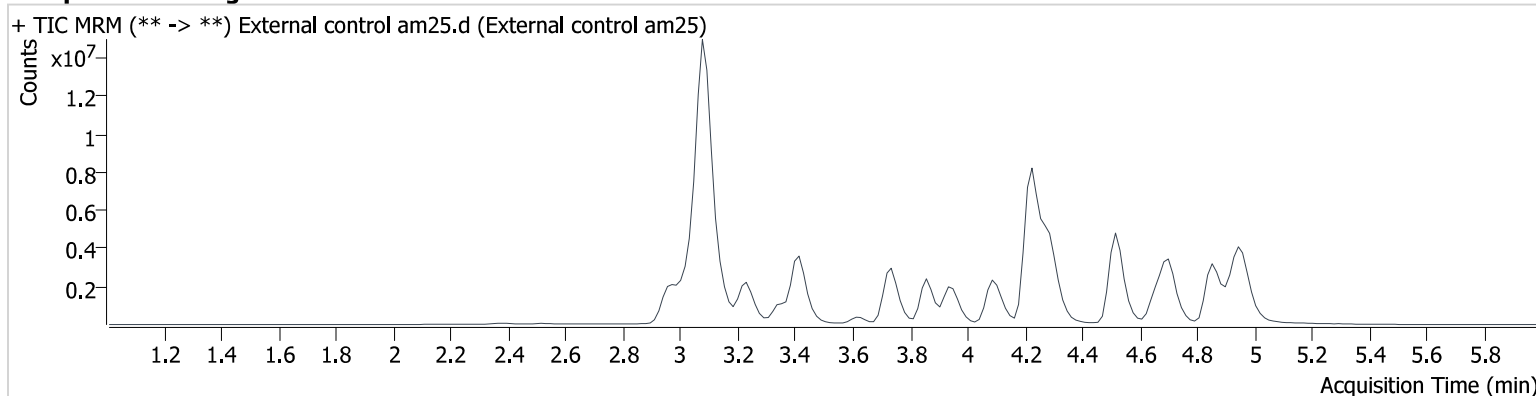
**Batch results** D:\MassHunter\Data\2025\am 25 - 26\042225\QuantResults\am25.batch.bin  
**Calibration Last Update** 4/23/2025 9:20:39 AM

**Instrument** 69679  
**Type** Sample  
**Acq. Method** mds 4125.m  
**Sample Position** P2-B2  
**Injection Volume** 2.5  
**Acq. Date-Time** 4/22/2025 12:27:52 PM  
**Sample Info.**

**Data File** External control am25.d  
**Sample** External control am25  
**Operator** Mikel Buffaloe  
**Comment**

Only drugs and concentrations listed on the laboratory report itself are appropriate to be used for interpretation purposes. Any drugs or values included in the notes but not included on the report are used by laboratory personnel to make determinations/reach conclusions within the confines of the methods.

## Sample Chromatogram



| Name            | RT    | Resp.   | S/N    | S/N       | ISTD Resp. | Calc. Conc. |
|-----------------|-------|---------|--------|-----------|------------|-------------|
| Codeine         | 2.972 | 1367441 | 7476.4 | 1531323.1 | 3642957    | 79.072      |
| Methamphetamine | 3.089 | 9066483 | ∞      | ∞         | 10794166   | 51.119      |
| Midazolam       | 4.933 | 2269520 | 944.7  | 710572.6  | 1207100    | 80.035      |

MB

# AM #25 Multi-Drug Screen. Results

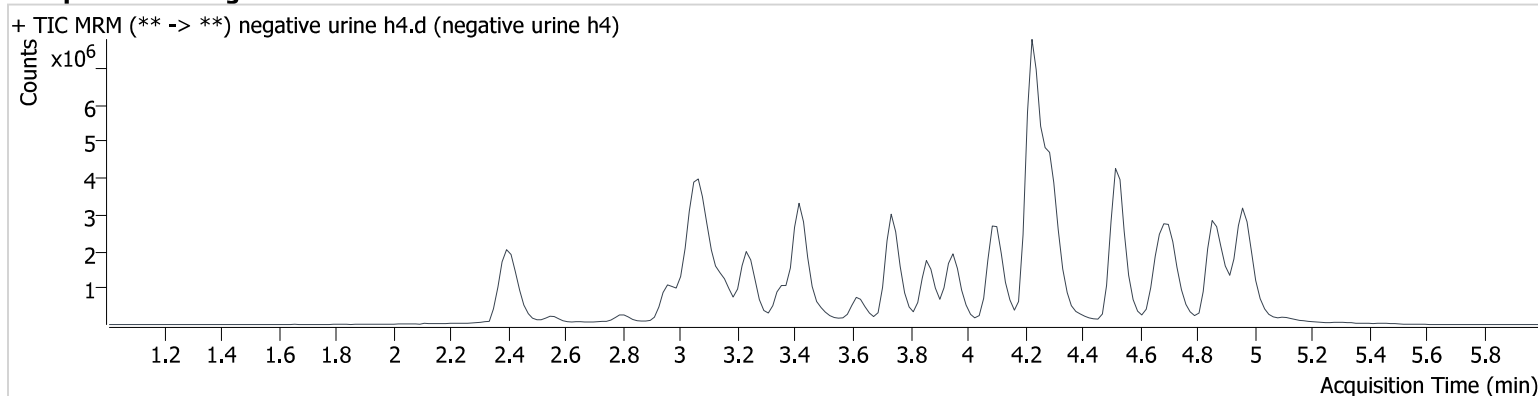
**Batch results** D:\MassHunter\Data\2025\am 25 - 26\042225\QuantResults\am25.batch.bin  
**Calibration Last Update** 4/23/2025 9:20:39 AM

**Instrument** 69679  
**Type** Sample  
**Acq. Method** mds 4125.m  
**Sample Position** P2-H4  
**Injection Volume** 2.5  
**Acq. Date-Time** 4/22/2025 2:49:21 PM  
**Sample Info.**

**Data File** negative urine h4.d  
**Sample** negative urine h4  
**Operator** Mikel Buffaloe  
**Comment**

Only drugs and concentrations listed on the laboratory report itself are appropriate to be used for interpretation purposes. Any drugs or values included in the notes but not included on the report are used by laboratory personnel to make determinations/reach conclusions within the confines of the methods.

## Sample Chromatogram



Web

# AM #25 Multi-Drug Screen. Results

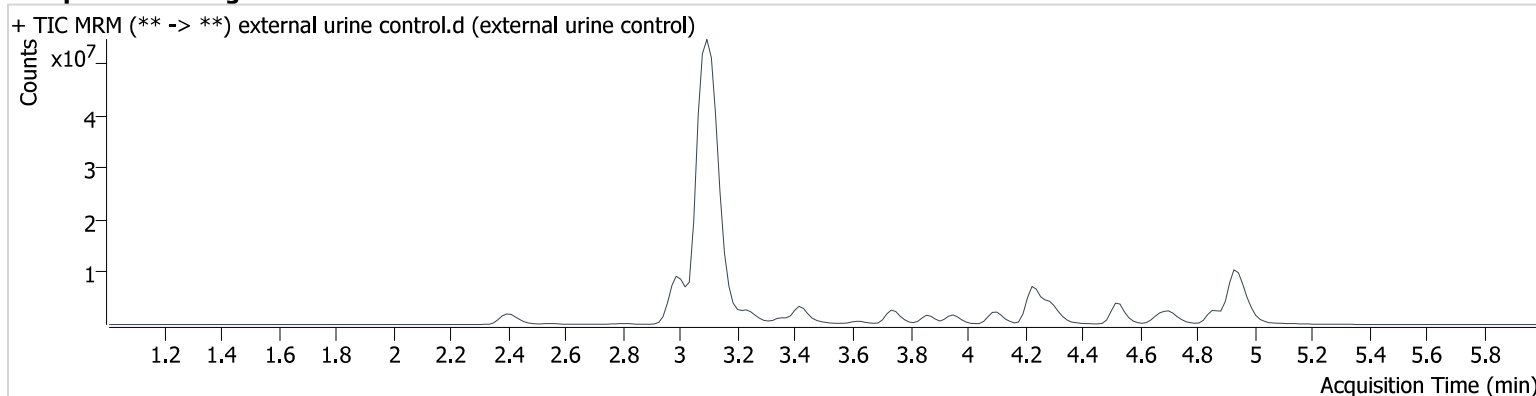
**Batch results** D:\MassHunter\Data\2025\am 25 - 26\042225\QuantResults\am25.batch.bin  
**Calibration Last Update** 4/23/2025 9:20:39 AM

**Instrument** 69679  
**Type** Sample  
**Acq. Method** mds 4125.m  
**Sample Position** P2-A5  
**Injection Volume** 2.5  
**Acq. Date-Time** 4/22/2025 2:56:05 PM  
**Sample Info.**

**Data File** external urine control.d  
**Sample** external urine control  
**Operator** Mikel Buffaloe  
**Comment**

Only drugs and concentrations listed on the laboratory report itself are appropriate to be used for interpretation purposes. Any drugs or values included in the notes but not included on the report are used by laboratory personnel to make determinations/reach conclusions within the confines of the methods.

## Sample Chromatogram



| Name            | RT    | Resp.    | S/N     | S/N                         | ISTD Resp. | Calc. Conc. |
|-----------------|-------|----------|---------|-----------------------------|------------|-------------|
| Codeine         | 2.987 | 12344965 | 57621.2 | 55592.8                     | 2206384    | 1178.632    |
| Methamphetamine | 3.104 | 60512064 | ∞       | 24371261<br>35957790<br>0.0 | 7768112    | 474.084     |
| Midazolam       | 4.933 | 17129421 | 2704.3  | 596.0                       | 1542165    | 472.824     |



MB

# AM #25 Multi-Drug Screen. Results

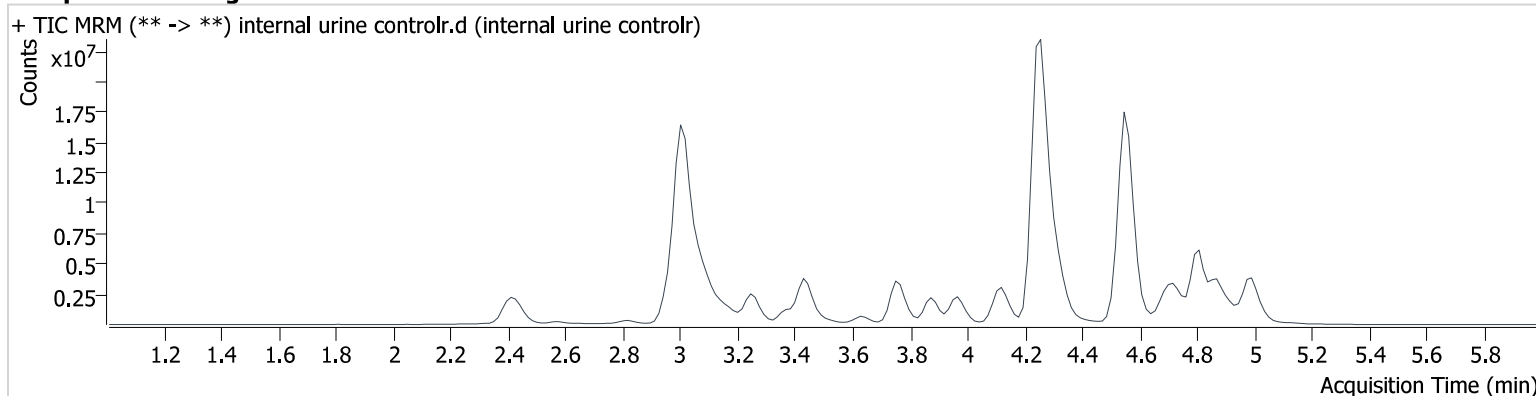
**Batch results** D:\MassHunter\Data\2025\am 25 - 26\042225\QuantResults\am25.batch.bin  
**Calibration Last Update** 4/23/2025 9:20:39 AM

**Instrument** 69679  
**Type** QC  
**Acq. Method** mds 4125.m  
**Sample Position** P2-C1  
**Injection Volume** 2.5  
**Acq. Date-Time** 4/23/2025 8:50:17 AM  
**Sample Info.**

**Data File** internal urine controlr.d  
**Sample** internal urine controlr  
**Operator** Mikel Buffaloe  
**Comment**

Only drugs and concentrations listed on the laboratory report itself are appropriate to be used for interpretation purposes. Any drugs or values included in the notes but not included on the report are used by laboratory personnel to make determinations/reach conclusions within the confines of the methods.

## Sample Chromatogram



| Name            | RT    | Resp.    | S/N     | S/N     | ISTD Resp. | Calc. Conc. |
|-----------------|-------|----------|---------|---------|------------|-------------|
| Alprazolam      | 4.814 | 11376211 | 695.2   | 718.6   | 4442830    | 121.506     |
| Amphetamine     | 3.013 | 18455262 | 1466.3  | 1021.2  | 4505294    | 95.491      |
| Codeine         | 2.957 | 2052865  | 1931.0  | 2110.2  | 3431602    | 126.018     |
| Diphenhydramine | 4.267 | 46625922 | 7142.0  | 1078.5  | 31092891   | 118.020     |
| Zolpidem        | 4.554 | 38884188 | 25577.5 | 41507.1 | 16808675   | 123.203     |

MB

# AM #25 Multi-Drug Screen. Results

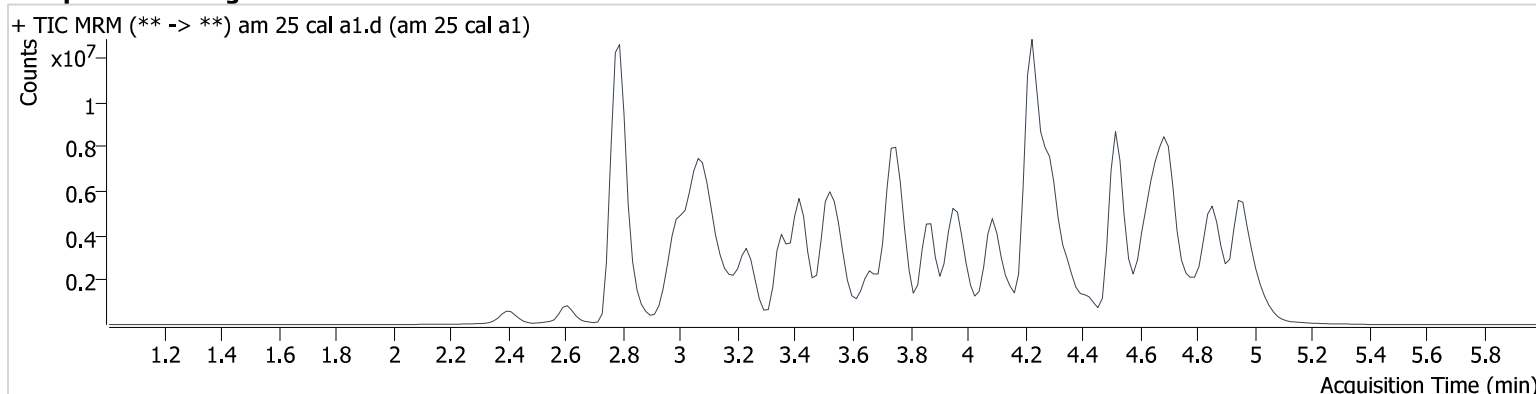
**Batch results** D:\MassHunter\Data\2025\am 25 - 26\042225\QuantResults\am25.batch.bin  
**Calibration Last Update** 4/23/2025 9:20:39 AM

**Instrument** 69679  
**Type** Cal  
**Acq. Method** mds 4125.m  
**Sample Position** P2-A1  
**Injection Volume** 2.5  
**Acq. Date-Time** 4/22/2025 12:03:29 PM  
**Sample Info.**

**Data File** am 25 cal a1.d  
**Sample** am 25 cal a1  
**Operator** Mikel Buffaloe  
**Comment**

Only drugs and concentrations listed on the laboratory report itself are appropriate to be used for interpretation purposes. Any drugs or values included in the notes but not included on the report are used by laboratory personnel to make determinations/reach conclusions within the confines of the methods.

## Sample Chromatogram



| Name                   | RT    | Resp.   | S/N       | S/N      | ISTD Resp. | Calc. Conc. |
|------------------------|-------|---------|-----------|----------|------------|-------------|
| 10-OH-Carbamazepine    | 3.866 | 1878326 | 734.9     | 154.3    | 6437244    | 10.000      |
| 6-MAM                  | 3.046 | 24930   | 148.3     | 7019.7   | 905271     | 10.000      |
| 7-aminoclonazepam      | 3.632 | 280343  | 22959.2   | 101.0    | 1463307    | 10.000      |
| 7-aminoflunitrazepam   | 3.863 | 450004  | 688.5     | 146768.0 | 1463307    | 10.000      |
| 9-Hydroxyrisperidone   | 4.101 | 2781595 | 1450391.2 | 27554.7  | 1463307    | 10.000      |
| Acetyl Fentanyl        | 4.060 | 188286  | 60.5      | 1003.9   | 4517799    | 10.000      |
| Acetyl Norfentanyl     | 2.963 | 63357   | ∞         | ∞        | 15109073   | 10.000      |
| a-hydroxyalprazolam    | 4.719 | 127253  | 470.8     | 264.8    | 6437244    | 10.000      |
| alpha-hydroxymidazolam | 4.764 | 537382  | 909.5     | 143.2    | 9338406    | 10.000      |
| alpha-PHP              | 3.990 | 1929349 | 1429.1    | 128.7    | 5101527    | 10.000      |
| alpha-PVP              | 3.684 | 1983944 | 1073.7    | 495.4    | 13875349   | 10.000      |
| Alprazolam             | 4.799 | 1356566 | 646.2     | 362.7    | 6437244    | 10.000      |
| Amitriptyline          | 4.711 | 1064072 | 209.7     | 442.5    | 4233495    | 10.000      |
| Amphetamine            | 2.998 | 2188441 | 577.5     | 733.1    | 5101527    | 10.000      |
| Benzoylecgonine        | 3.463 | 46601   | ∞         | ∞        | 212734     | 10.000      |
| Bromazolam             | 4.869 | 537492  | 3960.0    | 4394.1   | 9338406    | 10.000      |
| Brompheniramine        | 4.276 | 55972   | ∞         | ∞        | 35672832   | 10.000      |
| Buprenorphine          | 4.928 | 6654    | 2428.5    | ∞        | 1656552    | 10.000      |
| Bupropion              | 3.976 | 2277062 | 201.0     | 902.0    | 8990099    | 10.000      |
| Carbamazepine          | 4.376 | 4554786 | 1072.7    | 540.5    | 4750745    | 10.000      |
| Carisoprodol           | 4.313 | 701704  | 461.0     | 82.5     | 3873346    | 10.000      |
| Chlordiazepoxide       | 4.968 | 422101  | 272.3     | 460.3    | 9338406    | 10.000      |
| Chlorpheniramine       | 4.172 | 3188823 | ∞         | 26672.3  | 35672832   | 10.000      |
| Chlorpromazine         | 4.950 | 854630  | 279.7     | 294.7    | 4759625    | 10.000      |
| Citalopram             | 4.320 | 1540044 | 426.7     | 246597.2 | 35672832   | 10.000      |
| Clonipramine           | 4.966 | 1379941 | 686.9     | 333.0    | 2204495    | 10.000      |
| Clonazepam             | 4.644 | 641489  | 793.1     | 803.3    | 6437244    | 10.000      |
| Clonazolam             | 4.533 | 615761  | 23953.7   | 125510.4 | 6437244    | 10.000      |
| clozapine              | 4.673 | 2116414 | 1697691.0 | 439788.6 | 8871377    | 10.000      |
| Cocaethylene           | 3.953 | 2368548 | 176891.4  | 367083.5 | 13875349   | 10.000      |
| Cocaine                | 3.739 | 2873106 | 629.1     | 596.4    | 13875349   | 10.000      |
| Codeine                | 2.987 | 225524  | 1319.1    | 1191.7   | 4750745    | 10.000      |

# AM #25 Multi-Drug Screen. Results

| Name                   | RT    | Resp.   | S/N      | S/N       | ISTD Resp. | Calc. Conc. |
|------------------------|-------|---------|----------|-----------|------------|-------------|
| Cyclobenzaprine        | 4.619 | 1874304 | 913.0    | 86.7      | 4233495    | 10.000      |
| Desipramine            | 4.651 | 2625112 | 512332.5 | 532.0     | 4233495    | 10.000      |
| Dextromethorphan       | 4.280 | 1144462 | 218862.8 | 166803.6  | 5918746    | 10.000      |
| Dextrorphan            | 3.497 | 1449396 | 19016.8  | 95722.6   | 5101527    | 10.000      |
| Diazepam               | 5.061 | 489210  | 644.0    | 396.0     | 9338406    | 10.000      |
| Dihydrocodeine         | 2.849 | 598061  | 7489.6   | 6644.2    | 4750745    | 10.000      |
| Dimethyltryptamine     | 3.087 | 1135759 | 187.8    | 143.8     | 5101527    | 10.000      |
| Diphenhydramine        | 4.236 | 4532596 | 501.3    | 583.2     | 35672832   | 10.000      |
| Doxepin                | 4.418 | 1073088 | 687.9    | 78.6      | 4233495    | 10.000      |
| Doxylamine             | 3.773 | 5040781 | 264715.5 | 532.3     | 5101527    | 10.000      |
| Duloxetine             | 4.601 | 44085   | 344.2    | 40947.5   | 2204495    | 10.000      |
| EDDP                   | 4.264 | 334078  | 194.3    | 2742.9    | 1935562    | 10.000      |
| Estazolam              | 4.709 | 2448060 | 505.9    | 644.2     | 9338406    | 10.000      |
| Etizolam               | 4.779 | 82571   | 86357.3  | 125869.6  | 9338406    | 10.000      |
| Fentanyl               | 4.304 | 148624  | 74.1     | 253581.0  | 8347094    | 10.000      |
| Flualprazolam          | 4.627 | 493607  | 570.7    | 622.2     | 9338406    | 10.000      |
| Flunitrazepam          | 4.752 | 1003453 | 678379.4 | 256424.8  | 6437244    | 10.000      |
| Fluorofentanyl         | 4.348 | 109098  | 29317.0  | 202.1     | 8347094    | 10.000      |
| Fluoxetine             | 4.569 | 1337536 | 296.4    | 113.2     | 2204495    | 10.000      |
| Flurazepam             | 4.424 | 1528428 | 295.2    | 68852.0   | 1656552    | 10.000      |
| Hydrocodone            | 3.171 | 773612  | ∞        | ∞         | 4750745    | 10.000      |
| Hydromorphone          | 2.594 | 384618  | 428.3    | 119.1     | 7107900    | 10.000      |
| hydroxyzine            | 4.823 | 1427308 | 2364.5   | 753750.7  | 8871377    | 10.000      |
| Imipramine             | 4.679 | 3194865 | 576.5    | ∞         | 4233495    | 10.000      |
| Ketamine               | 3.776 | 1637106 | 20703.9  | 175.2     | 7107900    | 10.000      |
| Lamotrigine            | 3.727 | 1370930 | 1452.9   | 5381.5    | 5101527    | 10.000      |
| Levamisole             | 3.117 | 1221955 | 7096.6   | 305.1     | 13875349   | 10.000      |
| Levetiracetam          | 2.616 | 1257936 | ∞        | ∞         | 1463307    | 10.000      |
| Lorazepam              | 4.613 | 213896  | ∞        | ∞         | 6437244    | 10.000      |
| Maprotiline            | 4.710 | 794608  | 425.6    | 162.5     | 4233495    | 10.000      |
| MDA                    | 3.133 | 1544530 | 413.9    | 704.7     | 13443873   | 10.000      |
| MDEA                   | 3.362 | 2593264 | 1252.7   | 461.9     | 13443873   | 10.000      |
| MDMA                   | 3.194 | 2636535 | 10337.9  | 491.2     | 13443873   | 10.000      |
| Meperidine             | 3.759 | 1417426 | 1721.4   | 297.1     | 905271     | 10.000      |
| Meprobamate            | 3.731 | 412249  | 319.8    | 114.3     | 3873346    | 10.000      |
| Methadone              | 4.630 | 3380793 | 4696.6   | 808.1     | 4517799    | 10.000      |
| Methamphetamine        | 3.104 | 2208998 | ∞        | ∞         | 13443873   | 10.000      |
| Methocarbamol          | 3.683 | 284625  | 1413.9   | 42.6      | 4750745    | 10.000      |
| Methylphenidate        | 3.668 | 3975419 | 478.4    | 350.9     | 9601354    | 10.000      |
| Metoprolol             | 3.557 | 359666  | 652.0    | 213096.8  | 5101527    | 10.000      |
| Midazolam              | 4.933 | 343754  | 93930.5  | 641.4     | 1463307    | 10.000      |
| Mirtazapine            | 4.235 | 1406919 | 2550.8   | 1321727.9 | 1656552    | 10.000      |
| Mitragynine            | 4.439 | 210728  | 67193.0  | 130597.6  | 8347094    | 10.000      |
| Morphine               | 2.412 | 129545  | 561.3    | ∞         | 221363     | 10.000      |
| Norbuprenorphine       | 3.994 | 41013   | 9877.9   | 13054.4   | 1656552    | 10.000      |
| Nordiazepam            | 4.911 | 578982  | 11807.0  | 425.2     | 9338406    | 10.000      |
| Norfentanyl            | 3.438 | 2949475 | 4792.9   | 256.3     | 15109073   | 10.000      |
| Norhydrocodone         | 3.035 | 31611   | 28.0     | 66.8      | 4750745    | 10.000      |
| norketamine            | 3.885 | 268947  | 152.8    | 798.2     | 7107900    | 10.000      |
| Normeperidine          | 3.745 | 1376271 | 2194.6   | 522.3     | 905271     | 10.000      |
| Noroxycodone           | 2.987 | 935692  | ∞        | 966.3     | 4750745    | 10.000      |
| Nortriptyline          | 4.697 | 1018985 | 348180.5 | 329.0     | 2204495    | 10.000      |
| O-desmethyl-tramadol   | 2.991 | 3605716 | 632.8    | 165.8     | 4517799    | 10.000      |
| O-Desmethylvenlafaxine | 3.357 | 1012757 | 10723.1  | ∞         | 4517799    | 10.000      |
| Olanzapine             | 4.031 | 1041721 | 440954.9 | 1586.5    | 2204495    | 10.000      |
| Oxazepam               | 4.725 | 1245217 | ∞        | ∞         | 6437244    | 10.000      |
| Oxycodone              | 3.046 | 1434048 | 735.3    | 3875.5    | 7107900    | 10.000      |
| Oxymorphone            | 2.394 | 841623  | 1735.0   | 496.9     | 7107900    | 10.000      |
| Paroxetine             | 4.595 | 147408  | ∞        | 2753.1    | 2204495    | 10.000      |

Web

# AM #25 Multi-Drug Screen. Results

| Name            | RT    | Resp.    | S/N       | S/N      | ISTD Resp. | Calc. Conc. |
|-----------------|-------|----------|-----------|----------|------------|-------------|
| Phenazepam      | 4.840 | 1152404  | 1140.1    | 1633.1   | 9338406    | 10.000      |
| Phencyclidine   | 4.083 | 2510463  | 1148.3    | 993.8    | 4517799    | 10.000      |
| Phentermine     | 3.257 | 811292   | ∞         | 74.7     | 9601354    | 10.000      |
| Phenytoin       | 4.252 | 165930   | ∞         | 1136.0   | 114092     | 10.000      |
| primidone       | 3.516 | 8451791  | 2213.0    | 5074.3   | 15109073   | 10.000      |
| Promethazine    | 4.633 | 3308501  | 1479.6    | 298.6    | 4233495    | 10.000      |
| Pseudoephedrine | 2.798 | 43044020 | 1413.2    | 587.2    | 9601354    | 10.000      |
| Quetiapine      | 4.822 | 1598081  | 335105.9  | 2523.0   | 2204495    | 10.000      |
| Risperidone     | 4.316 | 2710216  | 681799.6  | 9342.8   | 35672832   | 10.000      |
| Sertraline      | 4.890 | 485236   | ∞         | 1636.9   | 2204495    | 10.000      |
| Sufentanil      | 4.700 | 115545   | ∞         | 65.6     | 8347094    | 10.000      |
| Tapentadol      | 3.577 | 2338361  | 451.4     | 577.3    | 7107900    | 10.000      |
| Temazepam       | 4.861 | 1757011  | 1027.2    | 193.3    | 9338406    | 10.000      |
| Topiramate      | 3.920 | 427458   | 110400.9  | 61673.6  | 186348     | 10.000      |
| Tramadol        | 3.558 | 6981783  | ∞         | 101.9    | 905271     | 10.000      |
| Trazodone       | 5.006 | 2600060  | 2101.7    | 1132.3   | 11929512   | 10.000      |
| Venlafaxine     | 3.971 | 3207312  | 15771.6   | 178.6    | 4517799    | 10.000      |
| Xylazine        | 3.485 | 174755   | ∞         | ∞        | 4517799    | 10.000      |
| Zaleplon        | 4.508 | 1047084  | 291405.1  | 832.6    | 6437244    | 10.000      |
| Zolpidem        | 4.538 | 4102844  | 1812023.0 | 368600.4 | 21850820   | 10.000      |
| Zopiclone       | 4.516 | 352000   | 507.1     | 1572.7   | 1940133    | 10.000      |

NAB

## AM# 26: Screening of THC and Metabolites in Blood and Urine by LC-MS/MS

Extraction Date: 4/22/25

Plate lot#: 250314

Mobile phase A: 10mM Amm Form in LCMS water

Blank Blood Lot: 25A52551

LCMS-QQQ ID: 69679

Analyst: Mikel Buffaloe

Plate Retest Date: 9/14/2025

Mobile phase B: 0.1% Formic acid in MeOH

Blank Urine Lot: 1224

Column: Agilent Phenyl Hexyl (4.6x50mm, 2.7um)

### Pre-Analytic:

- ☒ 1. Check levels of mobile phases and needle wash refill as needed. Ensure waste is not full.
- ☒ 2. Ensure correct column is installed and begin mobile phase flow allow to equilibrate ~ 30 minutes.

### Analytic:

- ☒ 1. Remove standards, plate, controls, and samples from cold storage. Allow to reach room temperature.
- ☒ 2. Using a calibrated pipette, pipette 1000µL blood or 1000µL urine in wells of analytical (standards) plate. **Pipette ID: K52558G**
- ☒ 3. **Urine hydrolysis add 100 ul BG turbo, and 200 ul BG turbo buffer to the urine samples in wells of the analytical plate.**
- ☒ 4. Add **500µL of 0.1% formic acid in water** in the wells of the analytical plate
- ☒ 5. Place on shaking incubator at ambient temp., 900rpm for 15 minutes.
- ☒ 6. Transfer **700-800µL of blood+acid or urine+acid** mixture to corresponding wells of SLE+ plate. Amount transferred: **750 µL**
- ☒ 7. Apply positive pressure for approx. 10-15 seconds (or until no liquid remains on top of sorbent). **(Load at 85-100 PSI- Selector to the right)**
- ☒ 8. Wait 5 minutes.
- ☒ 9. Add **2.25mL MTBE. (Add in 3 increments of 750uL)**
- ☒ 10. Wait 5 minutes.
- ☒ 11. Apply positive pressure for approx. 15 seconds. **(10-15 PSI- Selector to the left).**
- ☒ 12. Add **2.25mL Hexane. (Add in 3 increments of 750uL)**
- ☒ 13. Wait 5 minutes.
- ☒ 14. Apply positive pressure for approx. 15 seconds. **(10-15 PSI- Selector to the left).**
- ☒ 15. Remove plate containing eluate. Place on SPE Dry 75401 and evaporate to dryness at approx. 35°C.
- ☒ 16. Reconstitute in **100µL 100% MeOH** and heat seal plate with foil. Place in autosampler and run worklist.

### Post-Analytic

- ☒ 1. Create batch and process data.
- ☒ 2. Make any necessary integration changes, R<sup>2</sup> values ≥0.98 for each analyte
- ☒ 3. RT +/- 2% or 0.100 min, whichever is greater
- ☒ 4. Confirmation testing on case samples with a response for THC and OH-THC of 3ng/mL or greater and/or Carboxy-THC at 10ng/mL or greater (analyst discretion between 5-10ng/mL) may be pursued.
- ☒ 5. Did all QCs pass for each analyte? (if not, describe in comments section)
- ☒ 6. Central File Packet to include: LIMS Worklist, Method Checklist, Calibration and Control Reports

### COMMENTS:

Case 2025-0499-1 was submitted as a urine kit, but a blood tube was also included in the kit. Both the urine and blood were tested.

MeB

|   | 1                         | 2                          | 3      | 4                | 5                       | 6 |
|---|---------------------------|----------------------------|--------|------------------|-------------------------|---|
| a | cal 1                     | internal control<br>urine  | 0603-1 | 0637-1<br>mixing | 0499-1.2                |   |
| b | cal 2                     | Internal control<br>(high) | 0608-1 | 0638-2           | 0637-1<br>SLE&injection |   |
| c | cal 3                     | negative blood             | 0611-2 | 0660-1           |                         |   |
| d | cal 4                     | 0576-1                     | 0613-1 | 0670-1           |                         |   |
| e | cal 5                     | 0577-1                     | 0615-1 | M2024-4699       |                         |   |
| f | cal 6                     | 0579-1                     | 0631-3 | negative urine   |                         |   |
| g | cal 7                     | 0582-1                     | 0635-1 | 0499-1           |                         |   |
| h | Internal control<br>(low) | 0593-2                     | 0636-1 | 0594-1           |                         |   |

Plate position 3

c2025-\_\_\_\_-\_\_

Web

# AM #26 Cannabinoids Screen Results

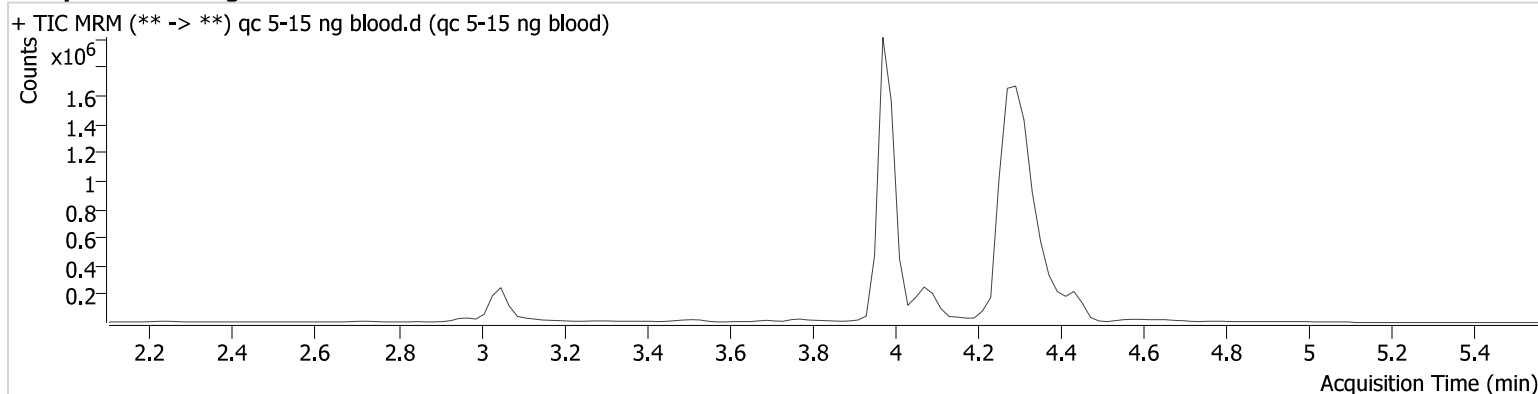
**Batch results** D:\MassHunter\Data\2025\am 25 - 26\042225\QuantResults\am26.batch.bin  
**Calibration Last Update** 4/23/2025 8:21:04 AM

**Instrument** 69679  
**Type** QC  
**Acq. Method** am 26 cann scr 5-5-20.m  
**Sample Position** P3-H1  
**Injection Volume** 5  
**Acq. Date-Time** 4/22/2025 5:02:02 PM  
**Sample Info.**

**Data File** qc 5-15 ng blood.d  
**Sample** qc 5-15 ng blood  
**Operator** Mikel Buffaloe  
**Comment**

Only drugs and concentrations listed on the laboratory report itself are appropriate to be used for interpretation purposes. Any drugs or values included in the notes but not included on the report are used by laboratory personnel to make determinations/reach conclusions within the confines of the methods.

## Sample Chromatogram



| Name     | RT    | Resp.  | ISTD Resp. | Final Conc. |
|----------|-------|--------|------------|-------------|
| THC      | 4.364 | 12445  | 292850     | 5.01 ng/ml  |
| THC-COOH | 4.093 | 116432 | 547499     | 14.56 ng/ml |
| THC-OH   | 3.979 | 39572  | 5036958    | 5.12 ng/ml  |

Web

# AM #26 Cannabinoids Screen Results

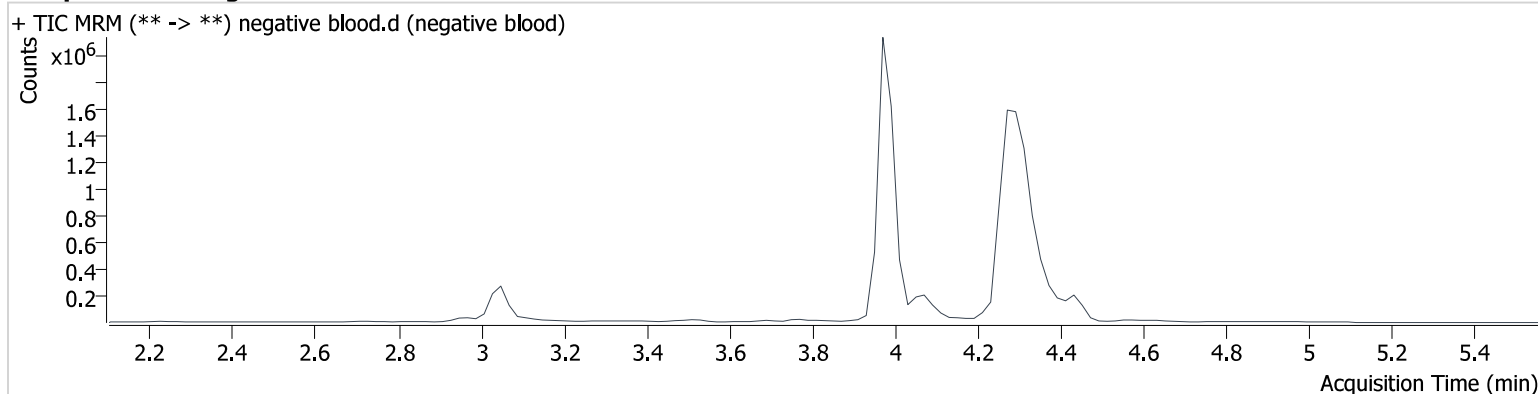
**Batch results** D:\MassHunter\Data\2025\am 25 - 26\042225\QuantResults\am26.batch.bin  
**Calibration Last Update** 4/23/2025 8:21:04 AM

**Instrument** 69679  
**Type** Sample  
**Acq. Method** am 26 cann scr 5-5-20.m  
**Sample Position** P3-C2  
**Injection Volume** 5  
**Acq. Date-Time** 4/22/2025 5:08:30 PM  
**Sample Info.**

**Data File** negative blood.d  
**Sample** negative blood  
**Operator** Mikel Buffaloe  
**Comment**

Only drugs and concentrations listed on the laboratory report itself are appropriate to be used for interpretation purposes. Any drugs or values included in the notes but not included on the report are used by laboratory personnel to make determinations/reach conclusions within the confines of the methods.

## Sample Chromatogram





Web

# AM #26 Cannabinoids Screen Results

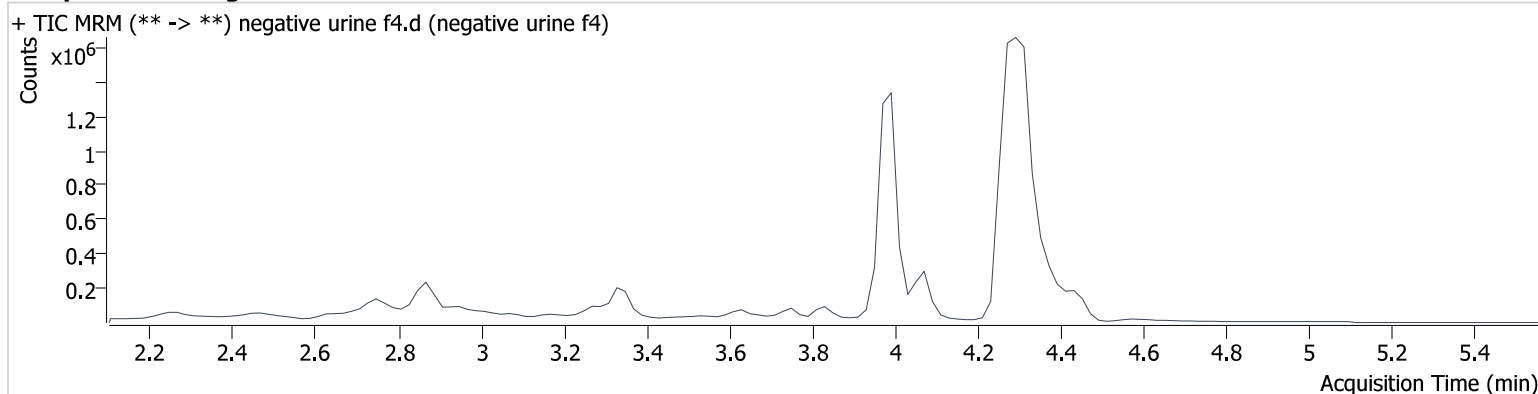
**Batch results** D:\MassHunter\Data\2025\am 25 - 26\042225\QuantResults\am26.batch.bin  
**Calibration Last Update** 4/23/2025 8:21:04 AM

**Instrument** 69679  
**Type** Sample  
**Acq. Method** am 26 cann scr 5-5-20.m  
**Sample Position** P3-F4  
**Injection Volume** 5  
**Acq. Date-Time** 4/22/2025 7:24:38 PM  
**Sample Info.**

**Data File** negative urine f4.d  
**Sample** negative urine f4  
**Operator** Mikel Buffaloe  
**Comment**

Only drugs and concentrations listed on the laboratory report itself are appropriate to be used for interpretation purposes. Any drugs or values included in the notes but not included on the report are used by laboratory personnel to make determinations/reach conclusions within the confines of the methods.

## Sample Chromatogram



Web

# AM #26 Cannabinoids Screen Results

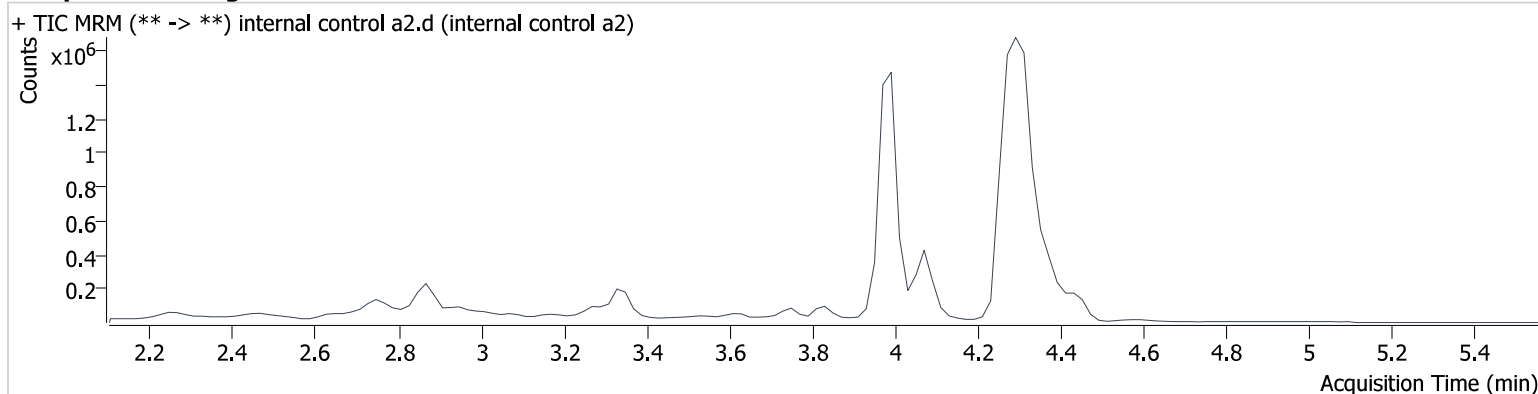
**Batch results** D:\MassHunter\Data\2025\am 25 - 26\042225\QuantResults\am26.batch.bin  
**Calibration Last Update** 4/23/2025 8:21:04 AM

**Instrument** 69679  
**Type** Sample  
**Acq. Method** am 26 cann scr 5-5-20.m  
**Sample Position** P3-A2  
**Injection Volume** 5  
**Acq. Date-Time** 4/22/2025 7:31:05 PM  
**Sample Info.**

**Data File** internal control a2.d  
**Sample** internal control a2  
**Operator** Mikel Buffaloe  
**Comment**

Only drugs and concentrations listed on the laboratory report itself are appropriate to be used for interpretation purposes. Any drugs or values included in the notes but not included on the report are used by laboratory personnel to make determinations/reach conclusions within the confines of the methods.

## Sample Chromatogram



| Name     | RT    | Resp.  | ISTD Resp. | Final Conc. |
|----------|-------|--------|------------|-------------|
| THC      | 4.384 | 18178  | 431771     | 4.97 ng/ml  |
| THC-COOH | 4.073 | 141195 | 727526     | 13.33 ng/ml |
| THC-OH   | 3.999 | 37156  | 4271374    | 5.66 ng/ml  |

Web

# AM #26 Cannabinoids Screen Results

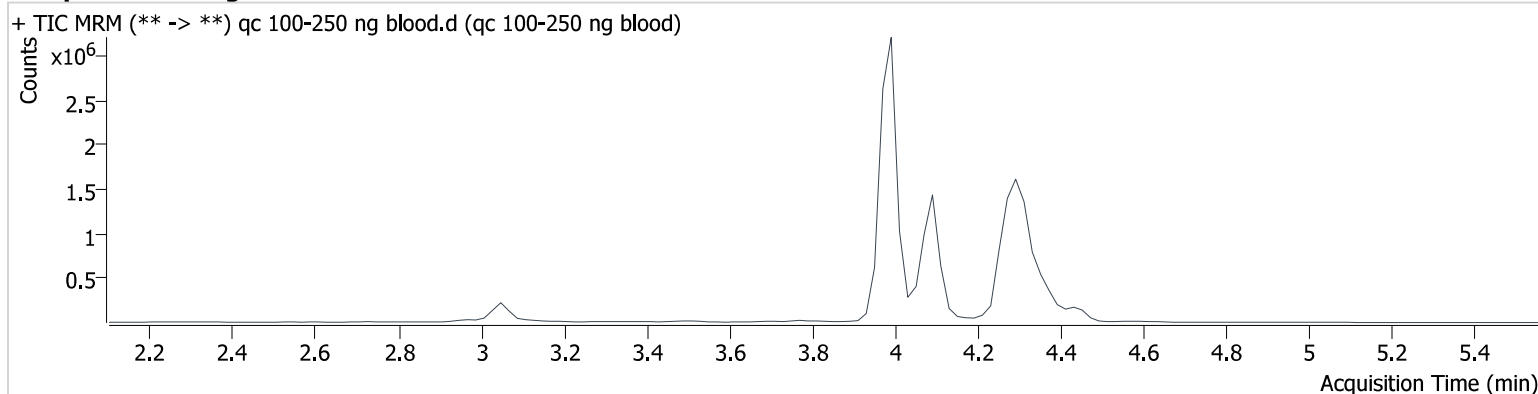
**Batch results** D:\MassHunter\Data\2025\am 25 - 26\042225\QuantResults\am26.batch.bin  
**Calibration Last Update** 4/23/2025 8:21:04 AM

**Instrument** 69679  
**Type** QC  
**Acq. Method** am 26 cann scr 5-5-20.m  
**Sample Position** P3-B2  
**Injection Volume** 5  
**Acq. Date-Time** 4/22/2025 7:50:30 PM  
**Sample Info.**

**Data File** qc 100-250 ng blood.d  
**Sample** qc 100-250 ng blood  
**Operator** Mikel Buffaloe  
**Comment**

Only drugs and concentrations listed on the laboratory report itself are appropriate to be used for interpretation purposes. Any drugs or values included in the notes but not included on the report are used by laboratory personnel to make determinations/reach conclusions within the confines of the methods.

## Sample Chromatogram



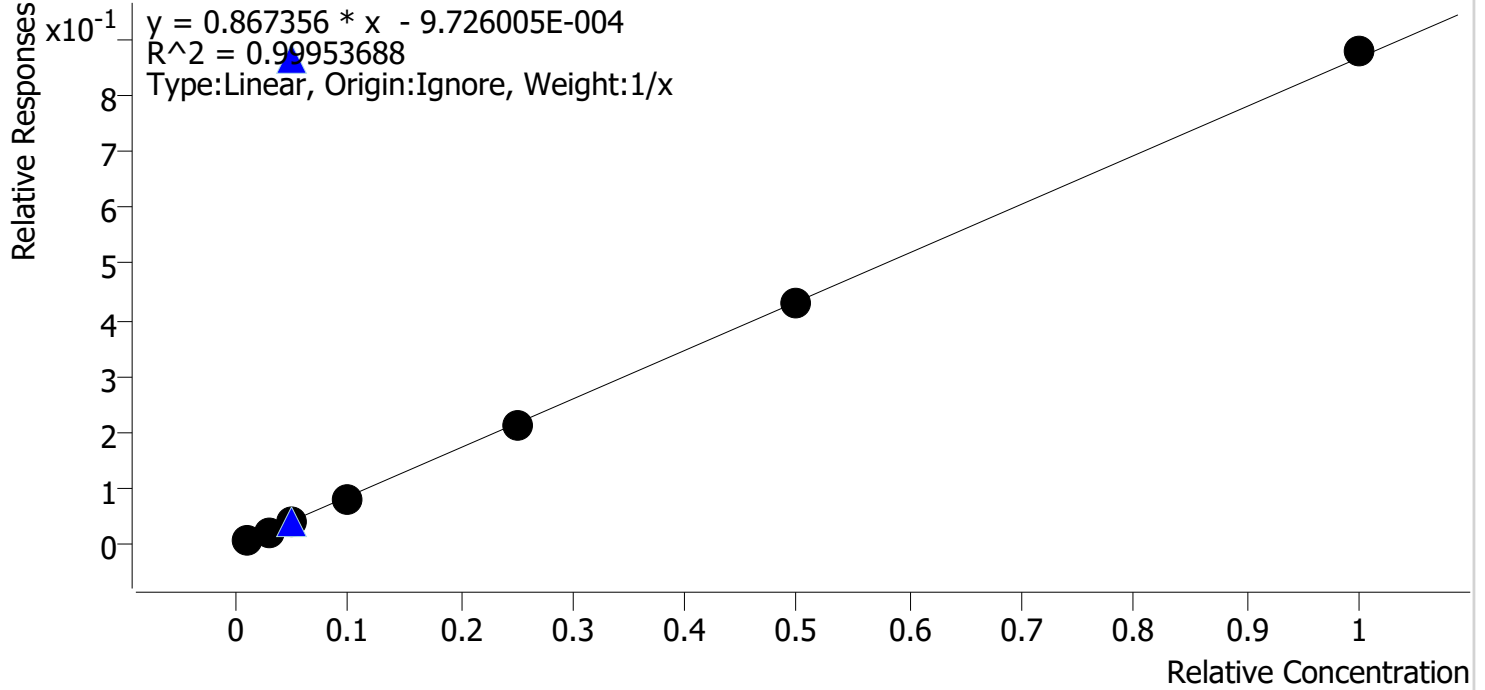
| Name     | RT    | Resp.   | ISTD Resp. | Final Conc.  |
|----------|-------|---------|------------|--------------|
| THC      | 4.384 | 201738  | 233300     | 99.81 ng/ml  |
| THC-COOH | 4.093 | 1532706 | 395160     | 255.67 ng/ml |
| THC-OH   | 3.999 | 583261  | 3792191    | 99.27 ng/ml  |

# Compound Calibration Report

WLB

**Batch results** D:\MassHunter\Data\2025\am 25 - 26\042225\QuantResults\am26.batch.bin  
**Last Cal. Update** 4/23/2025 8:21 AM  
**Analyst Name** ISP\datastor  
**Analyte** THC **Internal Standard** THC-d3

THC - 7 Levels, 7 Levels Used, 7 Points, 7 Points Used, 2 QCs



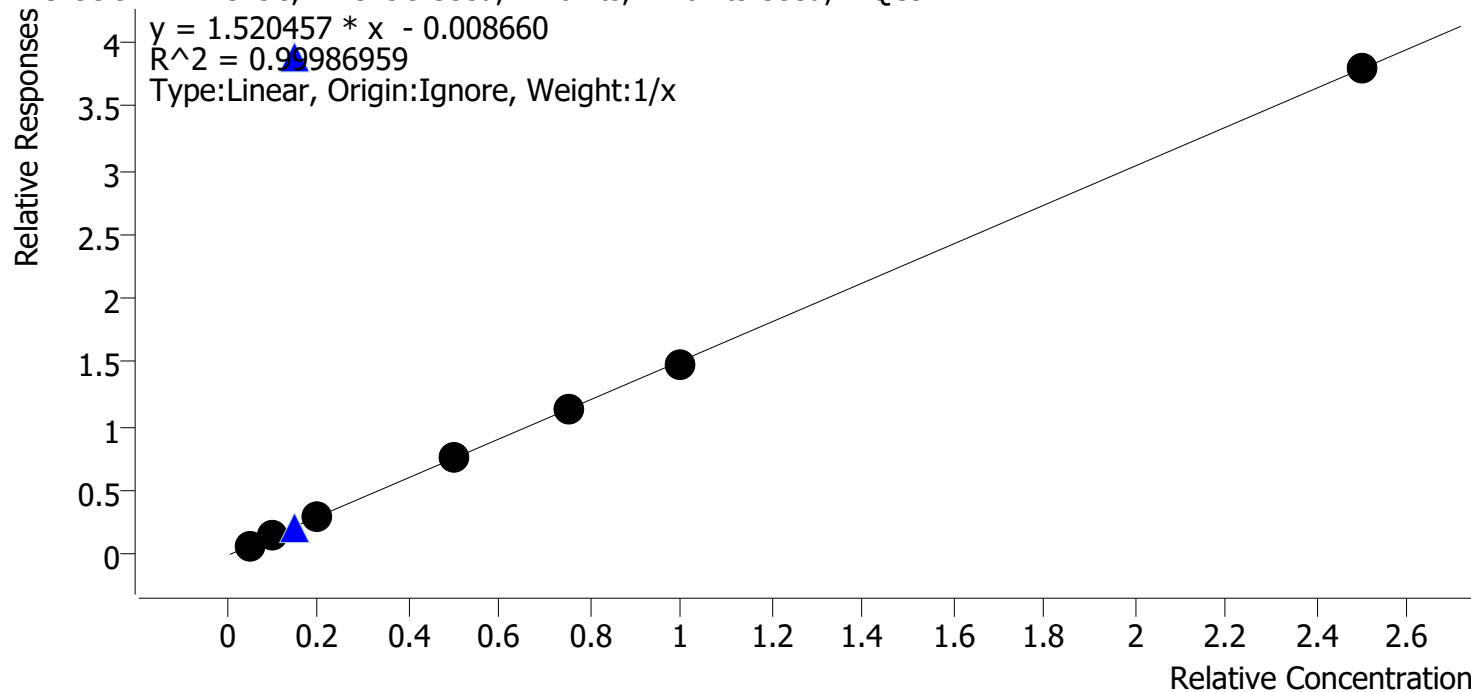
| Sample | Level | Enabled | Expected Concentration | Final Concentration | Accuracy |
|--------|-------|---------|------------------------|---------------------|----------|
| cal 1  | 1     | ✓       | 1.0                    | 1.1                 | 113.9    |
| cal 2  | 2     | ✓       | 3.0                    | 2.9                 | 96.5     |
| cal 3  | 3     | ✓       | 5.0                    | 4.7                 | 93.4     |
| cal 4  | 4     | ✓       | 10.0                   | 9.7                 | 97.2     |
| cal 5  | 5     | ✓       | 25.0                   | 24.6                | 98.4     |
| cal 6  | 6     | ✓       | 50.0                   | 49.7                | 99.4     |
| cal7   | 7     | ✓       | 100.0                  | 101.3               | 101.3    |

# Compound Calibration Report

WAB

**Batch results** D:\MassHunter\Data\2025\am 25 - 26\042225\QuantResults\am26.batch.bin  
**Last Cal. Update** 4/23/2025 8:21 AM  
**Analyst Name** ISP\datastor  
**Analyte** THC-COOH **Internal Standard** THC-COOH-d9

THC-COOH - 7 Levels, 7 Levels Used, 7 Points, 7 Points Used, 2 QCs



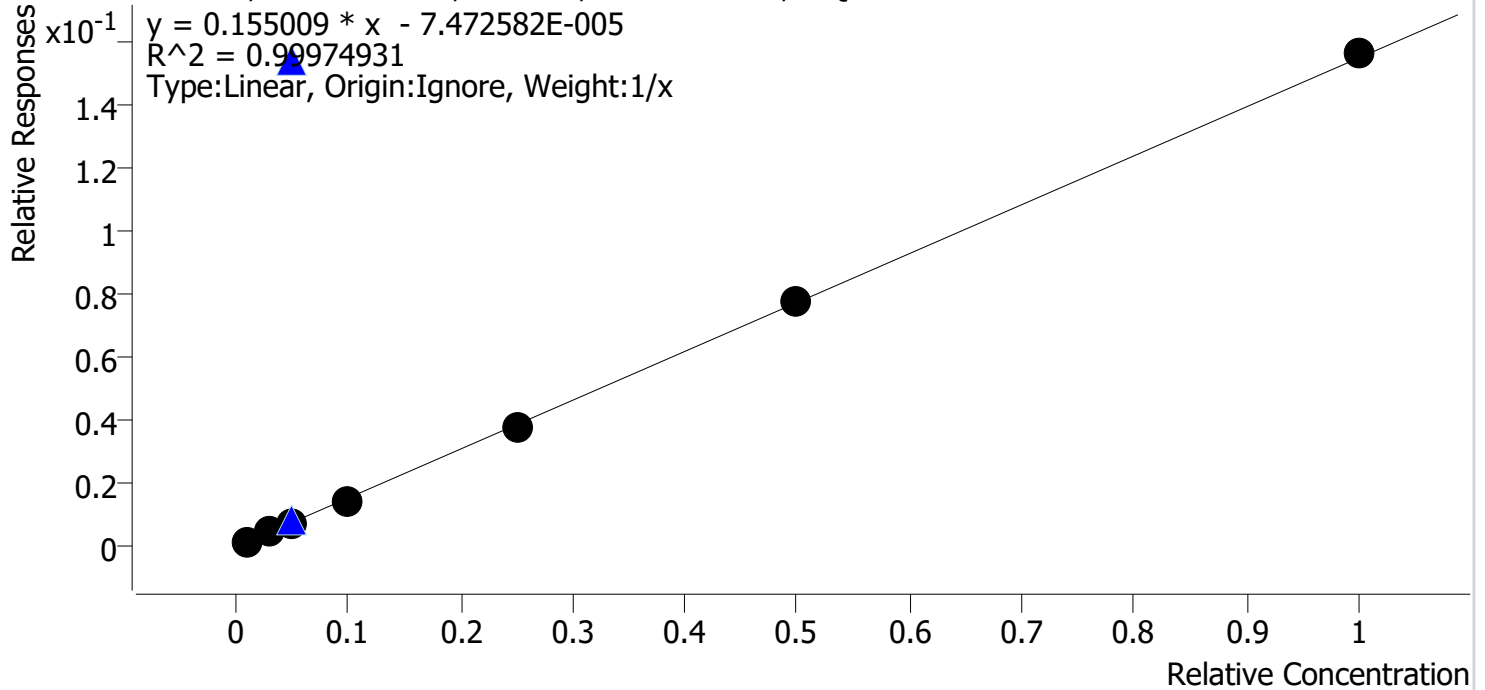
| Sample | Level | Enabled | Expected Concentration | Final Concentration | Accuracy |
|--------|-------|---------|------------------------|---------------------|----------|
| cal 1  | 1     | ✓       | 5.0                    | 5.0                 | 100.9    |
| cal 2  | 2     | ✓       | 10.0                   | 10.0                | 100.4    |
| cal 3  | 3     | ✓       | 20.0                   | 19.7                | 98.3     |
| cal 4  | 4     | ✓       | 50.0                   | 50.3                | 100.7    |
| cal 5  | 5     | ✓       | 75.0                   | 75.9                | 101.2    |
| cal 6  | 6     | ✓       | 100.0                  | 98.3                | 98.3     |
| cal7   | 7     | ✓       | 250.0                  | 250.8               | 100.3    |

# Compound Calibration Report

Web

**Batch results** D:\MassHunter\Data\2025\am 25 - 26\042225\QuantResults\am26.batch.bin  
**Last Cal. Update** 4/23/2025 8:21 AM  
**Analyst Name** ISP\datastor  
**Analyte** THC-OH **Internal Standard** THC-OH-d3

THC-OH - 7 Levels, 7 Levels Used, 7 Points, 7 Points Used, 2 QCs



| Sample | Level | Enabled | Expected Concentration | Final Concentration | Accuracy |
|--------|-------|---------|------------------------|---------------------|----------|
| cal 1  | 1     | ✓       | 1.0                    | 1.1                 | 107.1    |
| cal 2  | 2     | ✓       | 3.0                    | 3.0                 | 100.7    |
| cal 3  | 3     | ✓       | 5.0                    | 4.8                 | 96.9     |
| cal 4  | 4     | ✓       | 10.0                   | 9.6                 | 96.2     |
| cal 5  | 5     | ✓       | 25.0                   | 24.5                | 98.0     |
| cal 6  | 6     | ✓       | 50.0                   | 50.1                | 100.2    |
| cal7   | 7     | ✓       | 100.0                  | 100.9               | 100.9    |

Web

# AM #26 Cannabinoids Screen Results

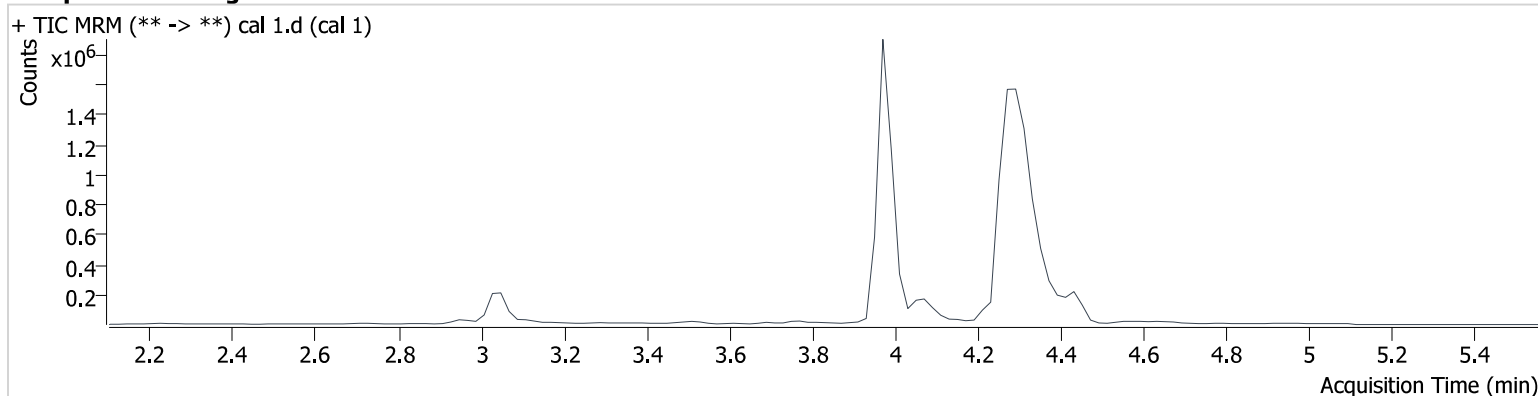
**Batch results** D:\MassHunter\Data\2025\am 25 - 26\042225\QuantResults\am26.batch.bin  
**Calibration Last Update** 4/23/2025 8:21:04 AM

**Instrument** 69679  
**Type** Cal  
**Acq. Method** am 26 cann scr 5-5-20.m  
**Sample Position** P3-A1  
**Injection Volume** 5  
**Acq. Date-Time** 4/22/2025 4:03:37 PM  
**Sample Info.**

**Data File** cal 1.d  
**Sample** cal 1  
**Operator** Mikel Buffaloe  
**Comment**

Only drugs and concentrations listed on the laboratory report itself are appropriate to be used for interpretation purposes. Any drugs or values included in the notes but not included on the report are used by laboratory personnel to make determinations/reach conclusions within the confines of the methods.

## Sample Chromatogram



| Name     | RT    | Resp. | ISTD Resp. | Final Conc.           |
|----------|-------|-------|------------|-----------------------|
| THC      | 4.364 | 2831  | 317974     | 1.14 ng/ml <b>Low</b> |
| THC-COOH | 4.073 | 33222 | 488220     | 5.05 ng/ml <b>Low</b> |
| THC-OH   | 3.979 | 7451  | 4698960    | 1.07 ng/ml <b>Low</b> |

Web

# AM #26 Cannabinoids Screen Results

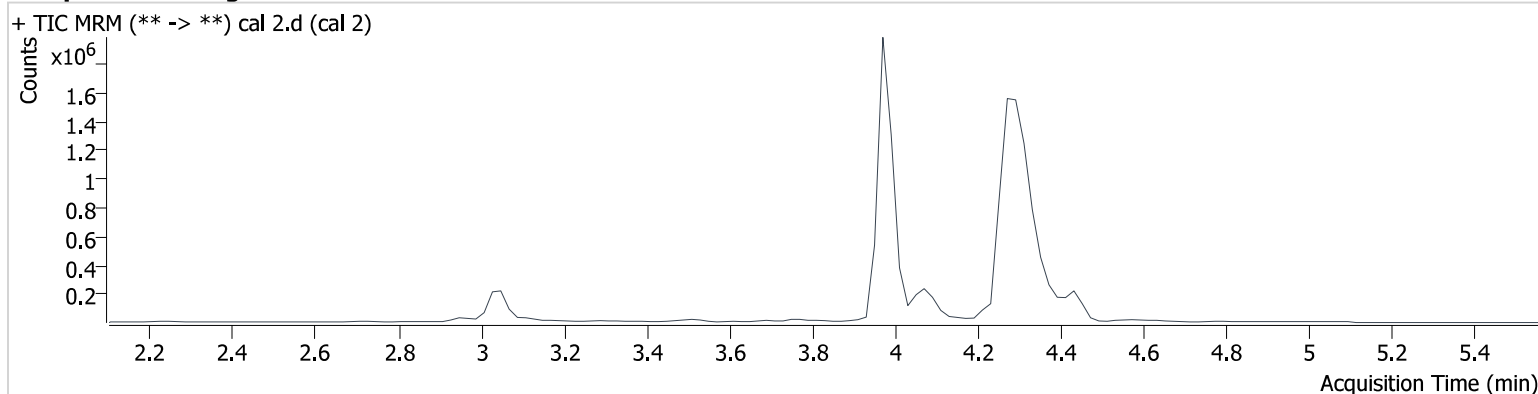
**Batch results** D:\MassHunter\Data\2025\am 25 - 26\042225\QuantResults\am26.batch.bin  
**Calibration Last Update** 4/23/2025 8:21:04 AM

**Instrument** 69679  
**Type** Cal  
**Acq. Method** am 26 cann scr 5-5-20.m  
**Sample Position** P3-B1  
**Injection Volume** 5  
**Acq. Date-Time** 4/22/2025 4:10:14 PM  
**Sample Info.**

**Data File** cal 2.d  
**Sample** cal 2  
**Operator** Mikel Buffaloe  
**Comment**

Only drugs and concentrations listed on the laboratory report itself are appropriate to be used for interpretation purposes. Any drugs or values included in the notes but not included on the report are used by laboratory personnel to make determinations/reach conclusions within the confines of the methods.

## Sample Chromatogram



| Name     | RT    | Resp. | ISTD Resp. | Final Conc.           |
|----------|-------|-------|------------|-----------------------|
| THC      | 4.364 | 6990  | 289678     | 2.89 ng/ml <b>Low</b> |
| THC-COOH | 4.073 | 82410 | 572490     | 10.04 ng/ml           |
| THC-OH   | 3.979 | 22301 | 4839648    | 3.02 ng/ml            |



MB

# AM #26 Cannabinoids Screen Results

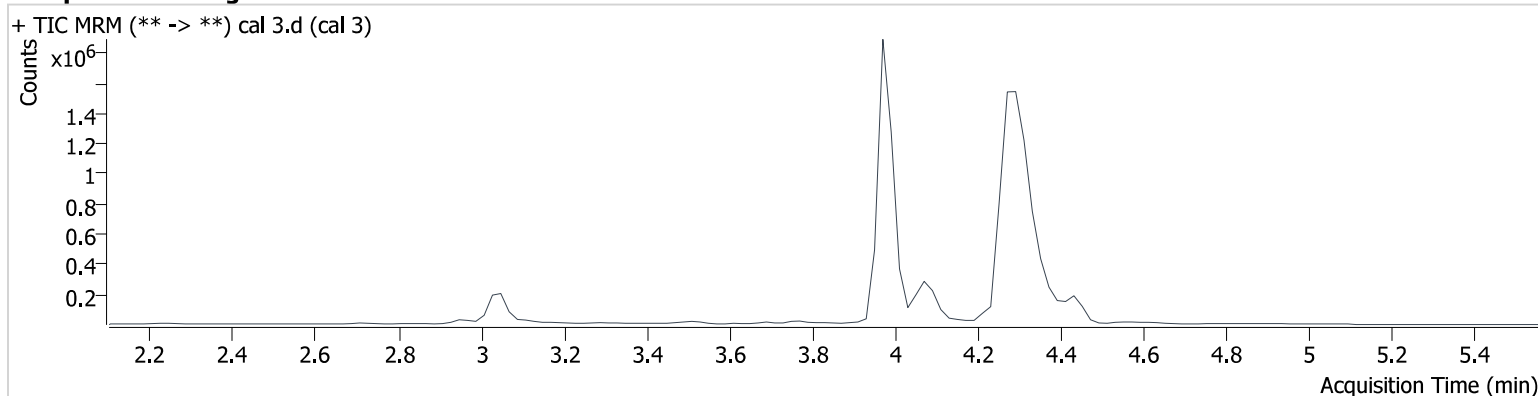
**Batch results** D:\MassHunter\Data\2025\am 25 - 26\042225\QuantResults\am26.batch.bin  
**Calibration Last Update** 4/23/2025 8:21:04 AM

**Instrument** 69679  
**Type** Cal  
**Acq. Method** am 26 cann scr 5-5-20.m  
**Sample Position** P3-C1  
**Injection Volume** 5  
**Acq. Date-Time** 4/22/2025 4:16:43 PM  
**Sample Info.**

**Data File** cal 3.d  
**Sample** cal 3  
**Operator** Mikel Buffaloe  
**Comment**

Only drugs and concentrations listed on the laboratory report itself are appropriate to be used for interpretation purposes. Any drugs or values included in the notes but not included on the report are used by laboratory personnel to make determinations/reach conclusions within the confines of the methods.

## Sample Chromatogram



| Name     | RT    | Resp.  | ISTD Resp. | Final Conc. |
|----------|-------|--------|------------|-------------|
| THC      | 4.364 | 11388  | 287951     | 4.67 ng/ml  |
| THC-COOH | 4.073 | 155808 | 536709     | 19.66 ng/ml |
| THC-OH   | 3.979 | 33551  | 4510587    | 4.85 ng/ml  |

MB

# AM #26 Cannabinoids Screen Results

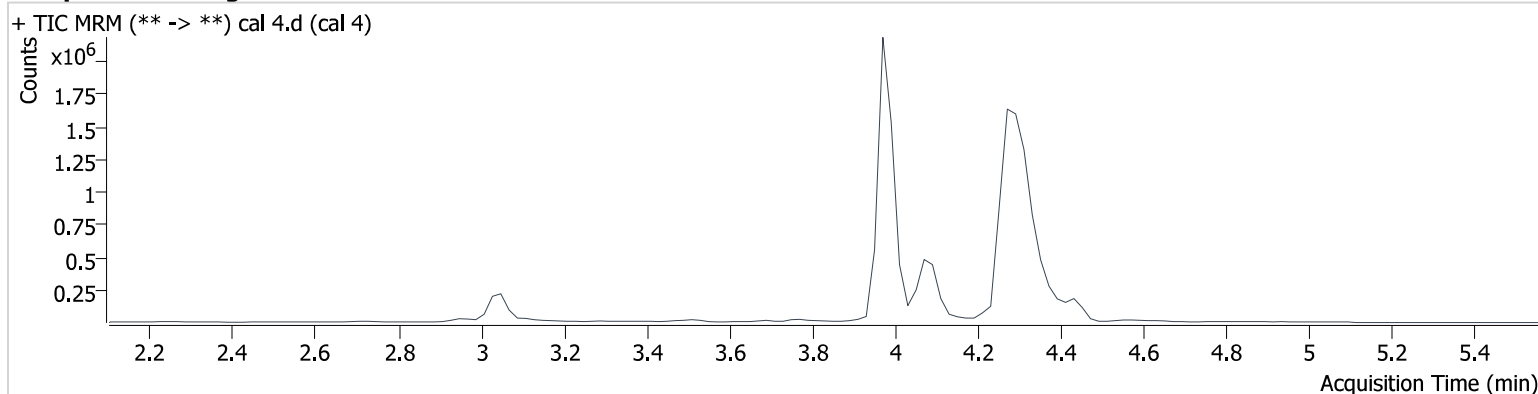
**Batch results** D:\MassHunter\Data\2025\am 25 - 26\042225\QuantResults\am26.batch.bin  
**Calibration Last Update** 4/23/2025 8:21:04 AM

**Instrument** 69679  
**Type** Cal  
**Acq. Method** am 26 cann scr 5-5-20.m  
**Sample Position** P3-D1  
**Injection Volume** 5  
**Acq. Date-Time** 4/22/2025 4:23:10 PM  
**Sample Info.**

**Data File** cal 4.d  
**Sample** cal 4  
**Operator** Mikel Buffaloe  
**Comment**

Only drugs and concentrations listed on the laboratory report itself are appropriate to be used for interpretation purposes. Any drugs or values included in the notes but not included on the report are used by laboratory personnel to make determinations/reach conclusions within the confines of the methods.

## Sample Chromatogram



| Name     | RT    | Resp.  | ISTD Resp. | Final Conc. |
|----------|-------|--------|------------|-------------|
| THC      | 4.364 | 24026  | 288454     | 9.72 ng/ml  |
| THC-COOH | 4.073 | 416821 | 550880     | 50.33 ng/ml |
| THC-OH   | 3.979 | 73556  | 4956410    | 9.62 ng/ml  |

Web

# AM #26 Cannabinoids Screen Results

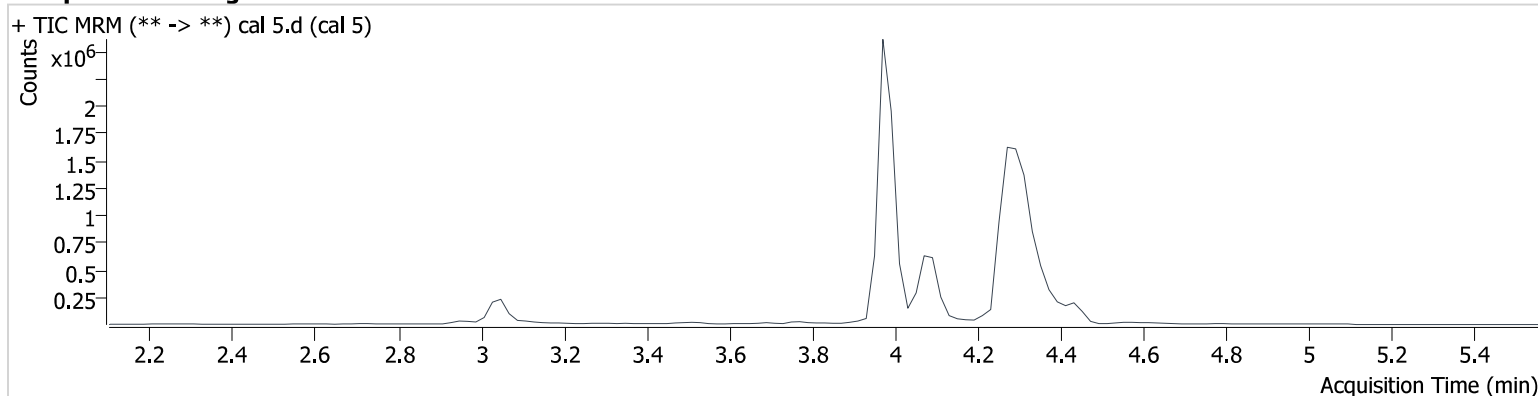
**Batch results** D:\MassHunter\Data\2025\am 25 - 26\042225\QuantResults\am26.batch.bin  
**Calibration Last Update** 4/23/2025 8:21:04 AM

**Instrument** 69679  
**Type** Cal  
**Acq. Method** am 26 cann scr 5-5-20.m  
**Sample Position** P3-E1  
**Injection Volume** 5  
**Acq. Date-Time** 4/22/2025 4:29:38 PM  
**Sample Info.**

**Data File** cal 5.d  
**Sample** cal 5  
**Operator** Mikel Buffaloe  
**Comment**

Only drugs and concentrations listed on the laboratory report itself are appropriate to be used for interpretation purposes. Any drugs or values included in the notes but not included on the report are used by laboratory personnel to make determinations/reach conclusions within the confines of the methods.

## Sample Chromatogram



| Name     | RT    | Resp.  | ISTD Resp. | Final Conc. |
|----------|-------|--------|------------|-------------|
| THC      | 4.364 | 58418  | 275061     | 24.60 ng/ml |
| THC-COOH | 4.093 | 627462 | 548054     | 75.87 ng/ml |
| THC-OH   | 3.979 | 193156 | 5095259    | 24.50 ng/ml |

Web

# AM #26 Cannabinoids Screen Results

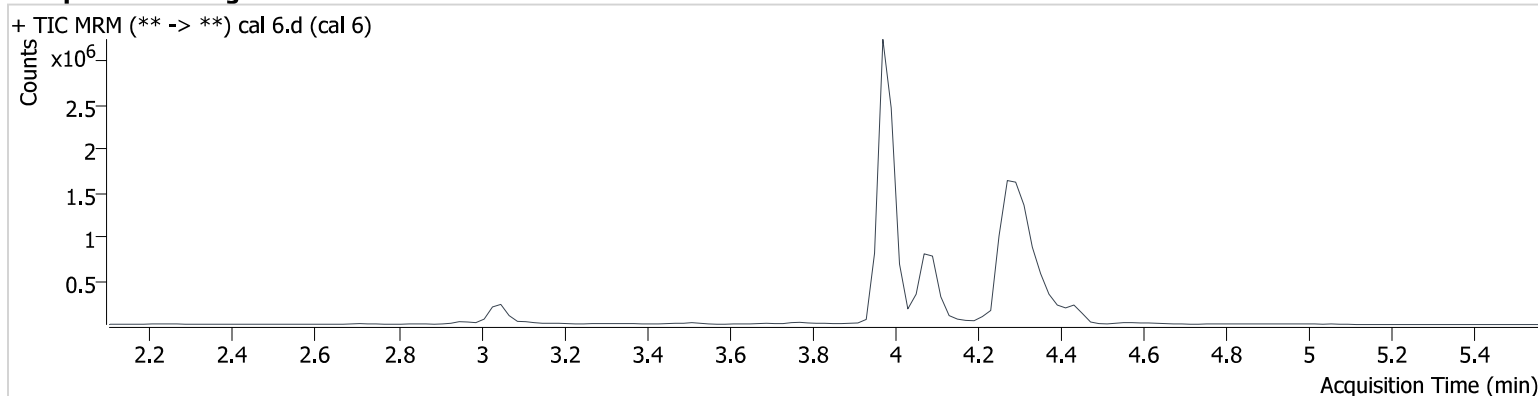
**Batch results** D:\MassHunter\Data\2025\am 25 - 26\042225\QuantResults\am26.batch.bin  
**Calibration Last Update** 4/23/2025 8:21:04 AM

**Instrument** 69679  
**Type** Cal  
**Acq. Method** am 26 cann scr 5-5-20.m  
**Sample Position** P3-F1  
**Injection Volume** 5  
**Acq. Date-Time** 4/22/2025 4:36:07 PM  
**Sample Info.**

**Data File** cal 6.d  
**Sample** cal 6  
**Operator** Mikel Buffaloe  
**Comment**

Only drugs and concentrations listed on the laboratory report itself are appropriate to be used for interpretation purposes. Any drugs or values included in the notes but not included on the report are used by laboratory personnel to make determinations/reach conclusions within the confines of the methods.

## Sample Chromatogram



| Name     | RT    | Resp.  | ISTD Resp. | Final Conc. |
|----------|-------|--------|------------|-------------|
| THC      | 4.364 | 116918 | 271726     | 49.72 ng/ml |
| THC-COOH | 4.073 | 851411 | 573083     | 98.28 ng/ml |
| THC-OH   | 3.979 | 394111 | 5081734    | 50.08 ng/ml |

MB

# AM #26 Cannabinoids Screen Results

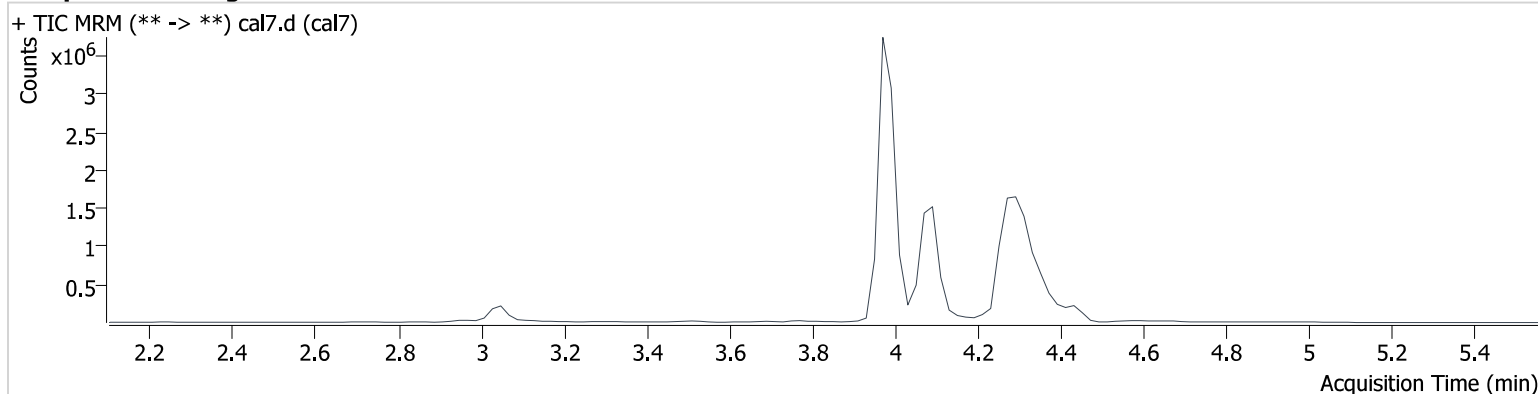
**Batch results** D:\MassHunter\Data\2025\am 25 - 26\042225\QuantResults\am26.batch.bin  
**Calibration Last Update** 4/23/2025 8:21:04 AM

**Instrument** 69679  
**Type** Cal  
**Acq. Method** am 26 cann scr 5-5-20.m  
**Sample Position** P3-G1  
**Injection Volume** 5  
**Acq. Date-Time** 4/22/2025 4:49:05 PM  
**Sample Info.**

**Data File** cal7.d  
**Sample** cal7  
**Operator** Mikel Buffaloe  
**Comment**

Only drugs and concentrations listed on the laboratory report itself are appropriate to be used for interpretation purposes. Any drugs or values included in the notes but not included on the report are used by laboratory personnel to make determinations/reach conclusions within the confines of the methods.

## Sample Chromatogram



| Name     | RT    | Resp.   | ISTD Resp. | Final Conc.  |
|----------|-------|---------|------------|--------------|
| THC      | 4.364 | 235892  | 268874     | 101.26 ng/ml |
| THC-COOH | 4.093 | 1756434 | 461708     | 250.77 ng/ml |
| THC-OH   | 3.979 | 659670  | 4221657    | 100.85 ng/ml |