

IDAHO STATE POLICE PROCEDURE

06.06 SPECIAL WEAPONS AND TACTICS TEAM

A. General

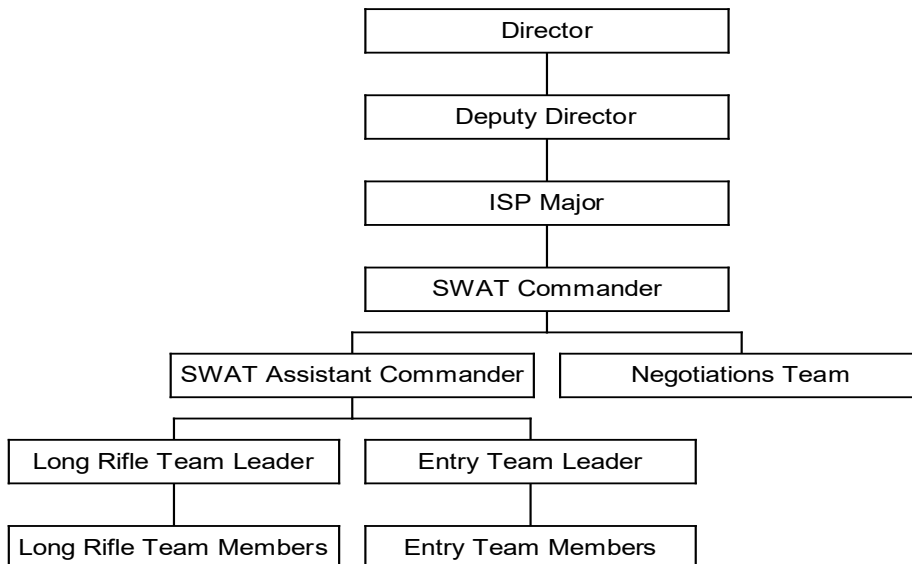
The Special Weapons and Tactics Team (SWAT) provides the Idaho State Police (ISP) the capability to plan and make tactical responses to the following types of critical incidents:

1. hostage, barricade or sniper situations;
2. high risk apprehensions;
3. high risk warrant service;
4. personal protection; and
5. special assignments with a high level of threat.

B. Team Structure

1. The Director appoints the supervising Major and SWAT Commander.
2. The SWAT Commander must be at the rank of Sergeant or above.
3. Assignment to the SWAT is in addition to the trooper's normally assigned duties.

SWAT Command Structure



IDAHO STATE POLICE PROCEDURE

C. Selection and Participation

1. A panel assigned by the Director will recommend members from a roster created through applicant testing and based on the following criteria:
 - a. successful completion of ISP FTO;
 - b. satisfactory job performance, current and historical; and
 - c. satisfactory physical fitness;
 - d. firearms qualification;
 - e. a competency-based test/interview; and
 - f. desire expressed by a written request showing chain of command approval.
2. SWAT candidates must commit to a minimum of two years' service on the team upon selection.
3. All operational team members must maintain acceptable performance standards as outlined in the SWAT training.
4. A team member may be removed from the team by:
 - a. a recommendation of the team leaders and approved by the supervising Major and Director's office; or
 - b. by the appropriate Major if the member's performance of normally assigned duties falls below acceptable standards or causes hardship on the district office.

D. Training and Certification

1. The SWAT trains a minimum of 24 hours every other month.
2. All training is performance oriented and SWAT task specific.
3. Training also includes regular updates on related legal issues such as deadly force, warrant service, 'knock and announce', and hours of service.
4. SWAT members are tested on skills performance as follows:
 - a. minimum performance standards for each individual and team skill are established and maintained by the SWAT Commander in a current task manual;
 - b. each member is tested on individual skills once per year;
 - c. the team is tested on team skills once per year;
 - d. failure to meet minimum standards for individual or team skills results in:
 - a. the member being placed in a temporary, non-deployable status for up to 60 days, pending satisfactorily meeting the minimum standards to individual and team skills;
 - b. immediate focus on remedial training;
 - e. failure to meet minimum standards within the designated 60 days results in immediate removal from the team; and

IDAHO STATE POLICE PROCEDURE

- f. being placed in a temporary, non-deployable status twice within three (3) years results in immediate removal from the team.

E. Operator Levels

1. Upon selection to the SWAT a member will strive to obtain Operator status.
2. Three levels of Operator are identified, to recognize those persons who continue their training, membership and leadership.
 - a. Basic Operator – An entry-level SWAT member who has spent 1 year on the team, and either completed a Basic SWAT course or participated in at least 100 hours of tactical training is recognized as a Basic Operator.
 - b. Senior Operator – A journeyman-level SWAT member who has completed 3 years on the team, participating in operations and training as required is recognized as a Senior Operator.
 - c. Master Operator – An expert-level SWAT member who has completed 6 years on the team, participating in operations and training as required is recognized as a Master Operator.
 - d. Legacy Operator – Any SWAT Master Operator who leaves SWAT voluntarily after serving for 6 or more years is recognized as a Legacy Operator, and wears the SWAT uniform pin for the remainder of the trooper's career.
 - e. Each level is identified by a uniform pin, worn on the Class A uniform, centered over the right shirt pocket, ½ inch above the nameplate or other ribbons as appropriate.



Basic



Senior



Master

F. Uniforms and Equipment

ISP supplies SWAT members with equipment appropriate to reduce the risk of injury or death to all persons involved during the performance of a SWAT operation.

1. SWAT members wear appropriate utility uniforms and footwear:
 - a. must be an approved color/pattern, and
 - b. clearly identify the wearer as a state trooper.
2. SWAT members are responsible for the care and maintenance of all issued equipment.

IDAHO STATE POLICE PROCEDURE

3. The SWAT Commander ensures that only those team members properly trained in the use of special equipment use such equipment.
4. The SWAT Commander must approve and justify all non-standard items used during SWAT operations.

G. Activation

1. All internal requests for SWAT activation must follow ISP procedure [06.14 Operation Planning, Threat Assessment/Risk Mitigation Process](#).
2. The team is activated as follows:
 - a. the district Captain, Lieutenant or a local agency requests the SWAT Commander to activate;
 - b. the SWAT Commander evaluates the situation to determine if activation is warranted;
 - c. the SWAT Commander contacts the Major for approval of the activation; and
 - d. upon approval, the Major notifies the Director's Office and all District Commanders.
 - e. The district commander notifies the Lieutenants when the activation occurs in their district.
3. SWAT activation takes precedence over most other assignments within the ISP. Team members are required to notify the SWAT Commander immediately of any work related conflicts that may interfere with an activation (court, special assignments, EP, etc.)
4. Once activated, team members are under the command of the SWAT Commander until the commander ends the activation.
5. SWAT members perform only tasks for which they have trained and only in the manner they were trained to perform the tasks.
6. The SWAT Commander terminates SWAT participation or reassigns if he or she believes the team does not have sufficient support from the other agencies involved to bring the situation to a safe and responsible conclusion.
7. The SWAT Commander immediately notifies the Major of the decision.

I. During Operations

1. Command and control during an operation:
 - a. the SWAT Commander reports directly to the Incident Commander (IC) or the on-scene supervisor;
 - b. the IC or supervisor determines when and if the SWAT is used;
 - c. the SWAT Commander solely determines deployment of the SWAT, tactical decision-making, and tactical resolution of the incident.

IDAHO STATE POLICE PROCEDURE

2. A radio operations log is maintained by dispatch during all SWAT operations.
3. The SWAT develops and uses a written plan for all proactive or anticipatory operations, such as raids. The plan includes:
 - a. how the operation is to be conducted;
 - b. command, control, and communications;
 - c. required support; and
 - d. the rules of engagement.
 - e. event deconfliction
4. District Investigations detectives are placed on standby to ensure a quick response to the scene by an investigative team in the event of an officer-involved critical incident:
 - a. to protect and secure all ISP personnel;
 - b. to secure the crime scene;
 - c. to protect and secure all evidence;
 - d. to secure all witnesses; and
 - e. to coordinate all investigative efforts with local law enforcement.

J. After Action Critique and Reporting

1. At the completion of all operations and significant training events the SWAT Commander conducts an after-incident review to give team members a forum for offering information to improve the performance of the team. The review is conducted according to ISP procedure [02.01 After Incident Reviews](#).
2. The SWAT Commander or designee writes an incident report detailing:
 - a. activation of the team;
 - b. events of the operation; and
 - c. any pertinent information required for follow-up investigators, prosecutors, or other purposes.
3. The SWAT Commander forwards the incident report to the supervising Major and Directors Office.
4. The Major maintains all incident reports in a file system retrievable by date in accordance with ISP procedure [02.07 Records Management](#).